

Product Datasheet

Goat F(ab')₂ anti-Rabbit IgG (H+L) Secondary Antibody [FITC] (Pre-adsorbed) NB120-6009

Unit Size: 0.25 mg

Store at 4C short term. Aliquot and store at -20C long term. Avoid freeze-thaw cycles.

www.novusbio.com



technical@novusbio.com

Protocols, Publications, Related Products, Reviews, Research Tools and Images at:
www.novusbio.com/NB120-6009

Updated 10/23/2024 v.20.1

Earn rewards for product
reviews and publications.

Submit a publication at www.novusbio.com/publications

Submit a review at www.novusbio.com/reviews/destination/NB120-6009



NB120-6009Goat F(ab')₂ anti-Rabbit IgG (H+L) Secondary Antibody [FITC] (Pre-adsorbed)

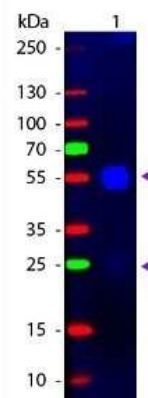
| Product Information | |
|---------------------|--|
| Unit Size | 0.25 mg |
| Concentration | Please see the vial label for concentration. If unlisted please contact technical services. |
| Storage | Store at 4C short term. Aliquot and store at -20C long term. Avoid freeze-thaw cycles. |
| Clonality | Polyclonal |
| Preservative | 0.01% Sodium Azide |
| Isotype | IgG |
| Conjugate | FITC |
| Purity | Multi-step |
| Buffer | 0.02 M Potassium Phosphate, 0.15 M Sodium Chloride, pH 7.2, 10 mg/mL Bovine Serum Albumin (BSA) - Immunoglobulin and Protease free |

| Product Description | |
|-------------------------|---|
| Description | <p>For extended storage aliquot contents and freeze at -20C or below. Avoid cycles of freezing and thawing. Centrifuge product if not completely clear after standing at room</p> <p>This product was prepared from monospecific antiserum by immunoaffinity chromatography using Rabbit IgG coupled to agarose beads followed by solid phase adsorption(s) to remove any unwanted reactivities, pepsin digestion and chromatographic separation. Assay by immunoelectrophoresis resulted in a single precipitin arc against anti-Fluorescein, anti-Goat Serum, Rabbit IgG and Rabbit Serum</p> |
| Host | Goat |
| Species | Rabbit |
| Specificity/Sensitivity | No reaction was observed against anti-Pepsin, anti-Goat IgG F(c) or Bovine, Chicken, Goat, Guinea Pig, Hamster, Horse, Human, Mouse, Rat and Sheep Serum Proteins. |
| Immunogen | Rabbit IgG whole molecule |

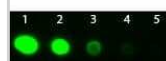
| Product Application Details | |
|-----------------------------|--|
| Applications | Western Blot, Dot Blot, Fluorophore-linked immunosorbent assay, Flow Cytometry, Immunocytochemistry/ Immunofluorescence |
| Recommended Dilutions | Western Blot 1:1000 - 1:10000, Flow Cytometry 1:500-1:2500, Immunocytochemistry/ Immunofluorescence 1:1000 - 1:5000, Dot Blot, Fluorophore-linked immunosorbent assay 1:10000 - 1:50000 |
| Application Notes | This product has been tested by dot blot and western blot and is designed for immunofluorescence microscopy, fluorescence based plate assays (FLISA) and fluorescent western blotting. This product is also suitable for multiplex analysis, including multicolor imaging, utilizing various commercial platforms requiring extremely low background levels, absence of F(c) mediated binding, lot-to-lot consistency, high titer and specificity. |

Images

Western Blot: Goat F(ab')₂ anti-Rabbit IgG (H+L) Secondary Antibody [FITC] (Pre-adsorbed) [NB120-6009] - Western blot of Goat F(ab')₂ anti-Rabbit IgG (H+L) Secondary Antibody [FITC] (Pre-adsorbed). Lane 1: Rabbit IgG. Lane 2: None. Load: 50 ng per lane. Primary antibody: None. Secondary antibody: Goat F(ab')₂ anti-Rabbit IgG (H+L) Secondary Antibody [FITC] (Pre-adsorbed) at 1:1000 for 60 min at RT. Blocking: Fluorescent blocking buffer for 30 min at RT. Predicted/Observed size: 25 & 55 kDa, 25 & 55 kDa for Rabbit IgG. Other band(s): None.



Dot Blot: Goat F(ab')₂ anti-Rabbit IgG (H+L) Secondary Antibody [FITC] (Pre-adsorbed) [NB120-6009]





Novus Biologicals USA

10730 E. Briarwood Avenue
Centennial, CO 80112
USA
Phone: 303.730.1950
Toll Free: 1.888.506.6887
Fax: 303.730.1966
nb-customerservice@bio-techne.com

Bio-Techne Canada

21 Canmotor Ave
Toronto, ON M8Z 4E6
Canada
Phone: 905.827.6400
Toll Free: 855.668.8722
Fax: 905.827.6402
canada.inquires@bio-techne.com

Bio-Techne Ltd

19 Barton Lane
Abingdon Science Park
Abingdon, OX14 3NB, United Kingdom
Phone: (44) (0) 1235 529449
Free Phone: 0800 37 34 15
Fax: (44) (0) 1235 533420
info.EMEA@bio-techne.com

General Contact Information

www.novusbio.com
Technical Support: nb-technical@bio-
techne.com
Orders: nb-customerservice@bio-techne.com
General: novus@novusbio.com

Limitations

This product is for research use only and is not approved for use in humans or in clinical diagnosis. Secondary Antibodies are guaranteed for 1 year from date of receipt.

For more information on our 100% guarantee, please visit www.novusbio.com/guarantee

Earn gift cards/discounts by submitting a review: www.novusbio.com/reviews/submit/NB120-6009

Earn gift cards/discounts by submitting a publication using this product:
www.novusbio.com/publications

