

Product Datasheet

RanBP2 Antibody NB120-2938

Unit Size: 100ug

Store at -20C. Avoid freeze-thaw cycles.

www.novusbio.com



technical@novusbio.com

Publications: 2

Protocols, Publications, Related Products, Reviews, Research Tools and Images at:
www.novusbio.com/NB120-2938

Updated 9/9/2025 v.20.1

Earn rewards for product
reviews and publications.

Submit a publication at www.novusbio.com/publications

Submit a review at www.novusbio.com/reviews/destination/NB120-2938



NB120-2938

RanBP2 Antibody

Product Information	
Unit Size	100ug
Concentration	1 mg/ml
Storage	Store at -20C. Avoid freeze-thaw cycles.
Clonality	Polyclonal
Preservative	0.05% Sodium Azide
Isotype	IgG
Purity	Immunogen affinity purified
Buffer	PBS with 1 mg/ml BSA

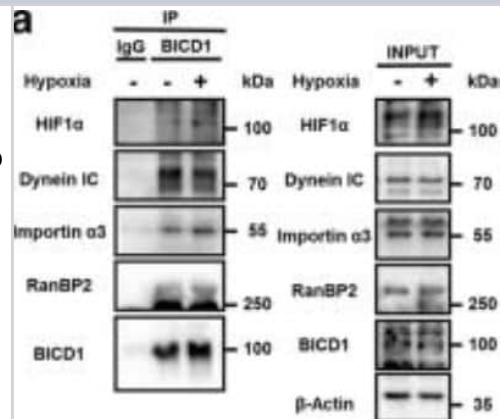
Product Description	
Description	Novus Biologicals Rabbit RanBP2 Antibody (NB120-2938) is a polyclonal antibody validated for use in IHC and WB. Anti-RanBP2 Antibody: Cited in 2 publications. All Novus Biologicals antibodies are covered by our 100% guarantee.
Host	Rabbit
Gene ID	5903
Gene Symbol	RANBP2
Species	Human, Mouse, Bovine
Immunogen	Synthetic peptide corresponding to residues M(1) R R S K A D V E R Y I A S V Q G S(18) of human RanBP2.

Product Application Details	
Applications	Western Blot, Immunohistochemistry-Paraffin, Immunohistochemistry
Recommended Dilutions	Western Blot 1 ug/ml, Immunohistochemistry 10 ug/ml, Immunohistochemistry-Paraffin 1:10 - 1:500

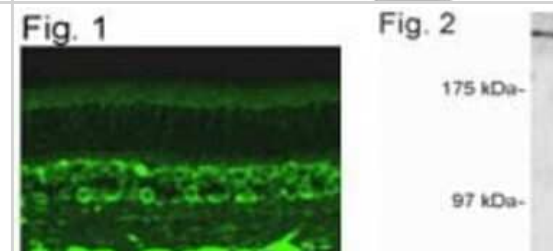


Images

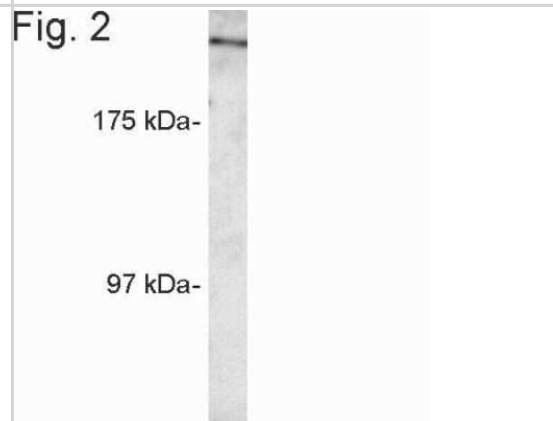
Western Blot: RanBP2 Antibody [NB120-2938] - Effect of hypoxia on the interaction between HIF1alpha and BICD1. Co-immunoprecipitation of HIF1alpha, Dynein IC, Importin alpha3, RanBP2 with IgG and BICD1 antibodies were shown in left panel. Total protein expressions in lysate were shown in right panel. n = 3. Image collected and cropped by CiteAb from the following publication (<https://www.nature.com/articles/s41418-018-0241-1>) licensed under a CC-BY license.



Immunohistochemistry: RanBP2 Antibody [NB120-2938] - Figure 1 illustrates immunohistochemical staining of RanBP2 in bovine retina using NB120-2938. Figure 2 illustrates Western blot detection of RanBP2 from human retinal extracts using NB120-2938.



Western Blot: RanBP2 Antibody [NB120-2938] - Analysis of human retinal extracts.



Publications

Lee HJ, Jung YH, Oh JY et al. BICD1 mediates HIF1a nuclear translocation in mesenchymal stem cells during hypoxia adaptation. *Cell Death Differ.* 2018-11-21 [PMID: 30464225] (WB, Human)

Hamard PJ, Boyer-Guittaut M, Camuzeaux B et al. Sumoylation delays the ATF7 transcription factor subcellular localization and inhibits its transcriptional activity. *Nucleic Acids Res.* 2007-01-01 [PMID: 17264123]



Novus Biologicals USA

10730 E. Briarwood Avenue
Centennial, CO 80112
USA
Phone: 303.730.1950
Toll Free: 1.888.506.6887
Fax: 303.730.1966
nb-customerservice@bio-techne.com

Bio-Techne Canada

21 Canmotor Ave
Toronto, ON M8Z 4E6
Canada
Phone: 905.827.6400
Toll Free: 855.668.8722
Fax: 905.827.6402
canada.inquires@bio-techne.com

Bio-Techne Ltd

19 Barton Lane
Abingdon Science Park
Abingdon, OX14 3NB, United Kingdom
Phone: (44) (0) 1235 529449
Free Phone: 0800 37 34 15
Fax: (44) (0) 1235 533420
info.EMEA@bio-techne.com

General Contact Information

www.novusbio.com
Technical Support: nb-technical@bio-techne.com
Orders: nb-customerservice@bio-techne.com
General: novus@novusbio.com

Products Related to NB120-2938

NBP2-33376H	Blue Marker Antibody (6F4-F6) [HRP]
HAF008	Goat anti-Rabbit IgG Secondary Antibody [HRP]
NB7160	Goat anti-Rabbit IgG (H+L) Secondary Antibody [HRP]
NBP2-24891	Rabbit IgG Isotype Control

Limitations

This product is for research use only and is not approved for use in humans or in clinical diagnosis. Primary Antibodies are guaranteed for 1 year from date of receipt.

For more information on our 100% guarantee, please visit www.novusbio.com/guarantee

Earn gift cards/discounts by submitting a review: www.novusbio.com/reviews/submit/NB120-2938

Earn gift cards/discounts by submitting a publication using this product:
www.novusbio.com/publications

