

# Product Datasheet

## alpha COP I Antibody NB120-2913

Unit Size: 100ug

Store at -20C. Avoid freeze-thaw cycles.

[www.novusbio.com](http://www.novusbio.com)



[technical@novusbio.com](mailto:technical@novusbio.com)

Protocols, Publications, Related Products, Reviews, Research Tools and Images at:  
[www.novusbio.com/NB120-2913](http://www.novusbio.com/NB120-2913)

Updated 9/9/2025 v.20.1

Earn rewards for product  
reviews and publications.

Submit a publication at [www.novusbio.com/publications](http://www.novusbio.com/publications)

Submit a review at [www.novusbio.com/reviews/destination/NB120-2913](http://www.novusbio.com/reviews/destination/NB120-2913)



**NB120-2913**

alpha COP I Antibody

**Product Information**

<b>Unit Size</b>	100ug
<b>Concentration</b>	1 mg/ml
<b>Storage</b>	Store at -20C. Avoid freeze-thaw cycles.
<b>Clonality</b>	Polyclonal
<b>Preservative</b>	0.05% Sodium Azide
<b>Isotype</b>	IgG
<b>Purity</b>	Immunogen affinity purified
<b>Buffer</b>	PBS with 1 mg/ml BSA
<b>Target Molecular Weight</b>	138 kDa

**Product Description**

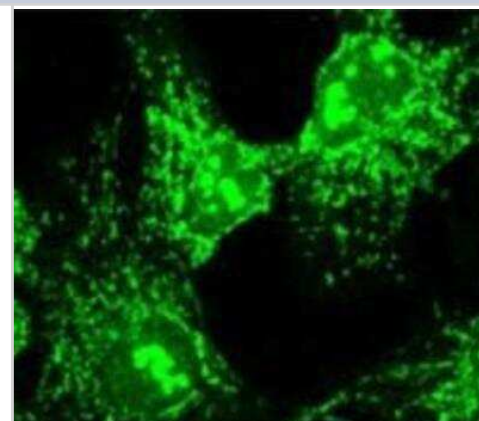
<b>Description</b>	Novus Biologicals Rabbit alpha COP I Antibody (NB120-2913) is a polyclonal antibody validated for use in WB and ICC/IF. All Novus Biologicals antibodies are covered by our 100% guarantee.
<b>Host</b>	Rabbit
<b>Gene ID</b>	1314
<b>Gene Symbol</b>	COPA
<b>Species</b>	Human, Rat
<b>Specificity/Sensitivity</b>	Detects coatamer-protein I alpha (COP I alpha).
<b>Immunogen</b>	Synthetic peptide corresponding to residues M(1) L T K F E T K S A R V K G L S F H P(19) C of rat alpha-COP.

**Product Application Details**

<b>Applications</b>	Western Blot, Immunocytochemistry/ Immunofluorescence
<b>Recommended Dilutions</b>	Western Blot 1 ug/ml, Immunocytochemistry/ Immunofluorescence 3 ug/ml
<b>Application Notes</b>	WB: Detects an approx. 140 kDa protein representing COPI alpha from PC-12 cell extract. Also detects an unidentified protein at approx. 100 kDa. ICC: Staining of alpha COP I results in alpha COP localization to the Golgi complex and to distinct vesicular structures scattered throughout the cytoplasm.

**Images**

Immunocytochemistry/Immunofluorescence: alpha COP I Antibody [NB120-2913] - HeLa cells.





### **Novus Biologicals USA**

10730 E. Briarwood Avenue  
Centennial, CO 80112  
USA  
Phone: 303.730.1950  
Toll Free: 1.888.506.6887  
Fax: 303.730.1966  
nb-customerservice@bio-techne.com

### **Bio-Techne Canada**

21 Canmotor Ave  
Toronto, ON M8Z 4E6  
Canada  
Phone: 905.827.6400  
Toll Free: 855.668.8722  
Fax: 905.827.6402  
canada.inquires@bio-techne.com

### **Bio-Techne Ltd**

19 Barton Lane  
Abingdon Science Park  
Abingdon, OX14 3NB, United Kingdom  
Phone: (44) (0) 1235 529449  
Free Phone: 0800 37 34 15  
Fax: (44) (0) 1235 533420  
info.EMEA@bio-techne.com

### **General Contact Information**

www.novusbio.com  
Technical Support: nb-technical@bio-techne.com  
Orders: nb-customerservice@bio-techne.com  
General: novus@novusbio.com

### **Products Related to NB120-2913**

---

HAF008	Goat anti-Rabbit IgG Secondary Antibody [HRP]
NB7160	Goat anti-Rabbit IgG (H+L) Secondary Antibody [HRP]
NBP2-24891	Rabbit IgG Isotype Control
H00001314-Q01-10ug	Recombinant Human alpha COP I GST (N-Term) Protein

---

### **Limitations**

This product is for research use only and is not approved for use in humans or in clinical diagnosis. Primary Antibodies are guaranteed for 1 year from date of receipt.

For more information on our 100% guarantee, please visit [www.novusbio.com/guarantee](http://www.novusbio.com/guarantee)

Earn gift cards/discounts by submitting a review: [www.novusbio.com/reviews/submit/NB120-2913](http://www.novusbio.com/reviews/submit/NB120-2913)

Earn gift cards/discounts by submitting a publication using this product:  
[www.novusbio.com/publications](http://www.novusbio.com/publications)

