

# Product Datasheet

## SLC8A3/NCX3 Antibody (C2C12)

### NB120-2869

Unit Size: 100 uL

Store at -20C. Avoid freeze-thaw cycles.

[www.novusbio.com](http://www.novusbio.com)



[technical@novusbio.com](mailto:technical@novusbio.com)

#### Publications: 4

Protocols, Publications, Related Products, Reviews, Research Tools and Images at:  
[www.novusbio.com/NB120-2869](http://www.novusbio.com/NB120-2869)

Updated 9/9/2025 v.20.1

Earn rewards for product  
reviews and publications.

Submit a publication at [www.novusbio.com/publications](http://www.novusbio.com/publications)

Submit a review at [www.novusbio.com/reviews/destination/NB120-2869](http://www.novusbio.com/reviews/destination/NB120-2869)

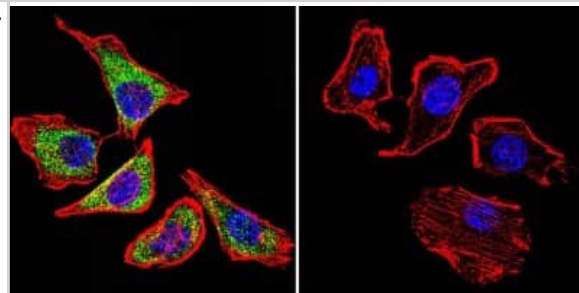


**NB120-2869****SLC8A3/NCX3 Antibody (C2C12)**

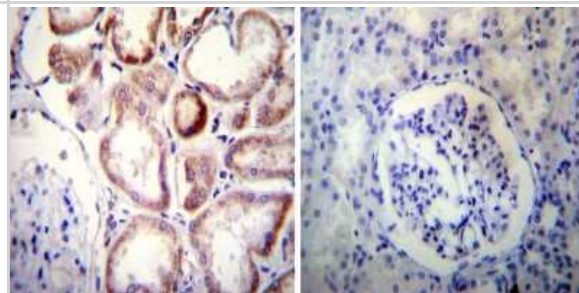
<b>Product Information</b>	
<b>Unit Size</b>	100 uL
<b>Concentration</b>	1 mg/ml
<b>Storage</b>	Store at -20C. Avoid freeze-thaw cycles.
<b>Clonality</b>	Monoclonal
<b>Clone</b>	C2C12
<b>Preservative</b>	0.05% Sodium Azide
<b>Isotype</b>	IgM
<b>Purity</b>	Affinity purified
<b>Buffer</b>	PBS +BSA(1mg/ml)
<b>Product Description</b>	
<b>Description</b>	Novus Biologicals Mouse SLC8A3/NCX3 Antibody (C2C12) (NB120-2869) is a monoclonal antibody validated for use in IHC, WB, Flow, ICC/IF and IP. Anti-SLC8A3/NCX3 Antibody: Cited in 3 publications. All Novus Biologicals antibodies are covered by our 100% guarantee.
<b>Host</b>	Mouse
<b>Gene ID</b>	6547
<b>Gene Symbol</b>	SLC8A3
<b>Species</b>	Human, Mouse, Rat, Porcine, Bovine, Canine, Guinea Pig, Insect, Kangaroo, Rabbit
<b>Reactivity Notes</b>	Please note that this antibody is reactive to Mouse and derived from the same host, Mouse. Additional Mouse on Mouse blocking steps may be required for IHC and ICC experiments. Please contact Technical Support for more information
<b>Immunogen</b>	Purified canine cardiac sodium/calcium exchanger.
<b>Product Application Details</b>	
<b>Applications</b>	Western Blot, Immunohistochemistry-Paraffin, Flow Cytometry, Immunocytochemistry/ Immunofluorescence, Immunohistochemistry, Immunohistochemistry-Frozen, Immunoprecipitation
<b>Recommended Dilutions</b>	Western Blot 1:1000, Flow Cytometry 1:100, Immunohistochemistry 1:20 - 1:50, Immunocytochemistry/ Immunofluorescence 1:200, Immunoprecipitation 1:10 - 1:500, Immunohistochemistry-Paraffin 1:100, Immunohistochemistry-Frozen 1:100
<b>Application Notes</b>	ELISA usage was reported in the scientific literature (PMID: 7692739). WB: Detects an approx. 120 kDa protein representing the sodium / calcium exchanger from guinea pig cardiac extract. Also detects 70 kDa and 160 kDa proteins representing a proteolytic fragment and non-reduced exchanger respectively. T-tubular membrane.

## Images

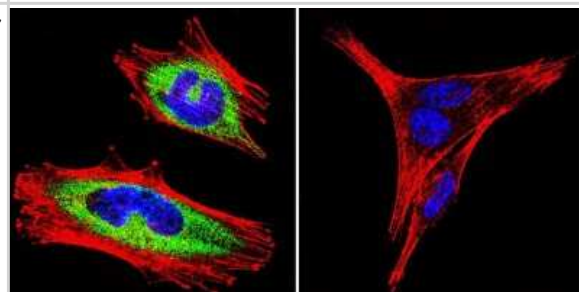
Immunocytochemistry/Immunofluorescence: Sodium-Calcium Exchanger Antibody (C2C12) [NB120-2869] - Sodium/Calcium Exchanger staining (green), F-Actin staining with Phalloidin (red) and nuclei with DAPI (blue) is shown. U251 cells were grown on chamber slides and fixed with formaldehyde prior to staining. Cells were probed without (control) or with or an antibody recognizing Sodium/Calcium Exchanger at a dilution of 1:100 over night at 4C, washed with PBS and incubated with a DyLight-488 conjugated secondary.



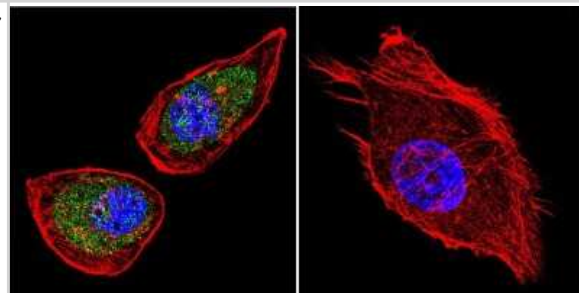
Immunohistochemistry-Paraffin: Sodium-Calcium Exchanger Antibody (C2C12) [NB120-2869] - Both normal and cancer biopsies of deparaffinized Human kidney tissues.



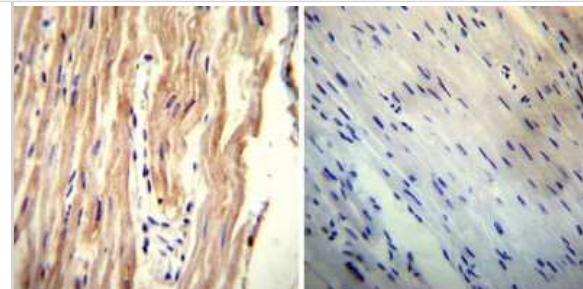
Immunocytochemistry/Immunofluorescence: Sodium-Calcium Exchanger Antibody (C2C12) [NB120-2869] - Sodium/Calcium Exchanger staining (green), F-Actin staining with Phalloidin (red) and nuclei with DAPI (blue) is shown. A2058 cells were grown on chamber slides and fixed with formaldehyde prior to staining. Cells were probed without (control) or with or an antibody recognizing Sodium/Calcium Exchanger at a dilution of 1:100 over night at 4C, washed with PBS and incubated with a DyLight-488 conjugated secondary.



Immunocytochemistry/Immunofluorescence: Sodium-Calcium Exchanger Antibody (C2C12) [NB120-2869] - Sodium/Calcium Exchanger staining (green), F-Actin staining with Phalloidin (red) and nuclei with DAPI (blue) is shown. A549 cells were grown on chamber slides and fixed with formaldehyde prior to staining. Cells were probed without (control) or with or an antibody recognizing Sodium/Calcium Exchanger at a dilution of 1:100 over night at 4C, washed with PBS and incubated with a DyLight-488 conjugated secondary.



Immunohistochemistry-Paraffin: Sodium-Calcium Exchanger Antibody (C2C12) [NB120-2869] - Both normal and cancer biopsies of deparaffinized Human heart tissue tissues.



## Publications

Jie Yan, Lan Wang, Qian-Lu Yang, Qian-Xi Yang, Xinyi He, Yujie Dong, Zhulin Hu, Mathias W Seeliger, Kangwei Jiao, François Paquet-Durand T-type voltage-gated channels, Na<sup>+</sup>/Ca<sup>2+</sup>-exchanger, and calpain-2 promote photoreceptor cell death in inherited retinal degeneration. Cell communication and signaling : CCS 2024-02-05 [PMID: 38303059]

Yan J, Wang L, Yang Q et al. Inherited retinal degeneration: T-type voltage-gated channels, Na<sup>+</sup>/Ca<sup>2+</sup>-exchanger and calpain-2 promote photoreceptor cell death bioRxiv 2023-07-18 (IHC, Mouse)

Sui S, Tian J, Gauba E et al. Cyclophilin D regulates neuronal activity-induced filopodiogenesis by fine-tuning dendritic mitochondrial calcium dynamics J. Neurochem. 2018-06-14 [PMID: 29900530] (WB)

Porzig H, Li Z, Nicoll DA et al. Mapping of the cardiac sodium-calcium exchanger with monoclonal antibodies. Am J Physiol;265(3 Pt 1):C748-56. 1993-09-01 [PMID: 7692739] (WB, Human)



### **Novus Biologicals USA**

10730 E. Briarwood Avenue  
Centennial, CO 80112  
USA  
Phone: 303.730.1950  
Toll Free: 1.888.506.6887  
Fax: 303.730.1966  
nb-customerservice@bio-techne.com

### **Bio-Techne Canada**

21 Canmotor Ave  
Toronto, ON M8Z 4E6  
Canada  
Phone: 905.827.6400  
Toll Free: 855.668.8722  
Fax: 905.827.6402  
canada.inquires@bio-techne.com

### **Bio-Techne Ltd**

19 Barton Lane  
Abingdon Science Park  
Abingdon, OX14 3NB, United Kingdom  
Phone: (44) (0) 1235 529449  
Free Phone: 0800 37 34 15  
Fax: (44) (0) 1235 533420  
info.EMEA@bio-techne.com

### **General Contact Information**

www.novusbio.com  
Technical Support: nb-technical@bio-techne.com  
Orders: nb-customerservice@bio-techne.com  
General: novus@novusbio.com

### **Products Related to NB120-2869**

HAF007	Goat anti-Mouse IgG Secondary Antibody [HRP]
NB720-B	Rabbit anti-Mouse IgG (H+L) Secondary Antibody [Biotin]
NBP1-97007	Mouse IgM Isotype Control
H00006547-P01-10ug	Recombinant Human SLC8A3/NCX3 GST (N-Term) Protein

### **Limitations**

This product is for research use only and is not approved for use in humans or in clinical diagnosis. Primary Antibodies are guaranteed for 1 year from date of receipt.

For more information on our 100% guarantee, please visit [www.novusbio.com/guarantee](http://www.novusbio.com/guarantee)

Earn gift cards/discounts by submitting a review: [www.novusbio.com/reviews/submit/NB120-2869](http://www.novusbio.com/reviews/submit/NB120-2869)

Earn gift cards/discounts by submitting a publication using this product:  
[www.novusbio.com/publications](http://www.novusbio.com/publications)

