

Product Datasheet

Calmodulin Antibody (2D1) - BSA Free NB120-2860

Unit Size: 200 uL

Store at -20C. Avoid freeze-thaw cycles.

www.novusbio.com



technical@novusbio.com

Publications: 3

Protocols, Publications, Related Products, Reviews, Research Tools and Images at:
www.novusbio.com/NB120-2860

Updated 10/23/2024 v.20.1

Earn rewards for product
reviews and publications.

Submit a publication at www.novusbio.com/publications

Submit a review at www.novusbio.com/reviews/destination/NB120-2860



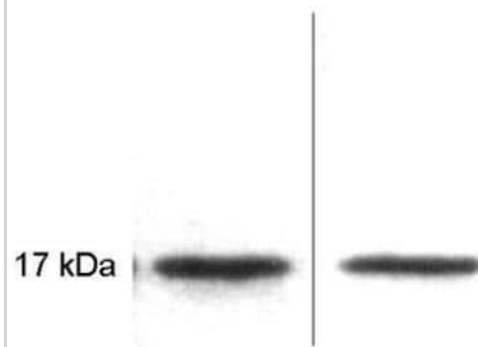
NB120-2860

Calmodulin Antibody (2D1) - BSA Free

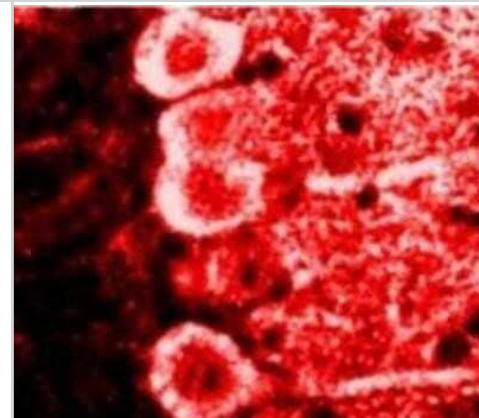
Product Information	
Unit Size	200 uL
Concentration	1 mg/ml
Storage	Store at -20C. Avoid freeze-thaw cycles.
Clonality	Monoclonal
Clone	2D1
Preservative	0.05% Sodium Azide
Isotype	IgG1
Purity	Protein A purified
Buffer	PBS
Product Description	
Host	Mouse
Gene ID	801
Gene Symbol	CALM1
Species	Human, Mouse, Rat, Bacteria, Bovine, Chicken
Reactivity Notes	E. coli, Chlamydomonas reinhardtii and Dictyostelium discoideum. Please note that this antibody is reactive to Mouse and derived from the same host, Mouse. Additional Mouse on Mouse blocking steps may be required for IHC and ICC experiments. Please contact Technical Support for more information.
Specificity/Sensitivity	This detects calmodulin. It does not detect parvalbumin, tropinin, S-100, or myosin light chain kinase (MLCK).
Immunogen	Calmodulin purified from Dictyostelium discoideum.
Product Application Details	
Applications	Western Blot, ELISA, Flow Cytometry, Immunocytochemistry/ Immunofluorescence, Immunohistochemistry, Immunohistochemistry-Paraffin
Recommended Dilutions	Western Blot 1:500, Flow Cytometry 2 ug / 10 ⁶ cells, ELISA 1:100 - 1:2000, Immunohistochemistry 1:20, Immunocytochemistry/ Immunofluorescence 1:10-1:500, Immunohistochemistry-Paraffin 1:20
Application Notes	WB: Detects an approx. 17 kDa protein representing calmodulin from Dictyostelium cell lysate. Addition of EDTA to buffers completely inhibits antibody staining. IHC: Staining of calmodulin in Dictyostelium cells with this antibody results in staining of the contractile vacuoles.

Images

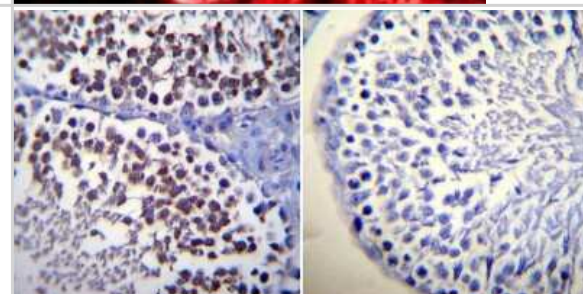
Western Blot: Calmodulin Antibody (2D1) [NB120-2860] - Purified Calmodulin using NB120-2860 and NB120-5494.

Fig. 2

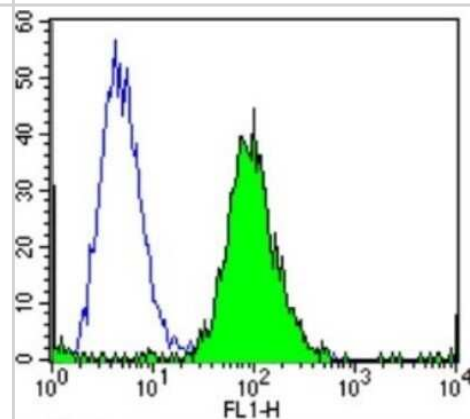
Immunocytochemistry/Immunofluorescence: Calmodulin Antibody (2D1) [NB120-2860] - Staining of rat brain.



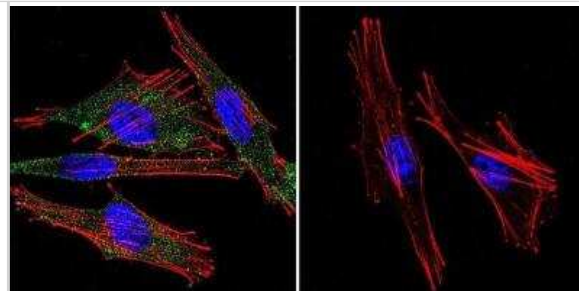
Immunohistochemistry-Paraffin: Calmodulin Antibody (2D1) [NB120-2860] - Normal biopsies of deparaffinized Rat testis tissue.



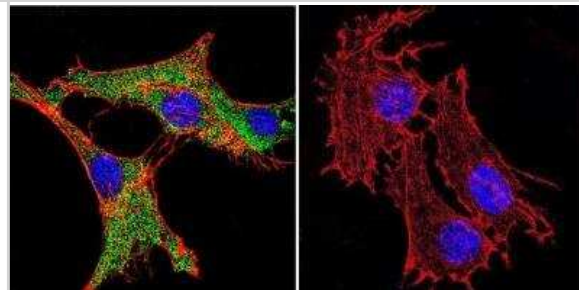
Flow Cytometry: Calmodulin Antibody (2D1) [NB120-2860] - Analysis of Calmodulin in MCF-7 cells compared to an isotype control (blue).



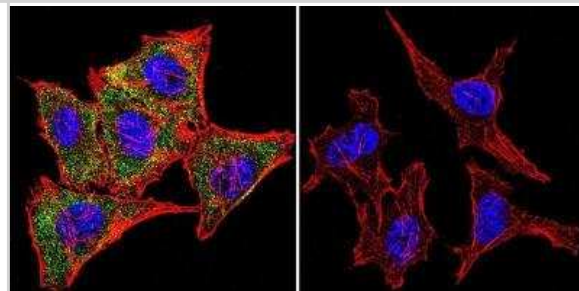
Immunocytochemistry/Immunofluorescence: Calmodulin Antibody (2D1) [NB120-2860] - Calmodulin staining (green), F-Actin staining with Phalloidin (red) and nuclei with DAPI (blue) is shown. A2058 melanoma cells were grown on chamber slides and fixed with formaldehyde prior to staining. Cells were probed without (control) or with or an antibody recognizing Calmodulin at a dilution of 1:20 over night at 4C, washed with PBS and incubated with a DyLight-488 conjugated.



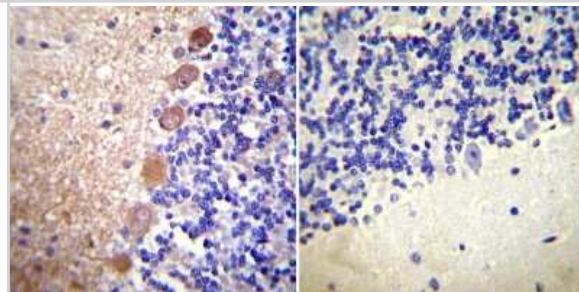
Immunocytochemistry/Immunofluorescence: Calmodulin Antibody (2D1) [NB120-2860] - Calmodulin staining (green), F-Actin staining with Phalloidin (red) and nuclei with DAPI (blue) is shown. C6 glioma cells were grown on chamber slides and fixed with formaldehyde prior to staining. Cells were probed without (control) or with or an antibody recognizing Calmodulin at a dilution of 1:20 over night at 4C, washed with PBS and incubated with a DyLight-488 conjugated.



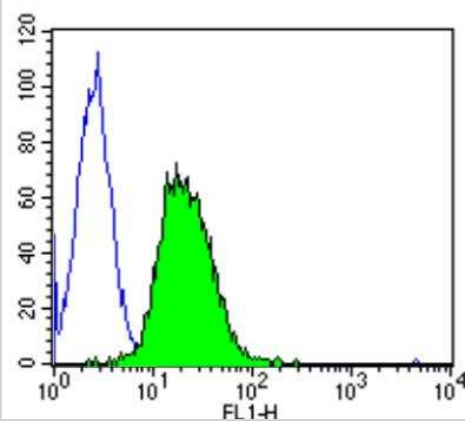
Immunocytochemistry/Immunofluorescence: Calmodulin Antibody (2D1) [NB120-2860] - Calmodulin staining (green), F-Actin staining with Phalloidin (red) and nuclei with DAPI (blue) is shown. HeLa Cells were grown on chamber slides and fixed with formaldehyde prior to staining. Cells were probed without (control) or with or an antibody recognizing Calmodulin at a dilution of 1:20 over night at 4C, washed with PBS and incubated with a DyLight-488 conjugated.



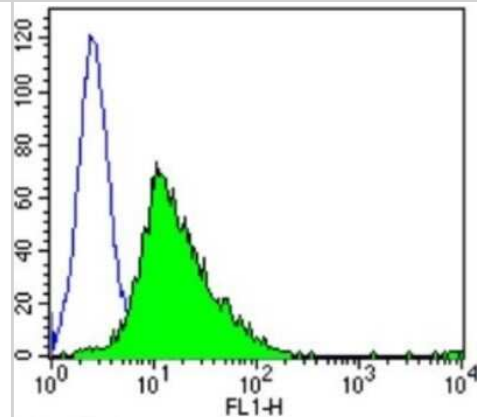
Immunohistochemistry-Paraffin: Calmodulin Antibody (2D1) [NB120-2860] - Normal biopsies of deparaffinized Rat cerebellum tissue.



Flow Cytometry: Calmodulin Antibody (2D1) [NB120-2860] - Analysis of Calmodulin in C6 cells compared to an isotype control (blue).



Flow Cytometry: Calmodulin Antibody (2D1) [NB120-2860] - Analysis of Calmodulin in PC12 cells compared to an isotype control (blue).



Publications

Fajardo VA, Watson CJF, Bott KN et al. Neurogranin is expressed in mammalian skeletal muscle and inhibits calcineurin signaling and myoblast fusion American Journal of Physiology-Cell Physiology 2019-11-01 [PMID: 31433693] (Block/Neutralize, Immunocytochemistry/ Immunofluorescence)

Kim S, Kim J, Park S Et Al. Activation of the EGFR-PI3K-CaM Pathway by PRL-1 Ameliorates Liver Cirrhosis via ER Stress-dependent Calcium Stem Cell Res Ther 2021-10-25 [PMID: 34689832]

Chimote Aa, Gawali Vs, Newton Hs et Al. A Compartmentalized Reduction in Membrane-Proximal Calmodulin Reduces the Immune Surveillance Capabilities of CD8+ T Cells in Head and Neck Cancer Front Pharmacol. [PMID: 32184726] (FLOW, ICC/IF, Human)



Novus Biologicals USA

10730 E. Briarwood Avenue
Centennial, CO 80112
USA
Phone: 303.730.1950
Toll Free: 1.888.506.6887
Fax: 303.730.1966
nb-customerservice@bio-techne.com

Bio-Techne Canada

21 Canmotor Ave
Toronto, ON M8Z 4E6
Canada
Phone: 905.827.6400
Toll Free: 855.668.8722
Fax: 905.827.6402
canada.inquires@bio-techne.com

Bio-Techne Ltd

19 Barton Lane
Abingdon Science Park
Abingdon, OX14 3NB, United Kingdom
Phone: (44) (0) 1235 529449
Free Phone: 0800 37 34 15
Fax: (44) (0) 1235 533420
info.EMEA@bio-techne.com

General Contact Information

www.novusbio.com
Technical Support: nb-technical@bio-techne.com
Orders: nb-customerservice@bio-techne.com
General: novus@novusbio.com

Products Related to NB120-2860

HAF007	Goat anti-Mouse IgG Secondary Antibody [HRP]
NB720-B	Rabbit anti-Mouse IgG (H+L) Secondary Antibody [Biotin]
NBP1-97005-0.5mg	Mouse IgG1 Isotype Control (MG1)
210-TA-005	TNF-alpha [Unconjugated]

Limitations

This product is for research use only and is not approved for use in humans or in clinical diagnosis. Primary Antibodies are guaranteed for 1 year from date of receipt.

For more information on our 100% guarantee, please visit www.novusbio.com/guarantee

Earn gift cards/discounts by submitting a review: www.novusbio.com/reviews/submit/NB120-2860

Earn gift cards/discounts by submitting a publication using this product:
www.novusbio.com/publications

