

# Product Datasheet

## Synaptophysin Antibody (SP11)

### NB120-16659

Unit Size: 0.5 ml

Store at 4C.

[www.novusbio.com](http://www.novusbio.com)



[technical@novusbio.com](mailto:technical@novusbio.com)

**Publications: 6**

Protocols, Publications, Related Products, Reviews, Research Tools and Images at:  
[www.novusbio.com/NB120-16659](http://www.novusbio.com/NB120-16659)

Updated 10/23/2024 v.20.1

Earn rewards for product  
reviews and publications.

Submit a publication at [www.novusbio.com/publications](http://www.novusbio.com/publications)

Submit a review at [www.novusbio.com/reviews/destination/NB120-16659](http://www.novusbio.com/reviews/destination/NB120-16659)

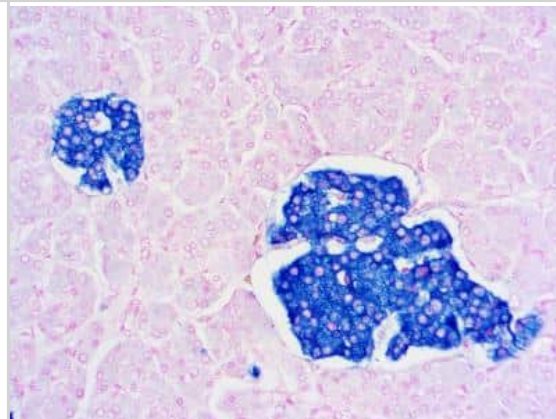


**NB120-16659****Synaptophysin Antibody (SP11)**

<b>Product Information</b>	
<b>Unit Size</b>	0.5 ml
<b>Concentration</b>	This product is unpurified. The exact concentration of antibody is not quantifiable.
<b>Storage</b>	Store at 4C.
<b>Clonality</b>	Monoclonal
<b>Clone</b>	SP11
<b>Preservative</b>	0.05% Sodium Azide
<b>Isotype</b>	IgG
<b>Purity</b>	Tissue culture supernatant
<b>Buffer</b>	Tissue culture supernatant
<b>Target Molecular Weight</b>	38 kDa
<b>Product Description</b>	
<b>Host</b>	Rabbit
<b>Gene ID</b>	6855
<b>Gene Symbol</b>	SYP
<b>Species</b>	Human, Mouse
<b>Reactivity Notes</b>	Mouse reactivity reported in scientific literature (PMID: 29420126). Not yet tested in other species.
<b>Marker</b>	Pre-synaptic marker
<b>Specificity/Sensitivity</b>	This antibody recognizes a protein of 38kDa, identified as synaptophysin. It labels normal neuroendocrine cells of human adrenal medulla, carotid body, skin, pituitary gland, thyroid, lung, pancreas, gastrointestinal mucosa, Paneth's cells in the gastrointestinal tract and gastric parietal cells. Neurons in the brain, spinal cord, and retina are also labeled. In combination with anti-chromogranin A and anti-NSE, anti-synaptophysin is very useful in the identification of normal neuroendocrine cells and neuroendocrine neoplasms.
<b>Immunogen</b>	Synthetic peptide of human Synaptophysin.
<b>Product Application Details</b>	
<b>Applications</b>	Immunocytochemistry/ Immunofluorescence, Immunohistochemistry, Immunohistochemistry-Paraffin
<b>Recommended Dilutions</b>	Immunohistochemistry 1:25-1:50, Immunocytochemistry/ Immunofluorescence, Immunohistochemistry-Paraffin 1:25-1:50
<b>Application Notes</b>	IHC-P: recommended incubation time of 30-60 min at RT. Use in Immunocytochemistry/immunofluorescence reported in scientific literature (PMID 25483960).

## Images

Immunohistochemistry-Paraffin: Synaptophysin Antibody (SP11) [NB120-16659] - Formalin fixed paraffin embedded human pancreas stained with Synaptophysin antibody (NB120-16659).



## Publications

Saber N, Ellis CE, Iworima DG et al. The impact of different implantation sites and sex on the differentiation of human pancreatic endoderm cells into insulin-secreting cells in vivo *Diabetes* 2023-02-06 [PMID: 36745576]

Yu N, Wang S, Song X, Gao L. Low-Dose Radiation Promotes Dendritic Cell Migration and IL-12 Production via the ATM/NF-kappaB Pathway. *Radiat. Res.* 2018-02-08 [PMID: 29420126] (Mouse)

Saber N, Bruin JE, O'Dwyer S, Schuster H. Sex differences in maturation of human embryonic stem cell-derived beta cells in mice. *Endocrinology*. 2018-02-05 [PMID: 29420708] (Human)

Bruin JE, Saber N, O'Dwyer S et al. Hypothyroidism impairs human stem cell-derived pancreatic progenitor cell maturation in mice. *Diabetes*. 2016-01-06 [PMID: 26740603]

Bruin JE, Asadi A, Fox JK et al. Accelerated Maturation of Human Stem Cell-Derived Pancreatic Progenitor Cells into Insulin-Secreting Cells in Immunodeficient Rats Relative to Mice. *Stem Cell Reports*. 2015-12-08 [PMID: 26677767] (IHC-P, Human)

Gage BK, Baker RK, Kieffer TJ. Overexpression of PAX4 reduces glucagon expression in differentiating hESCs. *Islets*. 2014-06-17 [PMID: 25483960] (IHC-P, ICC/IF, Human)



### **Novus Biologicals USA**

10730 E. Briarwood Avenue  
Centennial, CO 80112  
USA  
Phone: 303.730.1950  
Toll Free: 1.888.506.6887  
Fax: 303.730.1966  
nb-customerservice@bio-techne.com

### **Bio-Techne Canada**

21 Canmotor Ave  
Toronto, ON M8Z 4E6  
Canada  
Phone: 905.827.6400  
Toll Free: 855.668.8722  
Fax: 905.827.6402  
canada.inquires@bio-techne.com

### **Bio-Techne Ltd**

19 Barton Lane  
Abingdon Science Park  
Abingdon, OX14 3NB, United Kingdom  
Phone: (44) (0) 1235 529449  
Free Phone: 0800 37 34 15  
Fax: (44) (0) 1235 533420  
info.EMEA@bio-techne.com

### **General Contact Information**

www.novusbio.com  
Technical Support: nb-technical@bio-techne.com  
Orders: nb-customerservice@bio-techne.com  
General: novus@novusbio.com

### **Products Related to NB120-16659**

---

HAF008	Goat anti-Rabbit IgG Secondary Antibody [HRP]
NB7160	Goat anti-Rabbit IgG (H+L) Secondary Antibody [HRP]
NBP2-24891	Rabbit IgG Isotype Control
H00006855-P01-10ug	Recombinant Human Synaptophysin GST (N-Term) Protein

---

### **Limitations**

This product is for research use only and is not approved for use in humans or in clinical diagnosis. Primary Antibodies are guaranteed for 1 year from date of receipt.

For more information on our 100% guarantee, please visit [www.novusbio.com/guarantee](http://www.novusbio.com/guarantee)

Earn gift cards/discounts by submitting a review: [www.novusbio.com/reviews/submit/NB120-16659](http://www.novusbio.com/reviews/submit/NB120-16659)

Earn gift cards/discounts by submitting a publication using this product:  
[www.novusbio.com/publications](http://www.novusbio.com/publications)

