

# Product Datasheet

## AlphaA Crystallin/CRYAA Antibody (c9F2) NB120-14821-0.05ml

Unit Size: 0.05 ml

Store at 4C short term. Aliquot and store at -20C long term. Avoid freeze-thaw cycles.

[www.novusbio.com](http://www.novusbio.com)



[technical@novusbio.com](mailto:technical@novusbio.com)

Protocols, Publications, Related Products, Reviews, Research Tools and Images at:  
[www.novusbio.com/NB120-14821](http://www.novusbio.com/NB120-14821)

Updated 12/11/2024 v.20.1

Earn rewards for product  
reviews and publications.

Submit a publication at [www.novusbio.com/publications](http://www.novusbio.com/publications)

Submit a review at [www.novusbio.com/reviews/destination/NB120-14821](http://www.novusbio.com/reviews/destination/NB120-14821)



**NB120-14821-0.05ml**

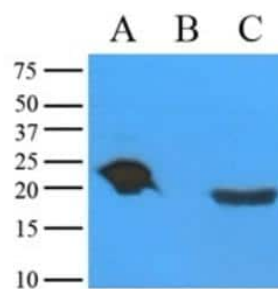
AlphaA Crystallin/CRYAA Antibody (c9F2)

Product Information	
Unit Size	0.05 ml
Concentration	1.0 mg/ml
Storage	Store at 4C short term. Aliquot and store at -20C long term. Avoid freeze-thaw cycles.
Clonality	Monoclonal
Clone	c9F2
Preservative	0.02% Sodium Azide
Isotype	IgG1
Purity	Protein G purified
Buffer	PBS
Product Description	
Host	Mouse
Gene ID	1409
Gene Symbol	CRYAA
Species	Human
Reactivity Notes	Predicted cross-reactivities: Rat
Specificity/Sensitivity	NB120-14821 recognizes alpha A crystallin, a 20kDa water-soluble major structural protein and member of the heat shock protein family, designated HSPB4, which acts as a molecular chaperone and is believed to play a role in the maintenance of ocular lens transparency/refractive index. Besides the involvement of both alpha A and alpha B crystallin in the prevention of protein precipitation and cataract formation in the eye, alpha crystallins have also been demonstrated in other tissues including the heart, brain, kidney, spleen and thymus.
Immunogen	E. coli-derived recombinant protein corresponding to full-length (aa1-173) human crystallin alpha A
Product Application Details	
Applications	Western Blot, ELISA
Recommended Dilutions	Western Blot 1:1000-1:2000, ELISA 1:100-1:2000
Application Notes	NB120-14821 detects alpha A Crystallin from rat eye extracts at a dilution of 1:1000. Proteins are visualized using a goat anti-mouse secondary antibody conjugated to HRP and a DAB detection system.



## Images

Western Blot: AlphaA Crystallin/CRYAA Antibody (c9F2) [NB120-14821]  
- Analysis of recombinant crystallin proteins and mouse eye derived lysates probed with Mouse anti Human alpha crystallin.



A: Crystallin-alpha A recombinant protein  
B: Crystallin-alpha B recombinant protein  
C: Mouse eye lysates



### **Novus Biologicals USA**

10730 E. Briarwood Avenue  
Centennial, CO 80112  
USA  
Phone: 303.730.1950  
Toll Free: 1.888.506.6887  
Fax: 303.730.1966  
nb-customerservice@bio-techne.com

### **Bio-Techne Canada**

21 Canmotor Ave  
Toronto, ON M8Z 4E6  
Canada  
Phone: 905.827.6400  
Toll Free: 855.668.8722  
Fax: 905.827.6402  
canada.inquires@bio-techne.com

### **Bio-Techne Ltd**

19 Barton Lane  
Abingdon Science Park  
Abingdon, OX14 3NB, United Kingdom  
Phone: (44) (0) 1235 529449  
Free Phone: 0800 37 34 15  
Fax: (44) (0) 1235 533420  
info.EMEA@bio-techne.com

### **General Contact Information**

[www.novusbio.com](http://www.novusbio.com)  
Technical Support: [nb-technical@bio-techne.com](mailto:nb-technical@bio-techne.com)  
Orders: [nb-customerservice@bio-techne.com](mailto:nb-customerservice@bio-techne.com)  
General: [novus@novusbio.com](mailto:novus@novusbio.com)

### **Limitations**

This product is for research use only and is not approved for use in humans or in clinical diagnosis. Primary Antibodies are guaranteed for 1 year from date of receipt.

For more information on our 100% guarantee, please visit [www.novusbio.com/guarantee](http://www.novusbio.com/guarantee)

Earn gift cards/discounts by submitting a review: [www.novusbio.com/reviews/submit/NB120-14821](http://www.novusbio.com/reviews/submit/NB120-14821)

Earn gift cards/discounts by submitting a publication using this product:  
[www.novusbio.com/publications](http://www.novusbio.com/publications)

