

# Product Datasheet

## beta Tubulin Antibody (SAP.4G5) NB120-11312

Unit Size: 0.1 ml

Store at 4C short term. Aliquot and store at -20C long term. Avoid freeze-thaw cycles.

[www.novusbio.com](http://www.novusbio.com)



[technical@novusbio.com](mailto:technical@novusbio.com)

### Publications: 2

Protocols, Publications, Related Products, Reviews, Research Tools and Images at:  
[www.novusbio.com/NB120-11312](http://www.novusbio.com/NB120-11312)

Updated 2/17/2025 v.20.1

Earn rewards for product  
reviews and publications.

Submit a publication at [www.novusbio.com/publications](http://www.novusbio.com/publications)

Submit a review at [www.novusbio.com/reviews/destination/NB120-11312](http://www.novusbio.com/reviews/destination/NB120-11312)



**NB120-11312**

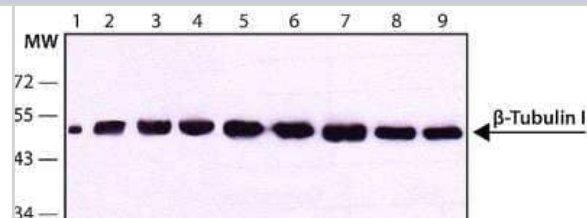
beta Tubulin Antibody (SAP.4G5)

<b>Product Information</b>	
<b>Unit Size</b>	0.1 ml
<b>Concentration</b>	This product is unpurified. The exact concentration of antibody is not quantifiable.
<b>Storage</b>	Store at 4C short term. Aliquot and store at -20C long term. Avoid freeze-thaw cycles.
<b>Clonality</b>	Monoclonal
<b>Clone</b>	SAP.4G5
<b>Preservative</b>	0.09% Sodium Azide
<b>Isotype</b>	IgG1
<b>Purity</b>	Unpurified
<b>Buffer</b>	Raw ascites
<b>Product Description</b>	
<b>Host</b>	Mouse
<b>Gene ID</b>	203068
<b>Gene Symbol</b>	TUBB
<b>Species</b>	Human, Mouse, Rat, Bovine, Canine, Chicken, Xenopus
<b>Reactivity Notes</b>	Cross-reacts with Human, Mouse, Rat, Xenopus laevis, Cow, Chicken and Dog. Not yet tested in other species. Please note that this antibody is reactive to Mouse and derived from the same host, Mouse. Additional Mouse on Mouse blocking steps may be required for IHC and ICC experiments. Please contact Technical Support for more information.
<b>Specificity/Sensitivity</b>	No reactivity with other tubulin isotypes is observed.
<b>Immunogen</b>	Synthetic peptide corresponding to the C-terminal sequence of beta-tubulin isotype I (Uniprot: P07437), conjugated to BSA
<b>Product Application Details</b>	
<b>Applications</b>	Western Blot, ELISA, Immunocytochemistry/ Immunofluorescence, Immunohistochemistry, Immunohistochemistry-Paraffin, Immunoprecipitation, Microarray
<b>Recommended Dilutions</b>	Western Blot 1:20000, ELISA 1:100-1:2000, Immunohistochemistry 1:10-1:500, Immunocytochemistry/ Immunofluorescence 1:10-1:500, Immunoprecipitation, Immunohistochemistry-Paraffin 1:10-1:500, Microarray
<b>Application Notes</b>	ICC: Use (methanolacetone and 3% paraformaldehyde-0.5% Triton-x-100 fixations). IHC: Use 10% neutral buffered formalin-alcoholic formalin-xylene, paraffin-embedded. WB: Predicted molecular weight: 55kDa.

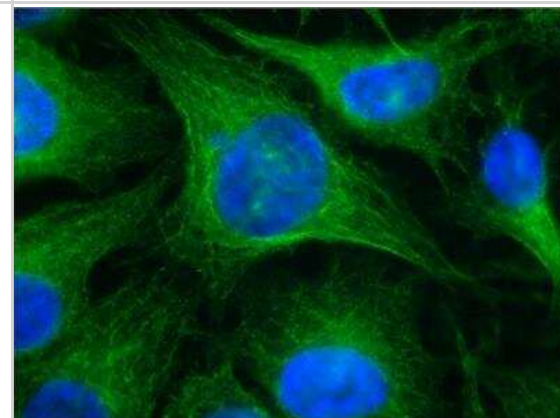


## Images

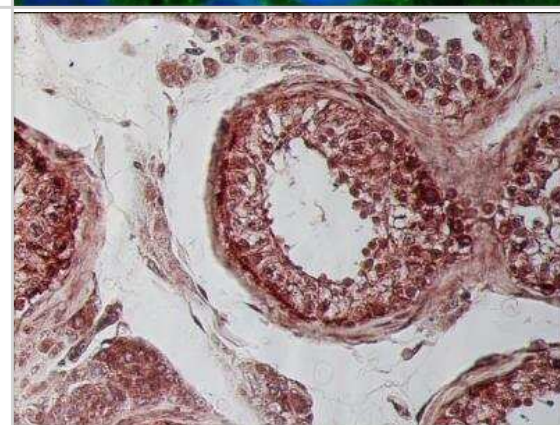
Western Blot: beta Tubulin Antibody (SAP.4G5) [NB120-11312] - Cell line lysates were separated on SDS-PAGE and probed with Monoclonal Anti-beta-Tubulin I antibody Clone: SAP.4G5. The antibody was developed using Goat Anti-Mouse IgG-Peroxidase and a chemiluminescent substrate. Lanes: 1.) Chicken Fibroblasts, 2.) Mouse brain extract I, 3.) Mouse brain extract II, 4.) Rat brain, 5.) Jurkat, 6.) Daudi, 7.) SK-Mel-28, 8.) G361, 9.) HeLa



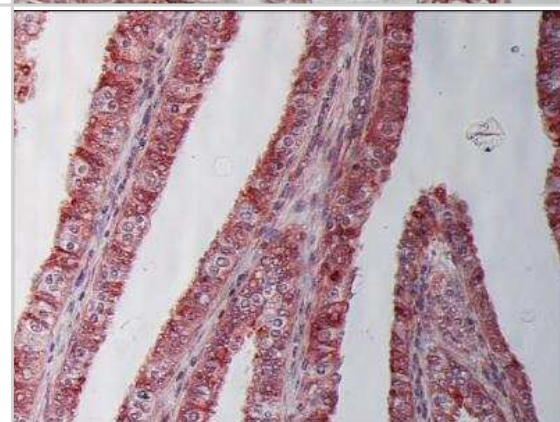
Immunocytochemistry/Immunofluorescence: beta Tubulin Antibody (SAP.4G5) [NB120-11312] - HeLa cells were fixed and permeabilized with 4% paraformaldehyde followed by 0.5% Triton(TM) X-100. Fixed cells were stained with Monoclonal Anti-beta-Tubulin I antibody Clone: SAP.4G5. The antibody was developed using Goat Anti-Mouse IgG, Atto-488 conjugate. Cells were counterstained with DAPI (blue) to stain nuclei.



Immunohistochemistry-Paraffin: beta Tubulin Antibody (SAP.4G5) [NB120-11312] - Staining of formalin-fixed, paraffin-embedded human testis sections with Monoclonal Anti-beta-Tubulin I, Clone: SAP.4G5 using biotin/ExtrAvidin(R)-Peroxidase.



Immunohistochemistry-Paraffin: beta Tubulin Antibody (SAP.4G5) [NB120-11312] - Staining of formalin-fixed, paraffin-embedded human fallopian tube sections with Monoclonal Anti-beta-Tubulin I, Clone: SAP.4G5 using biotin/ExtrAvidin(R)-Peroxidase.



## Publications

Elazar N, Vainshtein A, Golan N, Vijayaragavan B et Al. Axoglial Adhesion by Cadm4 Regulates CNS Myelination Neuron 2018-12-16 [PMID: 30551998]

Hausrat TJ, Radwitz J, Lombino FL et al. Alpha- and beta-tubulin isotypes are differentially expressed during brain development Dev Neurobiol 2020-04-15 [PMID: 32293117] (WB, Human)





### **Novus Biologicals USA**

10730 E. Briarwood Avenue  
Centennial, CO 80112  
USA  
Phone: 303.730.1950  
Toll Free: 1.888.506.6887  
Fax: 303.730.1966  
nb-customerservice@bio-techne.com

### **Bio-Techne Canada**

21 Canmotor Ave  
Toronto, ON M8Z 4E6  
Canada  
Phone: 905.827.6400  
Toll Free: 855.668.8722  
Fax: 905.827.6402  
canada.inquires@bio-techne.com

### **Bio-Techne Ltd**

19 Barton Lane  
Abingdon Science Park  
Abingdon, OX14 3NB, United Kingdom  
Phone: (44) (0) 1235 529449  
Free Phone: 0800 37 34 15  
Fax: (44) (0) 1235 533420  
info.EMEA@bio-techne.com

### **General Contact Information**

www.novusbio.com  
Technical Support: nb-technical@bio-techne.com  
Orders: nb-customerservice@bio-techne.com  
General: novus@novusbio.com

### **Products Related to NB120-11312**

---

NBL1-17436	beta I Tubulin Overexpression Lysate
HAF007	Goat anti-Mouse IgG Secondary Antibody [HRP]
NB720-B	Rabbit anti-Mouse IgG (H+L) Secondary Antibody [Biotin]
NBP1-97005-0.5mg	Mouse IgG1 Isotype Control (MG1)

---

### **Limitations**

This product is for research use only and is not approved for use in humans or in clinical diagnosis. Primary Antibodies are guaranteed for 1 year from date of receipt.

For more information on our 100% guarantee, please visit [www.novusbio.com/guarantee](http://www.novusbio.com/guarantee)

Earn gift cards/discounts by submitting a review: [www.novusbio.com/reviews/submit/NB120-11312](http://www.novusbio.com/reviews/submit/NB120-11312)

Earn gift cards/discounts by submitting a publication using this product:  
[www.novusbio.com/publications](http://www.novusbio.com/publications)

