

Product Datasheet

Plectin Antibody (7A8) NB120-11220

Unit Size: 0.1 ml

Store at 4C short term. Aliquot and store at -20C long term. Avoid freeze-thaw cycles.

www.novusbio.com



technical@novusbio.com

Publications: 1

Protocols, Publications, Related Products, Reviews, Research Tools and Images at:
www.novusbio.com/NB120-11220

Updated 10/23/2024 v.20.1

Earn rewards for product
reviews and publications.

Submit a publication at www.novusbio.com/publications

Submit a review at www.novusbio.com/reviews/destination/NB120-11220



NB120-11220**Plectin Antibody (7A8)**

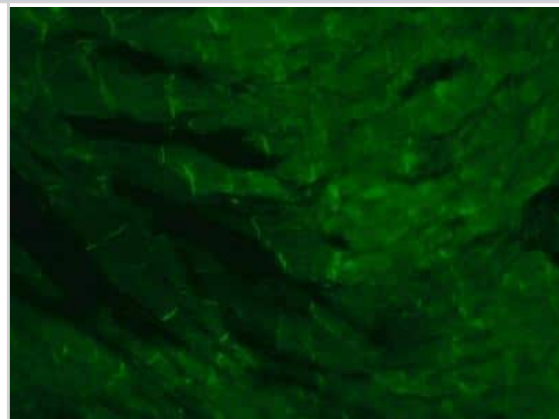
Product Information	
Unit Size	0.1 ml
Concentration	This product is unpurified. The exact concentration of antibody is not quantifiable.
Storage	Store at 4C short term. Aliquot and store at -20C long term. Avoid freeze-thaw cycles.
Clonality	Monoclonal
Clone	7A8
Preservative	0.1% Sodium Azide
Isotype	IgG1
Purity	Unpurified
Buffer	Ascites

Product Description	
Host	Mouse
Gene ID	5339
Gene Symbol	PLEC
Species	Human, Mouse, Rat, Bovine, Mammal
Reactivity Notes	Bovine reactivity reported in scientific literature (PMID: 30591979). Cross-reacts with Marsupials. Not yet tested in other species. Please note that this antibody is reactive to Mouse and derived from the same host, Mouse. Additional Mouse on Mouse blocking steps may be required for IHC and ICC experiments. Please contact Technical Support for more information.
Specificity/Sensitivity	The inhibits the interaction of plectin with vimentin and lamin B.
Immunogen	Plectin purified from rat glioma C6 cells.

Product Application Details	
Applications	Western Blot, Dot Blot, ELISA, Electron Microscopy, Immunocytochemistry/ Immunofluorescence, Immunohistochemistry, Immunohistochemistry-Frozen
Recommended Dilutions	Western Blot 1:100-1:2000, ELISA 1:100-1:2000, Immunohistochemistry 1:10-1:500, Immunocytochemistry/ Immunofluorescence 1:10-1:500, Immunohistochemistry-Frozen 1:10-1:500, Dot Blot, Electron Microscopy
Application Notes	WB: Detects a band of approximately 300 kDa.

Images

Immunohistochemistry: Plectin Antibody (7A8) [NB120-11220] - Frozen sections acetone fixed Rat cardiac muscle tissue sections were stained with 1:200 Monoclonal Anti-Plectin antibody produced in Mouse, Clone: 7A8, followed by 1:30 Anti-Mouse IgG (Fab specific)-FITC antibody produced in Goat.



Publications

Domke LM, Franke WW. The cell-cell junctions of mammalian testes: II. The lamellar smooth muscle monolayer cells of the peritubular wall are laterally connected by vertical adherens junctions-a novel architectonic cell-cell junction system *Cell Tissue Res.* 2018-12-27 [PMID: 30591979] (ICC/IF, Bovine)





Novus Biologicals USA

10730 E. Briarwood Avenue
Centennial, CO 80112
USA
Phone: 303.730.1950
Toll Free: 1.888.506.6887
Fax: 303.730.1966
nb-customerservice@bio-techne.com

Bio-Techne Canada

21 Canmotor Ave
Toronto, ON M8Z 4E6
Canada
Phone: 905.827.6400
Toll Free: 855.668.8722
Fax: 905.827.6402
canada.inquires@bio-techne.com

Bio-Techne Ltd

19 Barton Lane
Abingdon Science Park
Abingdon, OX14 3NB, United Kingdom
Phone: (44) (0) 1235 529449
Free Phone: 0800 37 34 15
Fax: (44) (0) 1235 533420
info.EMEA@bio-techne.com

General Contact Information

www.novusbio.com
Technical Support: nb-technical@bio-techne.com
Orders: nb-customerservice@bio-techne.com
General: novus@novusbio.com

Products Related to NB120-11220

HAF007	Goat anti-Mouse IgG Secondary Antibody [HRP]
NB720-B	Rabbit anti-Mouse IgG (H+L) Secondary Antibody [Biotin]
NBP1-97005-0.5mg	Mouse IgG1 Isotype Control (MG1)
H00005339-Q01-10ug	Recombinant Human Plectin GST (N-Term) Protein

Limitations

This product is for research use only and is not approved for use in humans or in clinical diagnosis. Primary Antibodies are guaranteed for 1 year from date of receipt.

For more information on our 100% guarantee, please visit www.novusbio.com/guarantee

Earn gift cards/discounts by submitting a review: www.novusbio.com/reviews/submit/NB120-11220

Earn gift cards/discounts by submitting a publication using this product:
www.novusbio.com/publications

