

# Product Datasheet

## pan Actin Antibody (AC-40)

### NB120-11003

Unit Size: 0.1 ml

Store at 4C short term. Aliquot and store at -20C long term. Avoid freeze-thaw cycles.

[www.novusbio.com](http://www.novusbio.com)



[technical@novusbio.com](mailto:technical@novusbio.com)

**Reviews: 1 Publications: 2**

Protocols, Publications, Related Products, Reviews, Research Tools and Images at:  
[www.novusbio.com/NB120-11003](http://www.novusbio.com/NB120-11003)

Updated 10/23/2024 v.20.1

Earn rewards for product  
reviews and publications.

Submit a publication at [www.novusbio.com/publications](http://www.novusbio.com/publications)

Submit a review at [www.novusbio.com/reviews/destination/NB120-11003](http://www.novusbio.com/reviews/destination/NB120-11003)



**NB120-11003**

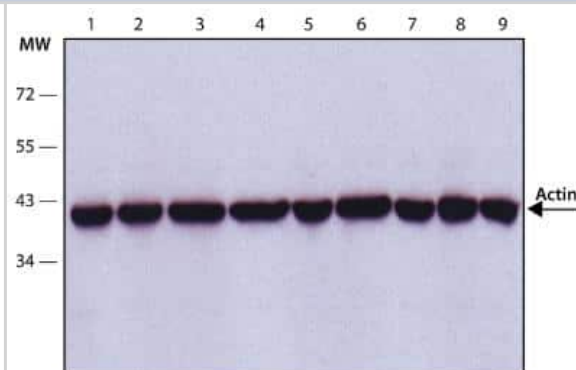
pan Actin Antibody (AC-40)

Product Information	
Unit Size	0.1 ml
Concentration	This product is unpurified. The exact concentration of antibody is not quantifiable.
Storage	Store at 4C short term. Aliquot and store at -20C long term. Avoid freeze-thaw cycles.
Clonality	Monoclonal
Clone	AC-40
Preservative	0.9% Sodium Azide
Isotype	IgG2a
Purity	Unpurified
Buffer	Ascites
Target Molecular Weight	42 kDa
Product Description	
Host	Mouse
Gene ID	58
Gene Symbol	ACTA1
Species	Human, Mouse, Rat, Porcine, Amphibian, Bovine, Canine, Chicken, Chinese Hamster, Guinea Pig, Goat, Primate, Rabbit, Reptile, Sheep
Reactivity Notes	Please note that this antibody is reactive to Mouse and derived from the same host, Mouse. Additional Mouse on Mouse blocking steps may be required for IHC and ICC experiments. Please contact Technical Support for more information.
Specificity/Sensitivity	The does not react with the epitope on the N-terminal end of actin.
Immunogen	Synthetic peptide: SGPSIVHALCP (human) attached to Multiple Antigen Peptide (MAP) backbone.
Product Application Details	
Applications	Western Blot, Simple Western, ELISA, Immunocytochemistry/ Immunofluorescence, Immunohistochemistry, Immunohistochemistry-Frozen
Recommended Dilutions	Western Blot 1:500, Simple Western, ELISA 1:100-1:2000, Immunohistochemistry 1:10-1:500, Immunocytochemistry/ Immunofluorescence 1:200, Immunohistochemistry-Frozen 1:10-1:500
Application Notes	For IHC: The epitope recognized by the antibody is resistant to formalin-fixation and paraffin-embedding. Zinc-formalin, B5, ethanol, methacarn, Brunnel's or Bouin's solutions may also be used as fixatives. See <a href="#">Simple Western Antibody Database</a> for Simple Western validation: tested in HEK293 and mouse brain; separated by Size-Jess/Wes, Sally Sue/Peggy Sue, antibody dilution of 1:200; apparent MW in kDa on Simple Western was 50 kDa; matrix was 12-230 kDa.

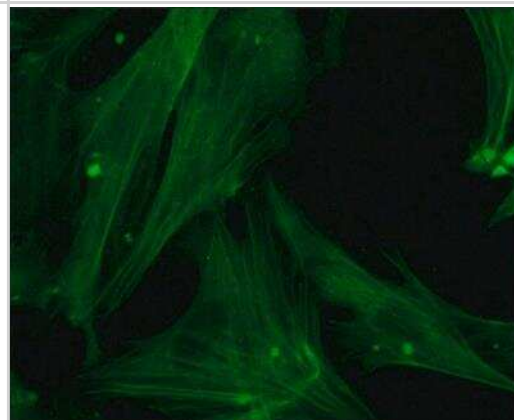


## Images

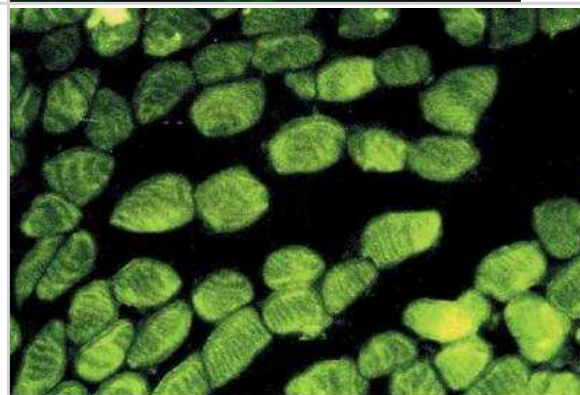
Western Blot: pan Actin Antibody (AC-40) [NB120-11003] - Cell line lysates lanes: 1. HeLa, 2. JURKAT, 3. COS7, 4. NIH-3T3, 5. PC-12, 6. RAT2, 7. CHO, 8. MDBK, 9. MDCK.



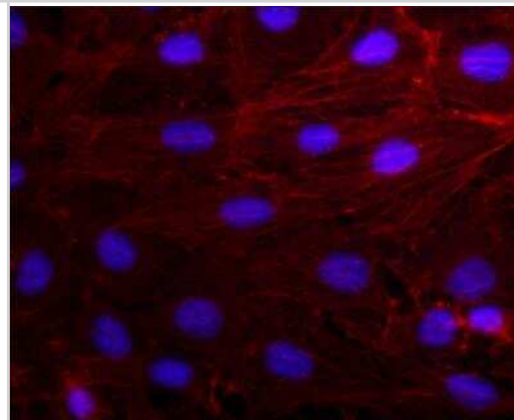
Immunocytochemistry/Immunofluorescence: pan Actin Antibody (AC-40) [NB120-11003] - CFB cells were fixed and permeabilized with methanol followed by acetone. Fixed cells were stained with Monoclonal Anti-Actin produced in mouse clone No. AC-40. The antibody was developed using Anti-Mouse IgG (Fab specific)-FITC antibody produced in goat. Cells were counterstained with DAPI (blue) to stain nuclei.



Immunocytochemistry/Immunofluorescence: pan Actin Antibody (AC-40) [NB120-11003] - conserved C-terminus specific Monoclonal staining of human tongue frozen section with Monoclonal Anti-Actin



Immunocytochemistry/Immunofluorescence: pan Actin Antibody (AC-40) [NB120-11003] - Rat2 cells were fixed and permeabilized with methanol followed by methanol:acetone. Fixed cells were stained with 1:250 Monoclonal Anti-Actin Clone: AC-40. The antibody was developed using Goat Anti-Mouse IgG, Cy3 conjugate. Cells were counterstained with DAPI (blue) to stain nuclei.



## Publications

Osorio FG, Soria-Valles C, Santiago-Fernandez O et al. Loss of the proteostasis factor AIRAPL causes myeloid transformation by deregulating IGF-1 signaling. *Nat. Med.* 2016-01-01 [PMID: 26692333] (WB, Mouse, Human)

Bibeau K, Battista MC, Houde V et al. Fetal adrenal gland alterations in a rat model of adverse intrauterine environment. *Am J Physiol Regul Integr Comp Physiol.* 2009-11-18 [PMID: 19923365]





### **Novus Biologicals USA**

10730 E. Briarwood Avenue  
Centennial, CO 80112  
USA  
Phone: 303.730.1950  
Toll Free: 1.888.506.6887  
Fax: 303.730.1966  
nb-customerservice@bio-techne.com

### **Bio-Techne Canada**

21 Canmotor Ave  
Toronto, ON M8Z 4E6  
Canada  
Phone: 905.827.6400  
Toll Free: 855.668.8722  
Fax: 905.827.6402  
canada.inquires@bio-techne.com

### **Bio-Techne Ltd**

19 Barton Lane  
Abingdon Science Park  
Abingdon, OX14 3NB, United Kingdom  
Phone: (44) (0) 1235 529449  
Free Phone: 0800 37 34 15  
Fax: (44) (0) 1235 533420  
info.EMEA@bio-techne.com

### **General Contact Information**

[www.novusbio.com](http://www.novusbio.com)  
Technical Support: nb-technical@bio-techne.com  
Orders: nb-customerservice@bio-techne.com  
General: novus@novusbio.com

### **Products Related to NB120-11003**

---

HAF007	Goat anti-Mouse IgG Secondary Antibody [HRP]
NB720-B	Rabbit anti-Mouse IgG (H+L) Secondary Antibody [Biotin]
NBP1-96778	Mouse IgG2a Isotype Control (M2A)
664-LI-025	LIGHT/TNFSF14 [Unconjugated]

---

### **Limitations**

This product is for research use only and is not approved for use in humans or in clinical diagnosis. Primary Antibodies are guaranteed for 1 year from date of receipt.

For more information on our 100% guarantee, please visit [www.novusbio.com/guarantee](http://www.novusbio.com/guarantee)

Earn gift cards/discounts by submitting a review: [www.novusbio.com/reviews/submit/NB120-11003](http://www.novusbio.com/reviews/submit/NB120-11003)

Earn gift cards/discounts by submitting a publication using this product:  
[www.novusbio.com/publications](http://www.novusbio.com/publications)

