

# Product Datasheet

## ERK1/2 Antibody [mFluor Violet 610 SE] NB110-96887MFV610

Unit Size: 0.1 ml

Store at 4C in the dark.

[www.novusbio.com](http://www.novusbio.com)



[technical@novusbio.com](mailto:technical@novusbio.com)

Protocols, Publications, Related Products, Reviews, Research Tools and Images at:  
[www.novusbio.com/NB110-96887MFV610](http://www.novusbio.com/NB110-96887MFV610)

Updated 11/8/2023 v.20.1

Earn rewards for product  
reviews and publications.

Submit a publication at [www.novusbio.com/publications](http://www.novusbio.com/publications)

Submit a review at [www.novusbio.com/reviews/destination/NB110-96887MFV610](http://www.novusbio.com/reviews/destination/NB110-96887MFV610)



**NB110-96887MFV610**

ERK1/2 Antibody [mFluor Violet 610 SE]

**Product Information**

<b>Unit Size</b>	0.1 ml
<b>Concentration</b>	Please see the vial label for concentration. If unlisted please contact technical services.
<b>Storage</b>	Store at 4C in the dark.
<b>Clonality</b>	Polyclonal
<b>Preservative</b>	0.05% Sodium Azide
<b>Isotype</b>	IgG
<b>Conjugate</b>	mFluor Violet 610 SE
<b>Purity</b>	Peptide affinity purified
<b>Buffer</b>	50mM Sodium Borate

**Product Description**

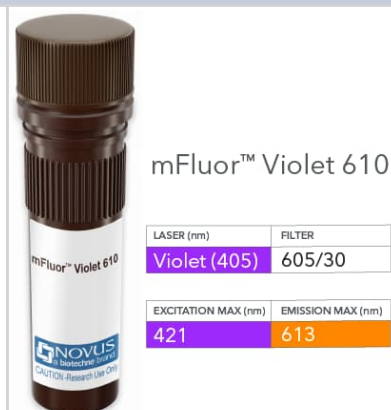
<b>Host</b>	Rabbit
<b>Gene ID</b>	5595
<b>Gene Symbol</b>	MAPK3
<b>Species</b>	Human, Mouse, Rat, Bovine, Chicken, Drosophila, Sheep, Xenopus
<b>Specificity/Sensitivity</b>	Detects approx 44kda (ERK1) and approx 42kDa (ERK2).
<b>Immunogen</b>	A 35 residue synthetic peptide, corresponding to Erk1 MAP kinase with the CGG spacer group added and the peptide coupled to KLH.

**Product Application Details**

<b>Applications</b>	Flow Cytometry, Immunohistochemistry
<b>Recommended Dilutions</b>	Flow Cytometry, Immunohistochemistry
<b>Application Notes</b>	Optimal dilution of this antibody should be experimentally determined.

**Images**

ERK1/2 Antibody [mFluor Violet 610 SE] [NB110-96887MFV610] - Vial of mFluor Violet 610 conjugated antibody. mFluor Violet 610 is optimally excited at 421 nm by the Violet laser (405 nm) and has an emission maximum of 613 nm.





### **Novus Biologicals USA**

10730 E. Briarwood Avenue  
Centennial, CO 80112  
USA  
Phone: 303.730.1950  
Toll Free: 1.888.506.6887  
Fax: 303.730.1966  
nb-customerservice@bio-techne.com

### **Bio-Techne Canada**

21 Canmotor Ave  
Toronto, ON M8Z 4E6  
Canada  
Phone: 905.827.6400  
Toll Free: 855.668.8722  
Fax: 905.827.6402  
canada.inquires@bio-techne.com

### **Bio-Techne Ltd**

19 Barton Lane  
Abingdon Science Park  
Abingdon, OX14 3NB, United Kingdom  
Phone: (44) (0) 1235 529449  
Free Phone: 0800 37 34 15  
Fax: (44) (0) 1235 533420  
info.EMEA@bio-techne.com

### **General Contact Information**

www.novusbio.com  
Technical Support: nb-technical@bio-techne.com  
Orders: nb-customerservice@bio-techne.com  
General: novus@novusbio.com

### **Products Related to NB110-96887MFV610**

---

210-TA-005	TNF-alpha [Unconjugated]
236-EG-200	EGF [Unconjugated]
AF467	EphB2 Antibody [Unconjugated]
AF887	AKT [p Ser473] Antibody - Pan Specific

---

### **Limitations**

This product is for research use only and is not approved for use in humans or in clinical diagnosis. Primary Antibodies are guaranteed for 1 year from date of receipt.

For more information on our 100% guarantee, please visit [www.novusbio.com/guarantee](http://www.novusbio.com/guarantee)

Earn gift cards/discounts by submitting a review: [www.novusbio.com/reviews/submit/NB110-96887MFV610](http://www.novusbio.com/reviews/submit/NB110-96887MFV610)

Earn gift cards/discounts by submitting a publication using this product:  
[www.novusbio.com/publications](http://www.novusbio.com/publications)

