

# Product Datasheet

## p23/PTGES3 Antibody (JJ6)

### NB110-96879

Unit Size: 0.1 mg

Store at 4C short term. Aliquot and store at -20C long term. Avoid freeze-thaw cycles.

[www.novusbio.com](http://www.novusbio.com)



[technical@novusbio.com](mailto:technical@novusbio.com)

Protocols, Publications, Related Products, Reviews, Research Tools and Images at:  
[www.novusbio.com/NB110-96879](http://www.novusbio.com/NB110-96879)

Updated 1/13/2025 v.20.1

Earn rewards for product  
reviews and publications.

Submit a publication at [www.novusbio.com/publications](http://www.novusbio.com/publications)

Submit a review at [www.novusbio.com/reviews/destination/NB110-96879](http://www.novusbio.com/reviews/destination/NB110-96879)



**NB110-96879**

p23/PTGES3 Antibody (JJ6)

<b>Product Information</b>	
<b>Unit Size</b>	0.1 mg
<b>Concentration</b>	1 mg/ml
<b>Storage</b>	Store at 4C short term. Aliquot and store at -20C long term. Avoid freeze-thaw cycles.
<b>Clonality</b>	Monoclonal
<b>Clone</b>	JJ6
<b>Preservative</b>	0.09% Sodium Azide
<b>Isotype</b>	IgG1
<b>Purity</b>	Protein G purified
<b>Buffer</b>	PBS, 50% Glycerol
<b>Product Description</b>	
<b>Host</b>	Mouse
<b>Gene ID</b>	10728
<b>Gene Symbol</b>	PTGES3
<b>Species</b>	Human, Mouse, Chicken, Guinea Pig, Rabbit, Yeast
<b>Specificity/Sensitivity</b>	Detects approx 23kDa.
<b>Immunogen</b>	Recombinant human full length p23 protein
<b>Product Application Details</b>	
<b>Applications</b>	Western Blot, ELISA, Immunocytochemistry/ Immunofluorescence, Immunohistochemistry, Immunoprecipitation, Microarray
<b>Recommended Dilutions</b>	Western Blot 1:2000, ELISA, Immunohistochemistry, Immunocytochemistry/ Immunofluorescence 1:100, Immunoprecipitation, Microarray
<b>Application Notes</b>	0.5 ug/ml of p23 Antibody was sufficient for detection of p23 in 20 ug of heat shocked cell lysate by colorimetric immunoblot analysis using Goat anti-mouse IgG:HRP as the secondary Antibody.

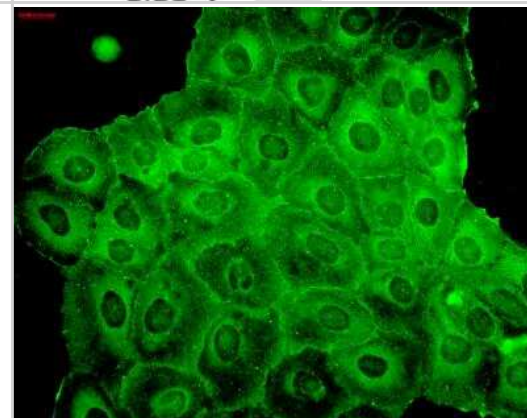
## Images

**Western Blot:** p23/PTGES3 Antibody (JJ6) [NB110-96879] - Western Blot analysis of Human Cell lysates showing detection of p23/PTGES3 protein using Mouse Anti-p23/PTGES3 Monoclonal Antibody, Clone JJ6 (NB110-96879). Load: 15 ug. Block: 1.5% BSA for 30 minutes at RT. Primary Antibody: Mouse Anti-p23/PTGES3 Monoclonal Antibody (NB110-96879) at 1:1000 for 2 hours at RT. Secondary Antibody: Sheep Anti-Mouse IgG: HRP for 1 hour at RT.

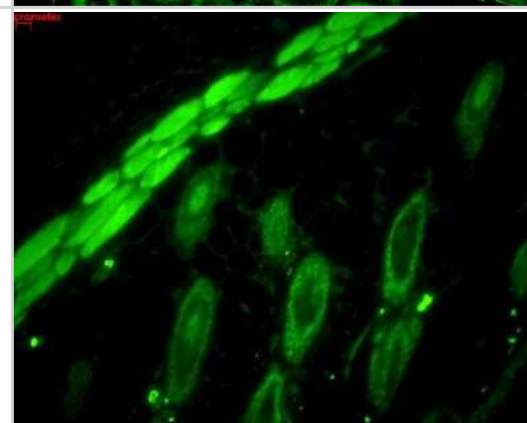
37.81 →  
23.27 →  
18.19 →  
14.17 →  
9.50 →



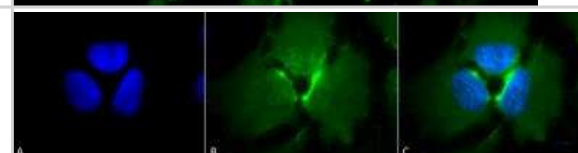
**Immunocytochemistry/Immunofluorescence:** p23/PTGES3 Antibody (JJ6) [NB110-96879] - Tissue: HaCaT cells. Species: Human. Fixation: Cold 100% methanol at -20C for 10 minutes. Primary Antibody at 1:100 for 1 hour at RT. Secondary Antibody: FITC Goat Anti-Mouse (green) at 1:50 for 1 hour at RT. Localization: Uniform epidermal staining -some evidence of cell-cell borders. Image courtesy of Dr. Turksen, Ottawa Hospital Research Institute, Canada.



**Immunohistochemistry:** p23/PTGES3 Antibody (JJ6) [NB110-96879] - Immunohistochemistry analysis using Mouse Anti-p23/PTGES3 Monoclonal Antibody, Clone JJ6 (NB110-96879). Tissue: backskin. Species: Mouse. Fixation: Bouin's Fixative and paraffin-embedded. Primary Antibody: Mouse Anti-p23/PTGES3 Monoclonal Antibody (NB110-96879) at 1:100 for 1 hour at RT. Secondary Antibody: FITC Goat Anti-Mouse (green) at 1:50 for 1 hour at RT. Localization: Epidermal, dermal, HF, muscle staining. Bright dermal staining.



**Immunocytochemistry/Immunofluorescence:** p23/PTGES3 Antibody (JJ6) [NB110-96879] - Tissue: Heat Shocked HeLa Cells. Species: Human. Fixation: 2% Formaldehyde for 20 min at RT. Primary Antibody at 1:100 for 12 hours at 4C. Secondary Antibody: FITC Goat Anti-Mouse (green) at 1:200 for 120 min at RT. Counterstain: DAPI (blue) nuclear stain at 1:40000 for 120 min at RT. Localization: Cytoplasm. Magnification: 100x. (A) DAPI (blue) nuclear stain (B) Anti-p23 Antibody (C) Composite.





### **Novus Biologicals USA**

10730 E. Briarwood Avenue  
Centennial, CO 80112  
USA  
Phone: 303.730.1950  
Toll Free: 1.888.506.6887  
Fax: 303.730.1966  
nb-customerservice@bio-techne.com

### **Bio-Techne Canada**

21 Canmotor Ave  
Toronto, ON M8Z 4E6  
Canada  
Phone: 905.827.6400  
Toll Free: 855.668.8722  
Fax: 905.827.6402  
canada.inquires@bio-techne.com

### **Bio-Techne Ltd**

19 Barton Lane  
Abingdon Science Park  
Abingdon, OX14 3NB, United Kingdom  
Phone: (44) (0) 1235 529449  
Free Phone: 0800 37 34 15  
Fax: (44) (0) 1235 533420  
info.EMEA@bio-techne.com

### **General Contact Information**

www.novusbio.com  
Technical Support: nb-technical@bio-  
techne.com  
Orders: nb-customerservice@bio-techne.com  
General: novus@novusbio.com

### **Limitations**

This product is for research use only and is not approved for use in humans or in clinical diagnosis. Primary Antibodies are guaranteed for 1 year from date of receipt.

For more information on our 100% guarantee, please visit [www.novusbio.com/guarantee](http://www.novusbio.com/guarantee)

Earn gift cards/discounts by submitting a review: [www.novusbio.com/reviews/submit/NB110-96879](http://www.novusbio.com/reviews/submit/NB110-96879)

Earn gift cards/discounts by submitting a publication using this product:  
[www.novusbio.com/publications](http://www.novusbio.com/publications)

