

Product Datasheet

S1P1/EDG-1 Antibody (MM0045-21L9) - Azide and BSA Free NB110-93513-0.025mg

Unit Size: 0.025 mg

Aliquot and store at -20C or -80C. Avoid freeze-thaw cycles.

www.novusbio.com



technical@novusbio.com

Publications: 3

Protocols, Publications, Related Products, Reviews, Research Tools and Images at:
www.novusbio.com/NB110-93513

Updated 4/24/2025 v.20.1

Earn rewards for product
reviews and publications.

Submit a publication at www.novusbio.com/publications

Submit a review at www.novusbio.com/reviews/destination/NB110-93513



NB110-93513-0.025mg

S1P1/EDG-1 Antibody (MM0045-21L9) - Azide and BSA Free

Product Information	
Unit Size	0.025 mg
Concentration	LYOPH mg/ml
Storage	Aliquot and store at -20C or -80C. Avoid freeze-thaw cycles.
Clonality	Monoclonal
Clone	MM0045-21L9
Preservative	No Preservative
Reconstitution Instructions	Reconstitute with sterilized PBS to a final concentration of 0.2 mg/ml.
Isotype	IgG1
Purity	Protein G purified
Buffer	Lyophilized from a 0.2 um filtered solution in PBS. 0.025 mg size is provided in liquid form, PBS

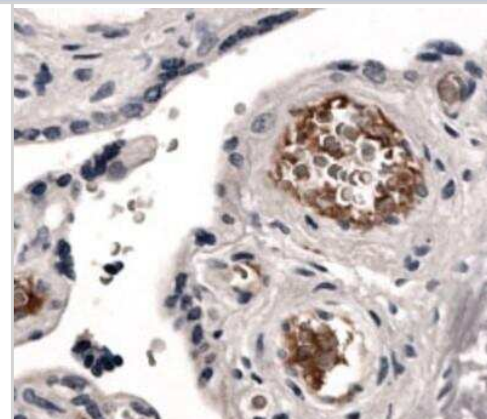
Product Description	
Host	Mouse
Gene ID	1901
Gene Symbol	S1PR1
Species	Human
Immunogen	Human recombinant S1P1/EDG-1

Product Application Details	
Applications	Western Blot, Flow Cytometry, Immunocytochemistry/ Immunofluorescence, Immunohistochemistry, Immunohistochemistry-Paraffin, CyTOF-ready
Recommended Dilutions	Western Blot 1:100-1:1000, Flow Cytometry 1:50-1:200, Immunohistochemistry 1:10-1:500, Immunocytochemistry/ Immunofluorescence, Immunohistochemistry-Paraffin 1:50, CyTOF-ready
Application Notes	This antibody is Cytof ready. Use in Immunocytochemistry/Immunofluorescence reported in scientific literature (PMID:32355561).

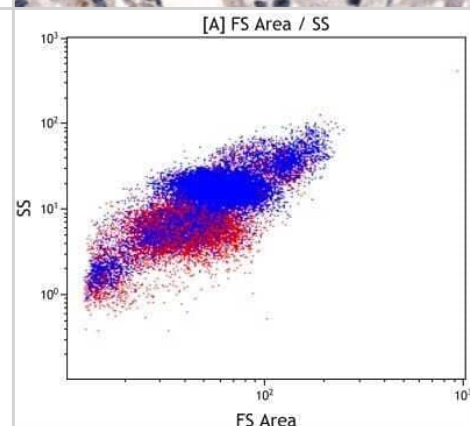


Images

Immunohistochemistry-Paraffin: S1P1/EDG-1 Antibody (MM0045-21L9) [NB110-93513] - Normal Human Placenta Tissue



Flow Cytometry: S1P1/EDG-1 Antibody (MM0045-21L9) [NB110-93513] - Analysis using the Alexa Fluor (R) 488 conjugate of NB110-93513. Staining of S1P1 in white blood cells from human blood using anti-S1P1 antibody. Image from verified customer review.



Publications

Gray N, Limberg MM, Wiebe D et al. Differential Upregulation and Functional Activity of S1PR1 in Human Peripheral Blood Basophils of Atopic Patients International journal of molecular sciences 2022-12-17 [PMID: 36555755] (ICC/IF, Human)

Marsh-Wakefield F, Ashhurst T, Trend S et al. IgG3+ B cells are associated with the development of multiple sclerosis Clin Transl Immunology 2020-05-01 [PMID: 32355561] (ICC/IF, Human)

Patrussi L, Capitani N, Olivieri C et al. p66Shc deficiency in the Eu-TCL1 mouse model of chronic lymphocytic leukemia enhances leukemogenesis by altering the chemokine receptor landscape Haematologica 2019-02-28 [PMID: 30819907] (FLOW, Human)



Novus Biologicals USA

10730 E. Briarwood Avenue
Centennial, CO 80112
USA
Phone: 303.730.1950
Toll Free: 1.888.506.6887
Fax: 303.730.1966
nb-customerservice@bio-techne.com

Bio-Techne Canada

21 Canmotor Ave
Toronto, ON M8Z 4E6
Canada
Phone: 905.827.6400
Toll Free: 855.668.8722
Fax: 905.827.6402
canada.inquires@bio-techne.com

Bio-Techne Ltd

19 Barton Lane
Abingdon Science Park
Abingdon, OX14 3NB, United Kingdom
Phone: (44) (0) 1235 529449
Free Phone: 0800 37 34 15
Fax: (44) (0) 1235 533420
info.EMEA@bio-techne.com

General Contact Information

www.novusbio.com
Technical Support: nb-technical@bio-techne.com
Orders: nb-customerservice@bio-techne.com
General: novus@novusbio.com

Limitations

This product is for research use only and is not approved for use in humans or in clinical diagnosis. Primary Antibodies are guaranteed for 1 year from date of receipt.

For more information on our 100% guarantee, please visit www.novusbio.com/guarantee

Earn gift cards/discounts by submitting a review: www.novusbio.com/reviews/submit/NB110-93513

Earn gift cards/discounts by submitting a publication using this product:
www.novusbio.com/publications

