

Product Datasheet

GluR1 [p Ser831] Antibody - Azide Free NB110-93482

Unit Size: 0.15 ml

Store at -20C. Avoid freeze-thaw cycles.

www.novusbio.com



technical@novusbio.com

Protocols, Publications, Related Products, Reviews, Research Tools and Images at:
www.novusbio.com/NB110-93482

Updated 9/9/2025 v.20.1

Earn rewards for product
reviews and publications.

Submit a publication at www.novusbio.com/publications

Submit a review at www.novusbio.com/reviews/destination/NB110-93482



NB110-93482

GluR1 [p Ser831] Antibody - Azide Free

Product Information

Unit Size	0.15 ml
Concentration	Please see the vial label for concentration. If unlisted please contact technical services.
Storage	Store at -20C. Avoid freeze-thaw cycles.
Clonality	Polyclonal
Preservative	No Preservative
Isotype	IgG
Purity	Antigen Affinity-purified
Buffer	10mM HEPES (pH 7.5), 0.15M NaCl, 0.1 mg/ml BSA and 50% Glycerol
Target Molecular Weight	100 kDa

Product Description

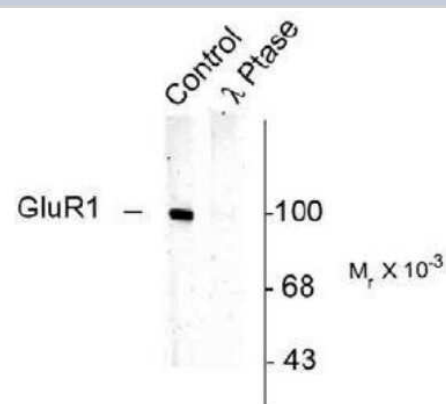
Description	Novus Biologicals Rabbit GluR1 [p Ser831] Antibody - Azide Free (NB110-93482) is a polyclonal antibody validated for use in WB. All Novus Biologicals antibodies are covered by our 100% guarantee.
Host	Rabbit
Gene ID	2890
Gene Symbol	GRIA1
Species	Human, Mouse, Rat
Reactivity Notes	Tested in Rat. Reactivity assumed based on 100% sequence identity: Canine, Chicken, Human and Mouse.
Specificity/Sensitivity	Specific for endogenous levels of the ~100 kDa GluR1 protein phosphorylated at Ser831. Immunolabeling is completely eliminated by treatment with lambda-phosphatase.
Immunogen	Synthetic phospho-peptide corresponding to amino acid residues surrounding Ser831 conjugated to KLH. Accession # P19490

Product Application Details

Applications	Western Blot
Recommended Dilutions	Western Blot 1:1000

Images

Western Blot: Glutamate Receptor 1 [p Ser831] Antibody [NB110-93482] - Western blot of rat hippocampal lysate showing specific immunolabeling of the ~100k GluR1 protein phosphorylated at Ser831 (Control). The phosphospecificity of this labeling is shown in the second lane (lambda-phosphatase). The blot is identical to the control except that it was incubated (1200 units for 30 min) before being exposed to the GluR1 Ser831 antibody. The immunolabeling is completely eliminated by treatment with lambda-phosphatase.





Novus Biologicals USA

10730 E. Briarwood Avenue
Centennial, CO 80112
USA
Phone: 303.730.1950
Toll Free: 1.888.506.6887
Fax: 303.730.1966
nb-customerservice@bio-techne.com

Bio-Techne Canada

21 Canmotor Ave
Toronto, ON M8Z 4E6
Canada
Phone: 905.827.6400
Toll Free: 855.668.8722
Fax: 905.827.6402
canada.inquires@bio-techne.com

Bio-Techne Ltd

19 Barton Lane
Abingdon Science Park
Abingdon, OX14 3NB, United Kingdom
Phone: (44) (0) 1235 529449
Free Phone: 0800 37 34 15
Fax: (44) (0) 1235 533420
info.EMEA@bio-techne.com

General Contact Information

www.novusbio.com
Technical Support: nb-technical@bio-techne.com
Orders: nb-customerservice@bio-techne.com
General: novus@novusbio.com

Products Related to NB110-93482

HAF008	Goat anti-Rabbit IgG Secondary Antibody [HRP]
NB7160	Goat anti-Rabbit IgG (H+L) Secondary Antibody [HRP]
NBP2-24891	Rabbit IgG Isotype Control
H00002890-Q01-10ug	Recombinant Human GluR1 GST (N-Term) Protein

Limitations

This product is for research use only and is not approved for use in humans or in clinical diagnosis. Primary Antibodies are guaranteed for 1 year from date of receipt.

For more information on our 100% guarantee, please visit www.novusbio.com/guarantee

Earn gift cards/discounts by submitting a review: www.novusbio.com/reviews/submit/NB110-93482

Earn gift cards/discounts by submitting a publication using this product:
www.novusbio.com/publications

