

Product Datasheet

Mesothelin Antibody (MB-G10) - BSA Free NB110-85538

Unit Size: 0.1 mg

Store at -20C. Avoid freeze-thaw cycles.

www.novusbio.com



technical@novusbio.com

Publications: 3

Protocols, Publications, Related Products, Reviews, Research Tools and Images at:
www.novusbio.com/NB110-85538

Updated 2/21/2025 v.20.1

Earn rewards for product
reviews and publications.

Submit a publication at www.novusbio.com/publications

Submit a review at www.novusbio.com/reviews/destination/NB110-85538



NB110-85538

Mesothelin Antibody (MB-G10) - BSA Free

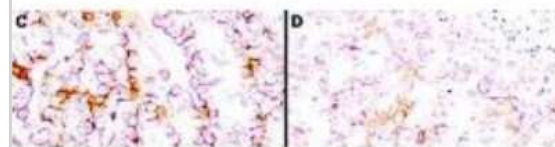
Product Information	
Unit Size	0.1 mg
Concentration	Please see the vial label for concentration. If unlisted please contact technical services.
Storage	Store at -20C. Avoid freeze-thaw cycles.
Clonality	Monoclonal
Clone	MB-G10
Preservative	0.01% Sodium Azide
Isotype	IgG2a
Purity	Protein A purified
Buffer	0.02 M Potassium Phosphate, 0.15 M Sodium Chloride, pH 7.2
Product Description	
Description	<p>This product was purified from tissue culture supernatant fluid by Protein A chromatography</p> <p>Store antibody at -20C prior to opening. Aliquot contents and freeze at -20C or below for extended storage. Avoid cycles of freezing and thawing. Centrifuge product if not completely clear after standing at room temperature. This product is stable for several weeks at 4C as an undiluted liquid. Dilute only prior to immediate use.</p>
Host	Mouse
Gene ID	10232
Gene Symbol	MSLN
Species	Human
Reactivity Notes	Cross reactivity with homologues from other sources has not been tested
Immunogen	This Mesothelin Antibody (MB-G10) was produced in mesothelin-deficient mice by immunizations with plasmid cDNA encoding human Mesothelin full length protein followed by a single boost of a recombinant human mesothelin-Fc fusion protein. (Uniprot: Q13421)
Product Application Details	
Applications	Western Blot, ELISA, Flow Cytometry, Immunohistochemistry, Immunohistochemistry-Paraffin, SDS-Page
Recommended Dilutions	Western Blot 1:1000, Flow Cytometry, ELISA 1:10000-1:50000, Immunohistochemistry 1:100, Immunohistochemistry-Paraffin 1:100, SDS-Page
Application Notes	This antibody has been tested for use in immunohistochemistry and western blotting. Specific conditions for reactivity should be optimized by the end user. Expect a band approximately 40 kDa in size corresponding to mature mesothelin by western blotting in the appropriate cell lysate or extract. For Anti-mesothelin immunohistochemistry, archival PEFF human tissues were deparaffinized followed by hydration. Antigen-retrieval is recommended. Block tissues with 1% BSA in PBS for 30 min at 23C. Antibodies are diluted in 1% BSA and reacted with tissue for 60 min at room temperature.

Images

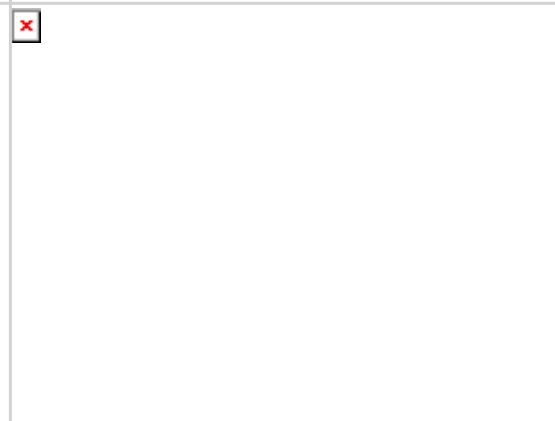
Western Blot: Mesothelin Antibody (MB-G10) [NB110-85538] - Western blotting using Mesothelin antibody (MB-G10). Load: Mesothelin-Fc (lane 1, 100 ng; lane 2, 25 ng; lane 3, 6 ng; lane 4, 2 ng; and lane 5, 0.4 ng) and CD25-Fc (lane 6, 50 ng) Primary antibody: anti-Mesothelin at 1mg/ml. Secondary Antibody: ALP goat anti-mouse IgG and BCIP/NBT substrate.



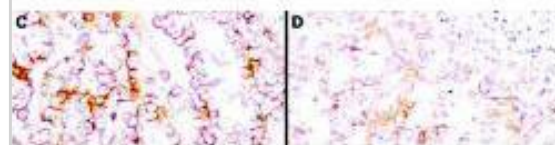
Immunohistochemistry: Mesothelin Antibody (MB-G10) [NB110-85538] - Immunohistochemistry using Mesothelin antibody (MB-G10) to react with two epitopes on Mesothelin in PEFF human mesothelioma tissue sections treated by antigen retrieval methods. Anti-Mesothelin primary antibodies were used at 10 ug/mL to label these sections as follows: C, MAb MB; and D, MAb MN followed by goat anti-mouse IgG conjugated to Equineradish peroxidase at 25 ug/mL in 1% BSA/PBS for 30 minutes. (magnification, x200; bar, 50 um). Reprinted with permission from Clin.Cancer Res. 11(16):5840-6.



SDS-Page: Mesothelin Antibody (MB-G10) [NB110-85538] - SDS-PAGE of Mesothelin antibody (MB-G10). Lane 1: Non-Reduced Mesothelin antibody (MB-G10). Lane M: 3 uL OPAL Pre-stained Marker. Lane 2: Reduced Mesothelin antibody (MB-G10). Load: 1 ug per lane. Predicted/Observed size: Non-reduced at 160 kDa; Reduced at 55, 25 kDa.



Immunohistochemistry using anti-mesothelin antibody to react with two epitopes on mesothelin in PEFF human mesothelioma tissue sections treated by antigen retrieval methods. Anti-mesothelin primary antibodies were used at 10 ug/mL to label these sections as follows: C, MAb MB; and D, MAb MN followed by goat anti-mouse IgG conjugated to horseradish peroxidase at 25 ug/mL in 1% BSA/PBS for 30 minutes. (magnification, x200; bar, 50 um). Reprinted with permission from Clin.Cancer Res. 11(16):5840-6.



Publications

Maselli D, Matos RS, Johnson RD et al. Porcine Organotypic Epicardial Slice Protocol: A Tool for the Study of Epicardium in Cardiovascular Research *Frontiers in cardiovascular medicine* 2022-07-18 [PMID: 35924218] (IHC-P, WB, Porcine)

Details:

Dilution: 1:100

Ho M, Bera TK, Willingham MC et al. Mesothelin expression in human lung cancer. *Clin Cancer Res* 2007-03-01 [PMID: 17332303]

Onda M, Willingham M, Nagata S et al. New monoclonal antibodies to mesothelin useful for immunohistochemistry, fluorescence-activated cell sorting, Western blotting, and ELISA. *Clin Cancer Res* 2005-08-01 [PMID: 16115924]





Novus Biologicals USA

10730 E. Briarwood Avenue
Centennial, CO 80112
USA
Phone: 303.730.1950
Toll Free: 1.888.506.6887
Fax: 303.730.1966
nb-customerservice@bio-techne.com

Bio-Techne Canada

21 Canmotor Ave
Toronto, ON M8Z 4E6
Canada
Phone: 905.827.6400
Toll Free: 855.668.8722
Fax: 905.827.6402
canada.inquires@bio-techne.com

Bio-Techne Ltd

19 Barton Lane
Abingdon Science Park
Abingdon, OX14 3NB, United Kingdom
Phone: (44) (0) 1235 529449
Free Phone: 0800 37 34 15
Fax: (44) (0) 1235 533420
info.EMEA@bio-techne.com

General Contact Information

www.novusbio.com
Technical Support: nb-technical@bio-techne.com
Orders: nb-customerservice@bio-techne.com
General: novus@novusbio.com

Products Related to NB110-85538

HAF007	Goat anti-Mouse IgG Secondary Antibody [HRP]
NB720-B	Rabbit anti-Mouse IgG (H+L) Secondary Antibody [Biotin]
NBP1-96778	Mouse IgG2a Isotype Control (M2A)
NBP1-88224PEP	Mesothelin Recombinant Protein Antigen

Limitations

This product is for research use only and is not approved for use in humans or in clinical diagnosis. Primary Antibodies are guaranteed for 1 year from date of receipt.

For more information on our 100% guarantee, please visit www.novusbio.com/guarantee

Earn gift cards/discounts by submitting a review: www.novusbio.com/reviews/submit/NB110-85538

Earn gift cards/discounts by submitting a publication using this product:
www.novusbio.com/publications

