

Product Datasheet

Fibroblast Activation Protein alpha/FAP Antibody [Janelia Fluor® 635] NB110-85534JF635

Unit Size: 0.1 ml

Store at 4C in the dark.

www.novusbio.com



technical@novusbio.com

Protocols, Publications, Related Products, Reviews, Research Tools and Images at:
www.novusbio.com/NB110-85534JF635

Updated 12/12/2024 v.20.1

Earn rewards for product reviews and publications.

Submit a publication at www.novusbio.com/publications

Submit a review at www.novusbio.com/reviews/destination/NB110-85534JF635



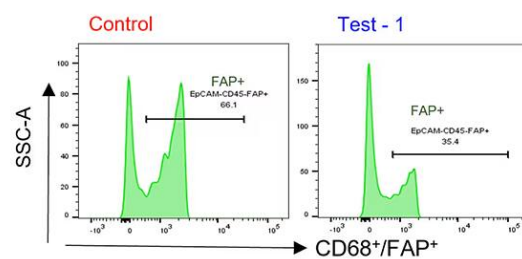
NB110-85534JF635

Fibroblast Activation Protein alpha/FAP Antibody [Janelia Fluor® 635]

Product Information	
Unit Size	0.1 ml
Concentration	Please see the vial label for concentration. If unlisted please contact technical services.
Storage	Store at 4C in the dark.
Clonality	Polyclonal
Preservative	0.05% Sodium Azide
Isotype	IgG
Conjugate	Janelia Fluor 635
Purity	Immunogen affinity purified
Buffer	50mM Sodium Borate
Product Description	
Host	Rabbit
Gene ID	2191
Gene Symbol	FAP
Species	Human, Mouse
Reactivity Notes	A BLAST analysis was used to suggest partial cross-reactivity with Fibroblast Activation Protein alpha/FAP from human and rat sources based on ~88% homology with the immunizing sequence. Reactivity with Fibroblast Activation Protein alpha/FAP from other sources has not been determined. Human reactivity reported from a verified customer review.
Immunogen	This affinity purified Fibroblast Activation Protein alpha/FAP Antibody was prepared from whole rabbit serum produced by repeated immunizations with a synthetic peptide corresponding to an internal region of mouse Fibroblast Activation Protein alpha/Fibroblast Activation Protein alpha/FAP protein. (Uniprot: P97321)
Notes	Sold under license from the Howard Hughes Medical Institute, Janelia Research Campus.
Product Application Details	
Applications	Western Blot, ELISA, Flow Cytometry
Recommended Dilutions	Western Blot, Flow Cytometry Validated for Flow Cytometry from a verified customer review., ELISA
Application Notes	Optimal dilution of this antibody should be experimentally determined.

Images

Flow Cytometry: Fibroblast Activation Protein alpha/FAP Antibody [Janelia Fluor® 635] [NB110-85534JF635] - Specific co-culture system created to study human macrophage cancer cells' conduction of MMT process, and Fibroblast Activation Protein alpha/FAP Antibody [Alexa Fluor® 488] (Catalog # NB110-85534AF488) was used as a myo-CAFs marker. Image from a verified customer review.





Novus Biologicals USA

10730 E. Briarwood Avenue
Centennial, CO 80112
USA
Phone: 303.730.1950
Toll Free: 1.888.506.6887
Fax: 303.730.1966
nb-customerservice@bio-techne.com

Bio-Techne Canada

21 Canmotor Ave
Toronto, ON M8Z 4E6
Canada
Phone: 905.827.6400
Toll Free: 855.668.8722
Fax: 905.827.6402
canada.inquires@bio-techne.com

Bio-Techne Ltd

19 Barton Lane
Abingdon Science Park
Abingdon, OX14 3NB, United Kingdom
Phone: (44) (0) 1235 529449
Free Phone: 0800 37 34 15
Fax: (44) (0) 1235 533420
info.EMEA@bio-techne.com

General Contact Information

www.novusbio.com
Technical Support: nb-technical@bio-
techne.com
Orders: nb-customerservice@bio-techne.com
General: novus@novusbio.com

Limitations

This product is for research use only and is not approved for use in humans or in clinical diagnosis. Primary Antibodies are guaranteed for 1 year from date of receipt.

For more information on our 100% guarantee, please visit www.novusbio.com/guarantee

Earn gift cards/discounts by submitting a review: www.novusbio.com/reviews/submit/NB110-85534JF635

Earn gift cards/discounts by submitting a publication using this product:
www.novusbio.com/publications

