

# Product Datasheet

## CEBP Delta Antibody - BSA Free NB110-85519

Unit Size: 0.1 mg

Store at -20C short term. Aliquot and store at -80C long term. Avoid freeze-thaw cycles.

[www.novusbio.com](http://www.novusbio.com)



[technical@novusbio.com](mailto:technical@novusbio.com)

**Reviews: 1 Publications: 2**

Protocols, Publications, Related Products, Reviews, Research Tools and Images at:  
[www.novusbio.com/NB110-85519](http://www.novusbio.com/NB110-85519)

Updated 2/21/2025 v.20.1

**Earn rewards for product  
reviews and publications.**

Submit a publication at [www.novusbio.com/publications](http://www.novusbio.com/publications)

Submit a review at [www.novusbio.com/reviews/destination/NB110-85519](http://www.novusbio.com/reviews/destination/NB110-85519)



**NB110-85519**

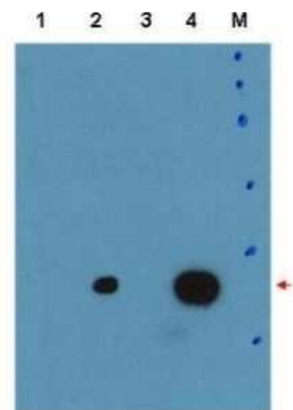
CEBP Delta Antibody - BSA Free

<b>Product Information</b>	
<b>Unit Size</b>	0.1 mg
<b>Concentration</b>	Please see the vial label for concentration. If unlisted please contact technical services.
<b>Storage</b>	Store at -20C short term. Aliquot and store at -80C long term. Avoid freeze-thaw cycles.
<b>Clonality</b>	Polyclonal
<b>Preservative</b>	0.01% Sodium Azide
<b>Isotype</b>	IgG
<b>Purity</b>	Immunogen affinity purified
<b>Buffer</b>	0.02 M Potassium Phosphate, 0.15 M Sodium Chloride, pH 7.2
<b>Product Description</b>	
<b>Description</b>	This product was affinity purified from monospecific antiserum by immunoaffinity chromatography  Store vial at -20C prior to opening. Aliquot contents and freeze at -20C or below for extended storage. Avoid cycles of freezing and thawing. Centrifuge product if not completely clear after standing at room temperature. This product is stable for several weeks at 4C as an undiluted liquid. Dilute only prior to immediate use.
<b>Host</b>	Rabbit
<b>Gene ID</b>	1052
<b>Gene Symbol</b>	CEBPD
<b>Species</b>	Mouse
<b>Reactivity Notes</b>	A BLAST analysis was used to suggest cross-reactivity with CEBP Delta from human sources based on 77% homology with the immunizing sequence. No cross-reactivity is observed with mouse C/EBPa or C/EBPb. Reactivity with CEBP Delta from other sources has not been determined.
<b>Specificity/Sensitivity</b>	This antibody recognizes endogenous mouse and recombinant human C/EBP delta protein. A BLAST analysis was used to suggest cross-reactivity with CEBP Delta from human sources based on 77% homology with the immunizing sequence. No cross-reactivity is observed with mouse C/EBPa or C/EBPb. Reactivity with CEBP Delta from other sources has not been determined.
<b>Immunogen</b>	This affinity purified CEBP Delta Antibody was prepared from whole rabbit serum produced by repeated immunizations with a recombinant protein corresponding to the amino terminus of mouse CEBP Delta. (Uniprot: Q00322)
<b>Product Application Details</b>	
<b>Applications</b>	Western Blot, ELISA, Immunohistochemistry, Immunoprecipitation, Knockdown Validated, Knockout Validated
<b>Recommended Dilutions</b>	Western Blot 1:1000-1:15000, ELISA 1:4000-1:9000, Immunohistochemistry 1:2000, Immunoprecipitation 0.8-1.5 ug/ml, Knockout Validated, Knockdown Validated
<b>Application Notes</b>	This affinity purified antibody has been tested for use in ELISA, western blotting, and suitable in IHC. Specific conditions for reactivity should be optimized by the end user. Expect a band approximately 35 kDa in size corresponding to C/EBPd by western blotting in the appropriate cell lysate or extract. The predicted molecular weight of mouse C/EBPd is 28.8 kDa. This antibody is capable of detecting both over-expressed and endogenous C/EBPd.

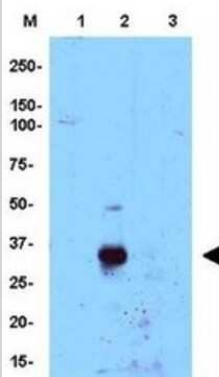


## Images

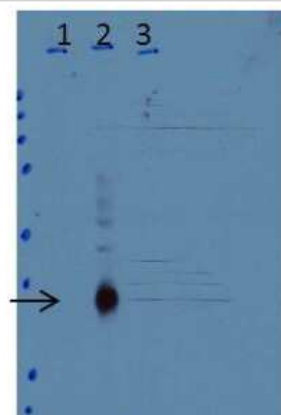
Western Blot: CEBP Delta Antibody [NB110-85519] - Lane 1: Human C/EBPbeta. Lane 2: Mouse C/EBPdelta. Lane 3: untransfected. Lane 4: Human C/EBPdelta. 35 ug per lane. Primary: Anti-C/EBPd antibody at 1:15k overnight at 4C. Blocking: buffer TBST ECL was used for detection of overexpressed protein in human and mouse C/EBP delta. Predicted/Observed size: 28.8 kDa, 35 kDa.



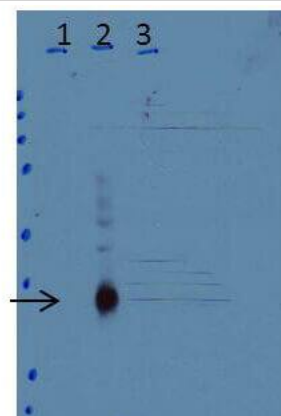
Western Blot: CEBP Delta Antibody [NB110-85519] - Detection of endogenous protein in whole cell extracts from mouse macrophage cells. Untreated WT cells (Lane 1), WT cells treated 3 hrs with LPS (Lane 2) and knock-out cells treated 3 hrs with LPS (Lane 3). The band at ~35 kDa, indicated by the arrowhead, corresponds to the expected molecular weight of endogenous C/EBP delta. Primary antibody at 1:15,000. ECL was used for detection.



Western Blot: CEBP Delta Antibody [NB110-85519] - Lane 1: untreated wild-type (WT) cells. Lane 2: WT cells treated 3 hrs with LPS. Lane 3: C/EBPd-knock-out cells treated 3 hrs with LPS. 35 ug per lane. Primary: anti-C/EBPd antibody at 1:15k overnight at 4C. Blocking: buffer TBST ECL was used for detection of endogenous protein in whole cell extracts from mouse primary macrophage cells. Predicted/Observed size: 28.8 kDa, 35 kDa.



Western Blot of Anti-C/EBPd Antibody. Lane 1: untreated wild-type (WT) cells. Lane 2: WT cells treated 3 h with LPS. Lane 3: C/EBPd-knock-out cells treated 3H with LPS. Load: 35 ug per lane. Primary: CEBP Delta Antibody used at a dilution of 1:15k overnight at 4C. Blocking: buffer TBST. ECL was used for detection of endogenous protein in whole cell extracts from mouse primary macrophage cells. Predicted/Observed size: 28.8 kDa, ~35 kDa.



## Publications

Kim D, Nam H, Lee W et al. PKCa-LSD1-NF-kB-Signaling Cascade Is Crucial for Epigenetic Control of the Inflammatory Response *Molecular Cell* 2018-01-01 [PMID: 29395062] (Mouse)

Wang YW, Kuo CF et al. 2,4,5-trimethoxybenzaldehyde, a bitter principle in plants, suppresses adipogenesis through the regulation of ERK1.. *J Agric Food Chem.* 2014-10-08 [PMID: 25222709] (WB, Mouse)





### **Novus Biologicals USA**

10730 E. Briarwood Avenue  
Centennial, CO 80112  
USA  
Phone: 303.730.1950  
Toll Free: 1.888.506.6887  
Fax: 303.730.1966  
nb-customerservice@bio-techne.com

### **Bio-Techne Canada**

21 Canmotor Ave  
Toronto, ON M8Z 4E6  
Canada  
Phone: 905.827.6400  
Toll Free: 855.668.8722  
Fax: 905.827.6402  
canada.inquires@bio-techne.com

### **Bio-Techne Ltd**

19 Barton Lane  
Abingdon Science Park  
Abingdon, OX14 3NB, United Kingdom  
Phone: (44) (0) 1235 529449  
Free Phone: 0800 37 34 15  
Fax: (44) (0) 1235 533420  
info.EMEA@bio-techne.com

### **General Contact Information**

www.novusbio.com  
Technical Support: nb-technical@bio-techne.com  
Orders: nb-customerservice@bio-techne.com  
General: novus@novusbio.com

### **Products Related to NB110-85519**

---

HAF008	Goat anti-Rabbit IgG Secondary Antibody [HRP]
NB7160	Goat anti-Rabbit IgG (H+L) Secondary Antibody [HRP]
NBP2-24891	Rabbit IgG Isotype Control
NBP2-56564PEP	CEBP Delta Recombinant Protein Antigen

---

### **Limitations**

This product is for research use only and is not approved for use in humans or in clinical diagnosis. Primary Antibodies are guaranteed for 1 year from date of receipt.

For more information on our 100% guarantee, please visit [www.novusbio.com/guarantee](http://www.novusbio.com/guarantee)

Earn gift cards/discounts by submitting a review: [www.novusbio.com/reviews/submit/NB110-85519](http://www.novusbio.com/reviews/submit/NB110-85519)

Earn gift cards/discounts by submitting a publication using this product:  
[www.novusbio.com/publications](http://www.novusbio.com/publications)

