

# Product Datasheet

## SHIP Antibody (SHIP-01) [mFluor Violet 610 SE] NB110-81538MFV610

Unit Size: 0.1 ml

Store at 4C in the dark.

[www.novusbio.com](http://www.novusbio.com)



[technical@novusbio.com](mailto:technical@novusbio.com)

Protocols, Publications, Related Products, Reviews, Research Tools and Images at:  
[www.novusbio.com/NB110-81538MFV610](http://www.novusbio.com/NB110-81538MFV610)

Updated 9/20/2023 v.20.1

Earn rewards for product  
reviews and publications.

Submit a publication at [www.novusbio.com/publications](http://www.novusbio.com/publications)

Submit a review at [www.novusbio.com/reviews/destination/NB110-81538MFV610](http://www.novusbio.com/reviews/destination/NB110-81538MFV610)



**NB110-81538MFV610**

SHIP Antibody (SHIP-01) [mFluor Violet 610 SE]

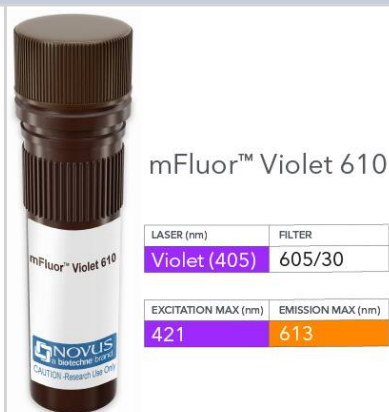
Product Information	
Unit Size	0.1 ml
Concentration	Please see the vial label for concentration. If unlisted please contact technical services.
Storage	Store at 4C in the dark.
Clonality	Monoclonal
Clone	SHIP-01
Preservative	0.05% Sodium Azide
Isotype	IgG2a
Conjugate	mFluor Violet 610 SE
Purity	Protein A purified
Buffer	50mM Sodium Borate

Product Description	
Host	Mouse
Gene ID	3635
Gene Symbol	INPP5D
Species	Human
Specificity/Sensitivity	The SHIP-01 reacts with SHIP-1, a phosphoinositide phosphatase largely confined to hematopoietic cells. Multiple forms of SHIP-1 have been reported with molecular weights of 110, 125, 130, 135 and 145 kDa.
Immunogen	Peptide corresponding to a sequence within N-terminal domain of Human SHIP-1.

Product Application Details	
Applications	Western Blot, Flow Cytometry, Flow (Intracellular), CyTOF-ready
Recommended Dilutions	Western Blot, Flow Cytometry, Flow (Intracellular), CyTOF-ready
Application Notes	Optimal dilution of this antibody should be experimentally determined.

**Images**

SHIP Antibody (SHIP-01) [mFluor Violet 610 SE] [NB110-81538MFV610]  
 - Vial of mFluor Violet 610 conjugated antibody. mFluor Violet 610 is optimally excited at 421 nm by the Violet laser (405 nm) and has an emission maximum of 613 nm.





### **Novus Biologicals USA**

10730 E. Briarwood Avenue  
Centennial, CO 80112  
USA  
Phone: 303.730.1950  
Toll Free: 1.888.506.6887  
Fax: 303.730.1966  
novus@novusbio.com

### **Bio-Techne Canada**

21 Canmotor Ave  
Toronto, ON M8Z 4E6  
Canada  
Phone: 905.827.6400  
Toll Free: 855.668.8722  
Fax: 905.827.6402  
canada.inquires@bio-techne.com

### **Bio-Techne Ltd**

19 Barton Lane  
Abingdon Science Park  
Abingdon, OX14 3NB, United Kingdom  
Phone: (44) (0) 1235 529449  
Free Phone: 0800 37 34 15  
Fax: (44) (0) 1235 533420  
info.EMEA@bio-techne.com

### **General Contact Information**

www.novusbio.com  
Technical Support: technical@novusbio.com  
Orders: orders@novusbio.com  
General: novus@novusbio.com

### **Products Related to NB110-81538MFV610**

---

NBP2-49633PEP	SHIP Recombinant Protein Antigen
D6050	IL-6 [HRP]
NBL1-12000	SHIP Overexpression Lysate
7268-CT-100	CTLA-4 [Unconjugated]

---

### **Limitations**

This product is for research use only and is not approved for use in humans or in clinical diagnosis. Primary Antibodies are guaranteed for 1 year from date of receipt.

For more information on our 100% guarantee, please visit [www.novusbio.com/guarantee](http://www.novusbio.com/guarantee)

Earn gift cards/discounts by submitting a review: [www.novusbio.com/reviews/submit/NB110-81538MFV610](http://www.novusbio.com/reviews/submit/NB110-81538MFV610)

Earn gift cards/discounts by submitting a publication using this product:  
[www.novusbio.com/publications](http://www.novusbio.com/publications)

