

Product Datasheet

Hepatic Sinusoidal Endothelial Cells Antibody (SE-1) [Alexa Fluor® 488] NB110-68095AF488

Unit Size: 0.1 ml

Store at 4C in the dark.

www.novusbio.com



technical@novusbio.com

Publications: 1

Protocols, Publications, Related Products, Reviews, Research Tools and Images at:
www.novusbio.com/NB110-68095AF488

Updated 10/23/2024 v.20.1

Earn rewards for product
reviews and publications.

Submit a publication at www.novusbio.com/publications

Submit a review at www.novusbio.com/reviews/destination/NB110-68095AF488



NB110-68095AF488**Hepatic Sinusoidal Endothelial Cells Antibody (SE-1) [Alexa Fluor® 488]**

Product Information	
Unit Size	0.1 ml
Concentration	Please see the vial label for concentration. If unlisted please contact technical services.
Storage	Store at 4C in the dark.
Clonality	Monoclonal
Clone	SE-1
Preservative	0.05% Sodium Azide
Isotype	IgG2a Kappa
Conjugate	Alexa Fluor 488
Purity	Protein A purified
Buffer	50mM Sodium Borate

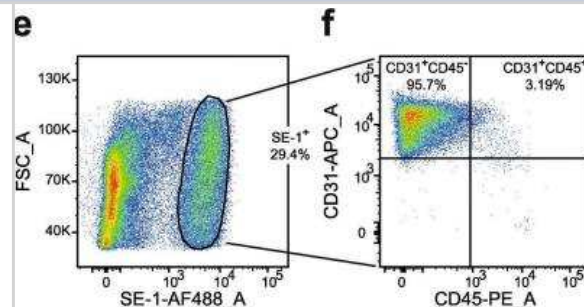
Product Description	
Host	Mouse
Species	Human, Mouse, Rat
Immunogen	Rat Hepatic Sinusoidal Endothelial Cells
Notes	Alexa Fluor (R) products are provided under an intellectual property license from Life Technologies Corporation. The purchase of this product conveys to the buyer the non-transferable right to use the purchased product and components of the product only in research conducted by the buyer (whether the buyer is an academic or for-profit entity). The sale of this product is expressly conditioned on the buyer not using the product or its components, or any materials made using the product or its components, in any activity to generate revenue, which may include, but is not limited to use of the product or its components: (i) in manufacturing; (ii) to provide a service, information, or data in return for payment; (iii) for therapeutic, diagnostic or prophylactic purposes; or (iv) for resale, regardless of whether they are resold for use in research. For information on purchasing a license to this product for purposes other than as described above, contact Life Technologies Corporation, 5791 Van Allen Way, Carlsbad, CA 92008 USA or outlicensing@lifetech.com. This conjugate is made on demand. Actual recovery may vary from the stated volume of this product. The volume will be greater than or equal to the unit size stated on the datasheet.

Product Application Details	
Applications	Western Blot, Flow Cytometry, Immunocytochemistry/ Immunofluorescence, Immunohistochemistry, Immunohistochemistry-Frozen, Immunohistochemistry-Paraffin
Recommended Dilutions	Western Blot, Flow Cytometry, Immunohistochemistry, Immunocytochemistry/ Immunofluorescence, Immunohistochemistry-Paraffin, Immunohistochemistry-Frozen
Application Notes	Optimal dilution of this antibody should be experimentally determined.

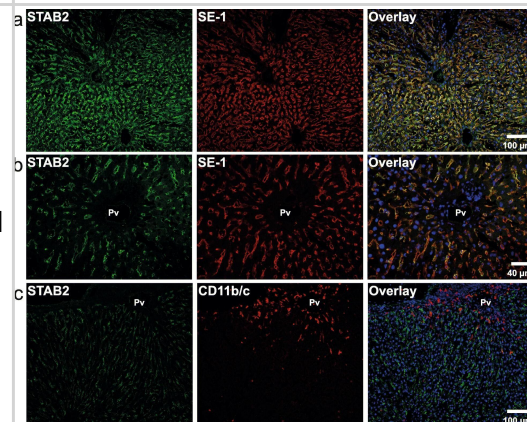


Images

Flow Cytometry: Hepatic Sinusoidal Endothelial Cells Antibody (SE-1) [Alexa Fluor® 488] [NB110-68095AF488] - Representative sequential gating during flow cytometry analysis of rat non-parenchymal liver cells ($n = 4$). Cells were labeled with antibodies to SE-1 (NB110-68095AF488), CD31, and CD45 (NB100-64895PE). LSECs were then identified as SE-1-Alexa488+ cells (e), and the biexponential CD45-PE/CD31-APC of events (f) were used to display and select the CD45+ CD31+ subsets of LSECs. FMOs (used for gating), and single antibody staining controls are shown in Additional file. Image collected and cropped by CiteAb from the following publication (<https://pubmed.ncbi.nlm.nih.gov/33246411/>) licensed under a CC-BY license.



Immunocytochemistry/ Immunofluorescence: Hepatic Sinusoidal Endothelial Cells Antibody (SE-1) [Alexa Fluor® 488] [NB110-68095AF488] - Immune histochemistry of acetone-fixed frozen rat liver sections. The sections were double immune-labeled with primary antibodies against a-b) stabilin-2 (STAB2; green fluorescence), & FcγRIIb2 (SE-1; red fluorescence), or against c) stabilin-2 (STAB2; green fluorescence), & CD11b/c (red fluorescence). Antibodies are listed in Table 1. Pv, portal vein. Nuclei were stained with DAPI (blue fluorescence in overlay images) Image collected & cropped by CiteAb from the following publication (<https://pubmed.ncbi.nlm.nih.gov/33246411/>), licensed under a CC-BY license. Not internally tested by Novus Biologicals.



Publications

Bhandari, S, Li, R Et al. Transcriptome and proteome profiling reveal complementary scavenger and immune features of rat liver sinusoidal endothelial cells and liver macrophages. BMC Mol Cell Biol 2020-11-27 [PMID: 33246411] (IF/IHC, Human)



Novus Biologicals USA

10730 E. Briarwood Avenue
Centennial, CO 80112
USA
Phone: 303.730.1950
Toll Free: 1.888.506.6887
Fax: 303.730.1966
nb-customerservice@bio-techne.com

Bio-Techne Canada

21 Canmotor Ave
Toronto, ON M8Z 4E6
Canada
Phone: 905.827.6400
Toll Free: 855.668.8722
Fax: 905.827.6402
canada.inquires@bio-techne.com

Bio-Techne Ltd

19 Barton Lane
Abingdon Science Park
Abingdon, OX14 3NB, United Kingdom
Phone: (44) (0) 1235 529449
Free Phone: 0800 37 34 15
Fax: (44) (0) 1235 533420
info.EMEA@bio-techne.com

General Contact Information

www.novusbio.com
Technical Support: nb-technical@bio-techne.com
Orders: nb-customerservice@bio-techne.com
General: novus@novusbio.com

Products Related to NB110-68095AF488

NBP1-96981AF488	Mouse IgG2a Kappa Isotype Control (M2AK) [Alexa Fluor® 488]
NB110-68095AF647	Hepatic Sinusoidal Endothelial Cells Antibody (SE-1) [Alexa Fluor® 647]

Limitations

This product is for research use only and is not approved for use in humans or in clinical diagnosis. Primary Antibodies are guaranteed for 1 year from date of receipt.

For more information on our 100% guarantee, please visit www.novusbio.com/guarantee

Earn gift cards/discounts by submitting a review: www.novusbio.com/reviews/submit/NB110-68095AF488

Earn gift cards/discounts by submitting a publication using this product:
www.novusbio.com/publications

