

# Product Datasheet

## Apolipoprotein E/ApoE Antibody (WUE-4) [PE] NB110-60531PE

Unit Size: 0.1 ml

Store at 4C in the dark.

[www.novusbio.com](http://www.novusbio.com)



[technical@novusbio.com](mailto:technical@novusbio.com)

### Publications: 1

Protocols, Publications, Related Products, Reviews, Research Tools and Images at:  
[www.novusbio.com/NB110-60531PE](http://www.novusbio.com/NB110-60531PE)

Updated 10/23/2024 v.20.1

Earn rewards for product  
reviews and publications.

Submit a publication at [www.novusbio.com/publications](http://www.novusbio.com/publications)

Submit a review at [www.novusbio.com/reviews/destination/NB110-60531PE](http://www.novusbio.com/reviews/destination/NB110-60531PE)



**NB110-60531PE**

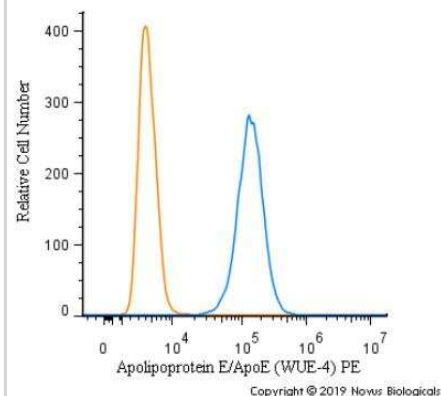
Apolipoprotein E/ApoE Antibody (WUE-4) [PE]

Product Information	
Unit Size	0.1 ml
Concentration	Please see the vial label for concentration. If unlisted please contact technical services.
Storage	Store at 4C in the dark.
Clonality	Monoclonal
Clone	WUE-4
Preservative	0.05% Sodium Azide
Isotype	IgG1 Kappa
Conjugate	PE
Purity	Protein G purified
Buffer	PBS
Product Description	
Host	Mouse
Gene ID	348
Gene Symbol	APOE
Species	Human, Mouse, Rat (Negative)
Reactivity Notes	Reacts with human better than mouse. It does not appear to react with rat brain tissue.
Specificity/Sensitivity	This antibody detects ApoE2, ApoE3 and ApoE4 (PMID 2466929).
Immunogen	Purified human ApoE [UniProt# P02649]
Product Application Details	
Applications	Western Blot, ELISA, Flow Cytometry, Flow (Intracellular), Immunocytochemistry/ Immunofluorescence, Immunohistochemistry, Immunohistochemistry-Paraffin, Immunoprecipitation, CyTOF-ready
Recommended Dilutions	Western Blot, Flow Cytometry, ELISA, Immunohistochemistry, Immunocytochemistry/ Immunofluorescence, Immunoprecipitation, Immunohistochemistry-Paraffin, Flow (Intracellular), CyTOF-ready
Application Notes	Optimal dilution of this antibody should be experimentally determined.

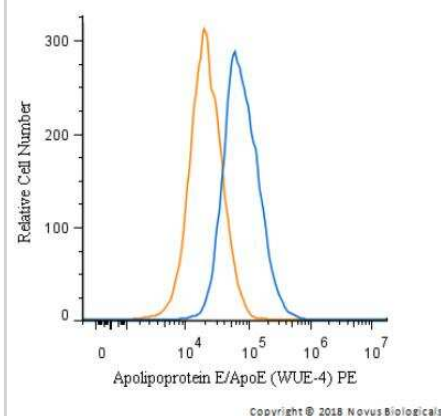


## Images

Flow Cytometry: Apolipoprotein E/ApoE Antibody (WUE-4) [PE] [NB110-60531PE] - An intracellular stain was performed on SK-MEL-28 cells with Apolipoprotein E/ApoE [WUE-4] Antibody NB110-60531PE (blue) and a matched isotype control (orange). Cells were fixed with 4% PFA and then permeabilized with 0.1% saponin. Cells were incubated in an antibody dilution of 2.5 ug/mL for 30 minutes at room temperature. Both antibodies were conjugated to Phycoerythrin.



Flow Cytometry: Apolipoprotein E/ApoE Antibody (WUE-4) [PE] [NB110-60531PE] - An intracellular stain was performed on HepG2 cells with Apolipoprotein E/ApoE Antibody (WUE-4) NB110-60531PE (blue) and a matched isotype control (orange). Cells were fixed with 4% PFA and then permeabilized with 0.1% saponin. Cells were incubated in an antibody dilution of 5 ug/mL for 30 minutes at room temperature. Both antibodies were conjugated to Phycoerythrin.



## Publications

Marco Marchisio, Pasquale Simeone, Giuseppina Bologna, Eva Ercolino, Laura Pierdomenico, Damiana Pieragostino, Alessia Ventrella, Francesca Antonini, Genny Del Zotto, Daniele Vergara, Christian Celia, Luisa Di Marzio, Piero Del Boccio, Antonella Fontana, Domenico Bosco, Sebastiano Miscia, Paola Lanuti Flow Cytometry Analysis of Circulating Extracellular Vesicle Subtypes from Fresh Peripheral Blood Samples International Journal of Molecular Sciences 2020-12-23 [PMID: 33374539]



### **Novus Biologicals USA**

10730 E. Briarwood Avenue  
Centennial, CO 80112  
USA  
Phone: 303.730.1950  
Toll Free: 1.888.506.6887  
Fax: 303.730.1966  
nb-customerservice@bio-techne.com

### **Bio-Techne Canada**

21 Canmotor Ave  
Toronto, ON M8Z 4E6  
Canada  
Phone: 905.827.6400  
Toll Free: 855.668.8722  
Fax: 905.827.6402  
canada.inquires@bio-techne.com

### **Bio-Techne Ltd**

19 Barton Lane  
Abingdon Science Park  
Abingdon, OX14 3NB, United Kingdom  
Phone: (44) (0) 1235 529449  
Free Phone: 0800 37 34 15  
Fax: (44) (0) 1235 533420  
info.EMEA@bio-techne.com

### **General Contact Information**

www.novusbio.com  
Technical Support: nb-technical@bio-techne.com  
Orders: nb-customerservice@bio-techne.com  
General: novus@novusbio.com

### **Products Related to NB110-60531PE**

---

NBP1-43319PE-0.5ml	Mouse IgG1 Kappa Isotype Control (P3.6.2.8.1) [PE]
NBP2-49450PEP	Apolipoprotein E/ApoE Recombinant Protein Antigen
210-TA-005	TNF-alpha [Unconjugated]
KA1031	Human Apolipoprotein E/ApoE ELISA Kit (Colorimetric)

---

### **Limitations**

This product is for research use only and is not approved for use in humans or in clinical diagnosis. Primary Antibodies are guaranteed for 1 year from date of receipt.

For more information on our 100% guarantee, please visit [www.novusbio.com/guarantee](http://www.novusbio.com/guarantee)

Earn gift cards/discounts by submitting a review: [www.novusbio.com/reviews/submit/NB110-60531PE](http://www.novusbio.com/reviews/submit/NB110-60531PE)

Earn gift cards/discounts by submitting a publication using this product:  
[www.novusbio.com/publications](http://www.novusbio.com/publications)

