

Product Datasheet

Enolase 2/Neuron-specific Enolase Antibody NB110-58870

Unit Size: 0.1 ml

Store at 4C short term. Aliquot and store at -20C long term. Avoid freeze-thaw cycles.

www.novusbio.com



technical@novusbio.com

Reviews: 2 Publications: 5

Protocols, Publications, Related Products, Reviews, Research Tools and Images at:
www.novusbio.com/NB110-58870

Updated 2/17/2025 v.20.1

**Earn rewards for product
reviews and publications.**

Submit a publication at www.novusbio.com/publications

Submit a review at www.novusbio.com/reviews/destination/NB110-58870



NB110-58870**Enolase 2/Neuron-specific Enolase Antibody**

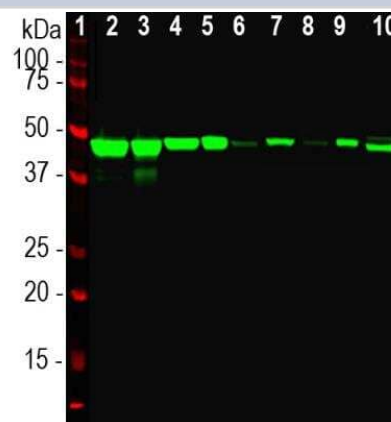
Product Information	
Unit Size	0.1 ml
Concentration	This product is unpurified. The exact concentration of antibody is not quantifiable.
Storage	Store at 4C short term. Aliquot and store at -20C long term. Avoid freeze-thaw cycles.
Clonality	Polyclonal
Preservative	0.035% Sodium Azide
Isotype	IgG
Purity	Unpurified
Buffer	Supplied as serum
Target Molecular Weight	47 kDa

Product Description	
Host	Rabbit
Gene ID	2026
Gene Symbol	ENO2
Species	Human, Mouse, Rat
Marker	Neuronal Marker
Immunogen	Recombinant full length human NSE purified from E. coli. [UniProt# P09104]

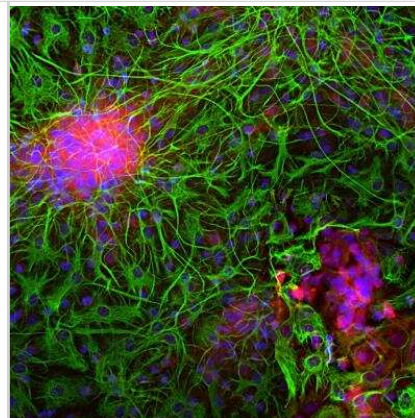
Product Application Details	
Applications	Western Blot, Simple Western, Immunocytochemistry/ Immunofluorescence, Immunohistochemistry, Knockdown Validated
Recommended Dilutions	Western Blot 1:2000, Simple Western 1:10000, Immunohistochemistry 1:500, Immunocytochemistry/ Immunofluorescence 1:500, Knockdown Validated
Application Notes	<p>This NSE antibody is useful for Immunocytochemistry/Immunofluorescence and Western Blot.</p> <p>In Simple Western only 10 - 15 uL of the recommended dilution is used per data point.</p> <p>See Simple Western Antibody Database for Simple Western validation: Tested in Human Brain lysate 0.05 mg/mL, separated by Size, antibody dilution of 1:10,000. Separated by Size-Wes, Sally Sue/Peggy Sue.</p>

Images

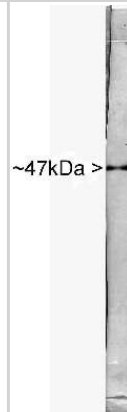
Western Blot: Enolase 2/Neuron-specific Enolase Antibody [NB110-58870] - Analysis of different tissue and cell lysates using rabbit pAb to neuron specific enolase (NSE), NB110-58870, dilution 1:5,000 in green: [1] protein standard (red), [2] rat brain, [3] rat spinal cord, [4] mouse brain, [5] mouse spinal cord, [6] NIH-3T3, [7] HEK293, [8] HeLa, [9] SH-SY5Y, and [10] C6 cells. A single band at about 47kDa corresponds to the NSE protein, seen only in extracts containing neurons or neuronal lineage cells.



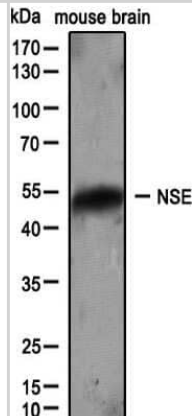
Immunocytochemistry/Immunofluorescence: Enolase 2/Neuron-specific Enolase Antibody [NB110-58870] - Analysis of mixed cortical neuronal-glia cell culture from E20 rat stained with rabbit pAb to neuron specific enolase (NSE), NB110-58870, dilution 1:500 in red, and costained with chicken pAb to GFAP, dilution 1:5,000 in green. The blue is Hoechst staining of nuclear DNA. the NSE antibody labels protein expressed in neuronal cells, while the GFAP antibody stains intermediate filaments in astrocytic and certain other glial cells.



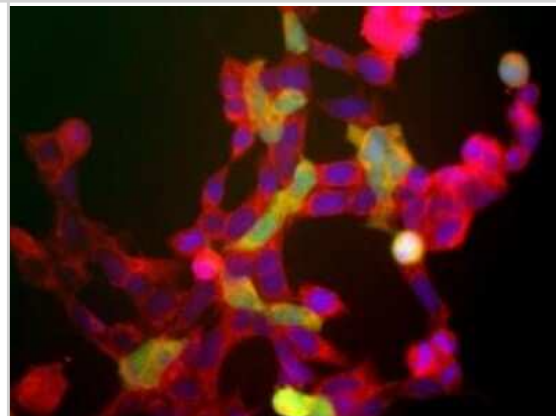
Western Blot: Enolase 2/Neuron-specific Enolase Antibody [NB110-58870] - Blot of rat spinal cord probed with rabbit antibody to NSE. The antibody stains a single sharp band corresponding to NSE at about 47kDa.



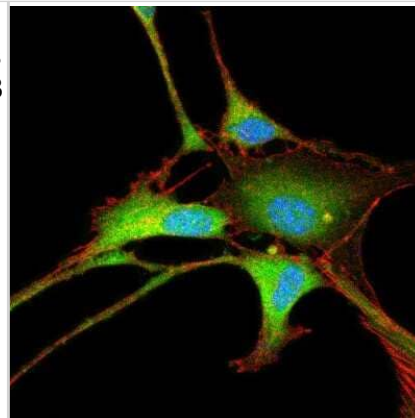
Western Blot: Enolase 2/Neuron-specific Enolase Antibody [NB110-58870] - Western blot analysis of extracts from mouse brain using NSE antibody (NB110-58870, 1:100).



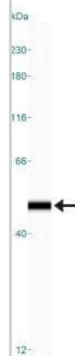
Immunocytochemistry/Immunofluorescence: Enolase 2/Neuron-specific Enolase Antibody [NB110-58870] - Shows the human embryonic kidney cells line 293, which express many neuronal proteins (1). The red channel shows staining which recognizes all of these 293 cells. The green channels shows staining for another neuronal marker to UCHL1 using NB110-58869. This neuronal gene is apparently activated in a cell density dependent fashion and at this stage only a few cells express this protein. However all cells that express NSE also express UCHL1.



Immunocytochemistry/Immunofluorescence: Enolase 2/Neuron-specific Enolase Antibody [NB110-58870] - Confocal immunofluorescent analysis of 3T3 cells using NSE antibody (NB110-58870, 1:5). An Alexa Fluor 488-conjugated Goat to rabbit IgG was used as secondary antibody (green, A). Actin filaments were labeled with Alexa Fluor 568 phalloidin (red, B). DAPI was used to stain the cell nuclei (blue, C).



Simple Western: Enolase 2/Neuron-specific Enolase Antibody [NB110-58870] - Simple Western lane view shows a specific band for Enolase 2/Neuron specific enolase in 0.05 mg/ml of Human Brain lysate. This experiment was performed under reducing conditions using the 12-230 kDa separation system.



Publications

Powers RM, Daza R, Koehler AE et al. Growth cone macropinocytosis of neurotrophin receptor and neuriteogenesis are regulated by neuron navigator 1 *Molecular biology of the cell* 2022-06-01 [PMID: 35352947] (ICC/IF, Human)

Details:

Dilution used for ICC 1:250

Niture S, Tricoli L, Qi Q Et al. MicroRNA miR-99b-5p Targets mTOR/AR axis, Induces Autophagy, and Inhibits Prostate Cancer Cell Proliferation *Tumour Biol* 2022-07-11 [PMID: 35811549]

Gong W, Zhang S, Zong Y et al. hiPS Cell-Derived Neurons for High-Throughput Screening Methods *Mol. Biol.* 2019-05-25 [PMID: 31124122] (ICC/IF, Human)

Modarai S, Gupta A, Opdenaker L et al. The anti-cancer effect of retinoic acid signaling in CRC occurs via decreased growth of ALDH+ colon cancer stem cells and increased differentiation of stem cells *Otolaryngol Head Neck Surg* 2018-10-16 [PMID: 30410666] (WB, Human)

Jung Y, Cackowski FC, Yumoto K, Decker A. CXCL12gamma Promotes Development of Metastatic Castration Resistant Prostate Cancer by Induction of Cancer Stem Cell and Neuroendocrine Phenotypes. *Cancer Res.* 2018-02-05 [PMID: 29431639] (WB, Human)



Novus Biologicals USA

10730 E. Briarwood Avenue
Centennial, CO 80112
USA
Phone: 303.730.1950
Toll Free: 1.888.506.6887
Fax: 303.730.1966
nb-customerservice@bio-techne.com

Bio-Techne Canada

21 Canmotor Ave
Toronto, ON M8Z 4E6
Canada
Phone: 905.827.6400
Toll Free: 855.668.8722
Fax: 905.827.6402
canada.inquires@bio-techne.com

Bio-Techne Ltd

19 Barton Lane
Abingdon Science Park
Abingdon, OX14 3NB, United Kingdom
Phone: (44) (0) 1235 529449
Free Phone: 0800 37 34 15
Fax: (44) (0) 1235 533420
info.EMEA@bio-techne.com

General Contact Information

www.novusbio.com
Technical Support: nb-technical@bio-techne.com
Orders: nb-customerservice@bio-techne.com
General: novus@novusbio.com

Products Related to NB110-58870

NBL1-10268	Enolase 2/Neuron-specific Enolase Overexpression Lysate
HAF008	Goat anti-Rabbit IgG Secondary Antibody [HRP]
NB7160	Goat anti-Rabbit IgG (H+L) Secondary Antibody [HRP]
NBP2-24891	Rabbit IgG Isotype Control

Limitations

This product is for research use only and is not approved for use in humans or in clinical diagnosis. Primary Antibodies are guaranteed for 1 year from date of receipt.

For more information on our 100% guarantee, please visit www.novusbio.com/guarantee

Earn gift cards/discounts by submitting a review: www.novusbio.com/reviews/submit/NB110-58870

Earn gift cards/discounts by submitting a publication using this product:
www.novusbio.com/publications

