

# Product Datasheet

## **Aminopeptidase N/CD13 Antibody (WM15) [mFluor Violet 610 SE] NB110-58720MFV610**

Unit Size: 0.1 ml

Store at 4C in the dark.

[www.novusbio.com](http://www.novusbio.com)



[technical@novusbio.com](mailto:technical@novusbio.com)

Protocols, Publications, Related Products, Reviews, Research Tools and Images at:  
[www.novusbio.com/NB110-58720MFV610](http://www.novusbio.com/NB110-58720MFV610)

Updated 9/20/2023 v.20.1

Earn rewards for product  
reviews and publications.

Submit a publication at [www.novusbio.com/publications](http://www.novusbio.com/publications)

Submit a review at [www.novusbio.com/reviews/destination/NB110-58720MFV610](http://www.novusbio.com/reviews/destination/NB110-58720MFV610)



**NB110-58720MFV610**

Aminopeptidase N/CD13 Antibody (WM15) [mFluor Violet 610 SE]

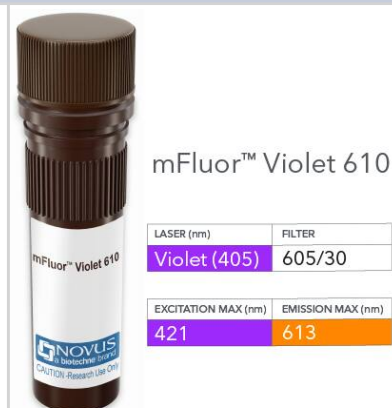
Product Information	
Unit Size	0.1 ml
Concentration	Please see the vial label for concentration. If unlisted please contact technical services.
Storage	Store at 4C in the dark.
Clonality	Monoclonal
Clone	WM15
Preservative	0.05% Sodium Azide
Isotype	IgG1
Conjugate	mFluor Violet 610 SE
Purity	Protein A purified
Buffer	50mM Sodium Borate

Product Description	
Host	Mouse
Gene ID	290
Gene Symbol	ANPEP
Species	Human, Primate
Specificity/Sensitivity	The antibody WM15 recognises the human CD13 cell surface glycoprotein, a 150 kDa molecule expressed on granulocytes, endothelial cells, epithelial cells and myeloid progenitors. HLDA III; WS Code M 213 HLDA IV; WS Code M 44 HLDA IV; WS Code M 209 HLDA V; WS Code M MA191
Immunogen	Human AML cells (NM_001150.2).

Product Application Details	
Applications	Flow Cytometry, Immunohistochemistry, Immunohistochemistry-Frozen, Immunoprecipitation, CyTOF-ready
Recommended Dilutions	Flow Cytometry, Immunohistochemistry, Immunoprecipitation, Immunohistochemistry-Frozen, CyTOF-ready
Application Notes	Optimal dilution of this antibody should be experimentally determined.

**Images**

Aminopeptidase N/CD13 Antibody (WM15) [mFluor Violet 610 SE] [NB110-58720MFV610] - Vial of mFluor Violet 610 conjugated antibody. mFluor Violet 610 is optimally excited at 421 nm by the Violet laser (405 nm) and has an emission maximum of 613 nm.





### **Novus Biologicals USA**

10730 E. Briarwood Avenue  
Centennial, CO 80112  
USA  
Phone: 303.730.1950  
Toll Free: 1.888.506.6887  
Fax: 303.730.1966  
novus@novusbio.com

### **Bio-Techne Canada**

21 Canmotor Ave  
Toronto, ON M8Z 4E6  
Canada  
Phone: 905.827.6400  
Toll Free: 855.668.8722  
Fax: 905.827.6402  
canada.inquires@bio-techne.com

### **Bio-Techne Ltd**

19 Barton Lane  
Abingdon Science Park  
Abingdon, OX14 3NB, United Kingdom  
Phone: (44) (0) 1235 529449  
Free Phone: 0800 37 34 15  
Fax: (44) (0) 1235 533420  
info.EMEA@bio-techne.com

### **General Contact Information**

www.novusbio.com  
Technical Support: technical@novusbio.com  
Orders: orders@novusbio.com  
General: novus@novusbio.com

### **Products Related to NB110-58720MFV610**

---

NBP2-33855PEP	Aminopeptidase N/CD13 Recombinant Protein Antigen
210-TA-005	TNF-alpha [Unconjugated]
3815-ZN-010	Aminopeptidase N/CD13 [Unconjugated]
DC140	CD14 [HRP]

---

### **Limitations**

This product is for research use only and is not approved for use in humans or in clinical diagnosis. Primary Antibodies are guaranteed for 1 year from date of receipt.

For more information on our 100% guarantee, please visit [www.novusbio.com/guarantee](http://www.novusbio.com/guarantee)

Earn gift cards/discounts by submitting a review: [www.novusbio.com/reviews/submit/NB110-58720MFV610](http://www.novusbio.com/reviews/submit/NB110-58720MFV610)

Earn gift cards/discounts by submitting a publication using this product:  
[www.novusbio.com/publications](http://www.novusbio.com/publications)

