

Product Datasheet

Endoglin/CD105 Antibody (MEM-229) [PE] NB110-58718PE

Unit Size: 0.1 ml

Store at 4C in the dark.

www.novusbio.com



technical@novusbio.com

Protocols, Publications, Related Products, Reviews, Research Tools and Images at:
www.novusbio.com/NB110-58718PE

Updated 10/23/2024 v.20.1

Earn rewards for product
reviews and publications.

Submit a publication at www.novusbio.com/publications

Submit a review at www.novusbio.com/reviews/destination/NB110-58718PE



NB110-58718PE

Endoglin/CD105 Antibody (MEM-229) [PE]

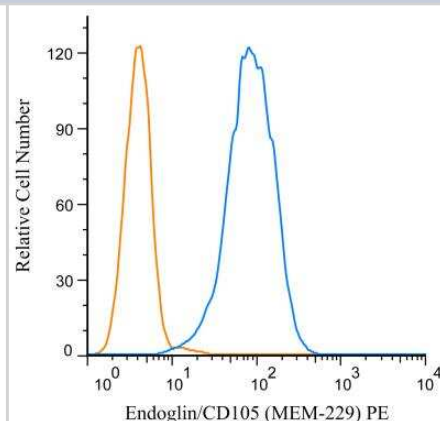
Product Information	
Unit Size	0.1 ml
Concentration	Please see the vial label for concentration. If unlisted please contact technical services.
Storage	Store at 4C in the dark.
Clonality	Monoclonal
Clone	MEM-229
Preservative	0.05% Sodium Azide
Isotype	IgG2a
Conjugate	PE
Purity	Protein A purified
Buffer	PBS

Product Description	
Host	Mouse
Gene ID	2022
Gene Symbol	ENG
Species	Human, Porcine, Canine (Negative), Equine (Negative)
Marker	Neo-endothelial Cells Marker
Specificity/Sensitivity	This antibody (clone MEM-229) recognizes CD105 (Endoglin), a 180 kDa type I integral membrane homodimer glycoprotein expressed on vascular endothelial cells (small and large vessels), activated monocytes and tissue macrophages, stromal cells of certain tissues including bone marrow, pre-B lymphocytes in fetal marrow and erythroid precursors in fetal and adult bone marrow; it is also present on syncytiotrophoblast on placenta throughout pregnancy.
Immunogen	recombinant vaccinia virus containing human CD105 (L-isoform) cDNA

Product Application Details	
Applications	Western Blot, Flow Cytometry, Immunocytochemistry/ Immunofluorescence, Immunohistochemistry, Immunohistochemistry-Frozen, CyTOF-ready
Recommended Dilutions	Western Blot, Flow Cytometry, Immunohistochemistry, Immunocytochemistry/ Immunofluorescence, Immunohistochemistry-Frozen, CyTOF-ready

Images

Flow Cytometry: Endoglin/CD105 Antibody (MEM-229) [PE] [NB110-58718PE] - A cell surface stain was performed on HeLa cells with Endoglin/CD105 antibody (MEM-229) NB110-58718PE (blue) and a matched isotype control (orange). Cells were incubated in an antibody dilution of 1 ug/mL for 20 minutes at room temperature. Both antibodies were conjugated to Phycoerythrin.





Novus Biologicals USA

10730 E. Briarwood Avenue
Centennial, CO 80112
USA
Phone: 303.730.1950
Toll Free: 1.888.506.6887
Fax: 303.730.1966
nb-customerservice@bio-techne.com

Bio-Techne Canada

21 Canmotor Ave
Toronto, ON M8Z 4E6
Canada
Phone: 905.827.6400
Toll Free: 855.668.8722
Fax: 905.827.6402
canada.inquires@bio-techne.com

Bio-Techne Ltd

19 Barton Lane
Abingdon Science Park
Abingdon, OX14 3NB, United Kingdom
Phone: (44) (0) 1235 529449
Free Phone: 0800 37 34 15
Fax: (44) (0) 1235 533420
info.EMEA@bio-techne.com

General Contact Information

www.novusbio.com
Technical Support: nb-technical@bio-techne.com
Orders: nb-customerservice@bio-techne.com
General: novus@novusbio.com

Products Related to NB110-58718PE

NB110-58718APC	Endoglin/CD105 Antibody (MEM-229) [Allophycocyanin]
NBP2-49516PEP	Endoglin/CD105 Recombinant Protein Antigen
DVE00	VEGF [HRP]
DNDG00	Endoglin/CD105 [HRP]

Limitations

This product is for research use only and is not approved for use in humans or in clinical diagnosis. Primary Antibodies are guaranteed for 1 year from date of receipt.

For more information on our 100% guarantee, please visit www.novusbio.com/guarantee

Earn gift cards/discounts by submitting a review: www.novusbio.com/reviews/submit/NB110-58718PE

Earn gift cards/discounts by submitting a publication using this product:
www.novusbio.com/publications

