

Product Datasheet

Tmp21/p23 Antibody - BSA Free NB110-57586

Unit Size: 0.1 ml

Aliquot and store at -20C or -80C. Avoid freeze-thaw cycles.

www.novusbio.com



technical@novusbio.com

Protocols, Publications, Related Products, Reviews, Research Tools and Images at:
www.novusbio.com/NB110-57586

Updated 4/4/2022 v.20.1

Earn rewards for product
reviews and publications.

Submit a publication at www.novusbio.com/publications

Submit a review at www.novusbio.com/reviews/destination/NB110-57586



NB110-57586

Tmp21/p23 Antibody - BSA Free

Product Information	
Unit Size	0.1 ml
Concentration	0.9 mg/ml
Storage	Aliquot and store at -20C or -80C. Avoid freeze-thaw cycles.
Clonality	Polyclonal
Preservative	0.1% Sodium Azide
Isotype	IgG
Purity	Immunogen affinity purified
Buffer	PBS and 30% Glycerol
Target Molecular Weight	21 kDa

Product Description	
Host	Rabbit
Gene ID	10972
Gene Symbol	TMED10
Species	Human, Mouse, Rat, Bovine, Chicken, Primate, Rabbit
Reactivity Notes	Human, primate, mouse, rat, cow, rabbit, and chicken embryo.
Immunogen	A synthetic peptide made to an internal sequence of the human TMP21/TMED10 protein (within residues 100-200). [Swiss-Prot# P49755]

Product Application Details	
Applications	Western Blot, Immunohistochemistry, Immunohistochemistry-Paraffin, Knockdown Validated
Recommended Dilutions	Western Blot 2 ug/ml, Immunohistochemistry 1:100-1:200, Immunohistochemistry-Paraffin 1:100-1:200, Knockdown Validated
Application Notes	This TMP21 antibody is useful for Immunohistochemistry-Paraffin and Western blot analysis where a band is seen at ~21 kDa. The observed molecular weight of the protein may vary from the listed predicted molecular weight due to post translational modifications, post translation cleavages, relative charges, and other experimental factors.

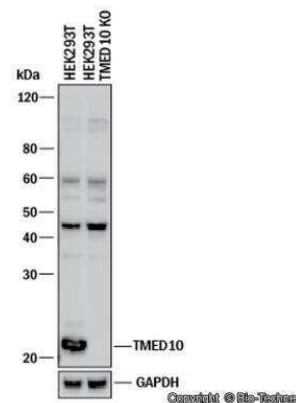


Images

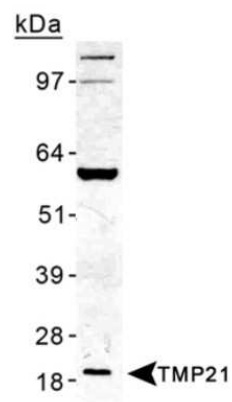
Immunohistochemistry: Tmp21/p23 Antibody [NB110-57586] - TMP21 Antibody [NB110-57586] - Detection of TMP21 in central neurons.



Knockdown Validated: Tmp21/p23 Antibody [NB110-57586] - Western blot shows lysates of HEK293T human embryonic kidney parental cell line and TMP21/TMED10 knockout (KO) HEK293T cell line. PVDF membrane was probed with 2.0 ug/ml of Rabbit Anti-Human TMP21/TMED10 Polyclonal Antibody (Catalog # NB110-57586) followed by HRP-conjugated Anti-Rabbit IgG Secondary Antibody (Catalog #HAF008). Specific band was detected for TMP21/TMED10 at approximately 25 kDa (as indicated) in the parental HEK293T cell line, but is not detectable in the knockout HEK293T cell line. This experiment was conducted under reducing conditions.



Western Blot: Tmp21/p23 Antibody [NB110-57586] - TMP21 Antibody [NB110-57586] - Detection of TMP21 in human liver lysate.



Procedures

Protocol specific for TMP21 Antibody (NB110-57586)

Tmp21/p23 Antibody: https://www.novusbio.com/products/tmp21-p23-antibody_nb110-57586

Western Blot Protocol

1. Perform SDS-PAGE (4-12% MOPS) on samples to be analyzed, loading 30 ug of total protein per lane.
2. Transfer proteins to Nitrocellulose according to the instructions provided by the manufacturer of the transfer apparatus.
3. Rinse membrane with dH₂O and then stain the blot using Ponceau S for 1-2 minutes to access the transfer of proteins onto the nitrocellulose membrane. Rinse the blot in water to remove excess stain and mark the lane locations and locations of molecular weight markers using a pencil.
4. Rinse the blot in TBS for approximately 5 minutes.
5. Block the membrane using 5% non-fat dry milk + 1% BSA in TBS, 1 hour at room temperature.
6. Rinse the membrane in dH₂O and then wash the membrane in wash buffer [TBS + 0.1% Tween] 3 times for 10 minutes each.
7. Dilute the rabbit anti-TMP21 primary antibody (NB 110-57586) in blocking buffer and incubate 2 hours at room temperature.
8. Rinse the membrane in dH₂O and then wash the membrane in wash buffer [TBS + 0.1% Tween] 3 times for 10 minutes each.
9. Apply the diluted rabbit-IgG HRP-conjugated secondary antibody in blocking buffer (as per manufacturers instructions) and incubate 1 hour at room temperature.
10. Wash the blot in wash buffer [TBS + 0.1% Tween] 3 times for 10 minutes each (this step can be repeated as required to reduce background).
11. Apply the detection reagent of choice in accordance with the manufacturers instructions (Pierce, ECL).

Note: Tween-20 can be added to the blocking or antibody dilution buffer at a final concentration of 0.05-0.2%, provided it does not interfere with antibody-antigen binding.





Novus Biologicals USA

10730 E. Briarwood Avenue
Centennial, CO 80112
USA

Phone: 303.730.1950
Toll Free: 1.888.506.6887
Fax: 303.730.1966
novus@novusbio.com

Bio-Techne Canada

21 Canmotor Ave
Toronto, ON M8Z 4E6
Canada

Phone: 905.827.6400
Toll Free: 855.668.8722
Fax: 905.827.6402
canada.inquires@bio-techne.com

Bio-Techne Ltd

19 Barton Lane
Abingdon Science Park
Abingdon, OX14 3NB, United Kingdom

Phone: (44) (0) 1235 529449
Free Phone: 0800 37 34 15
Fax: (44) (0) 1235 533420
info.EMEA@bio-techne.com

General Contact Information

www.novusbio.com
Technical Support: technical@novusbio.com
Orders: orders@novusbio.com
General: novus@novusbio.com

Products Related to NB110-57586

NB820-59232	Human Liver Whole Tissue Lysate (Adult Whole Normal)
NB110-57586PEP	Tmp21/p23 Antibody Blocking Peptide
HAF008	Goat anti-Rabbit IgG Secondary Antibody [HRP]
NB7156	Goat anti-Rabbit IgG (H+L) Secondary Antibody
NBP2-24891	Rabbit IgG Isotype Control

Limitations

This product is for research use only and is not approved for use in humans or in clinical diagnosis. Primary Antibodies are guaranteed for 1 year from date of receipt.

For more information on our 100% guarantee, please visit www.novusbio.com/guarantee

Earn gift cards/discounts by submitting a review: www.novusbio.com/reviews/submit/NB110-57586

Earn gift cards/discounts by submitting a publication using this product:
www.novusbio.com/publications

