

Product Datasheet

CD163 Antibody (EDHu-1) [Allophycocyanin] NB110-40686APC

Unit Size: 0.1 ml

Store at 4C in the dark.

www.novusbio.com



technical@novusbio.com

Protocols, Publications, Related Products, Reviews, Research Tools and Images at:
www.novusbio.com/NB110-40686APC

Updated 10/23/2024 v.20.1

Earn rewards for product
reviews and publications.

Submit a publication at www.novusbio.com/publications

Submit a review at www.novusbio.com/reviews/destination/NB110-40686APC



NB110-40686APC

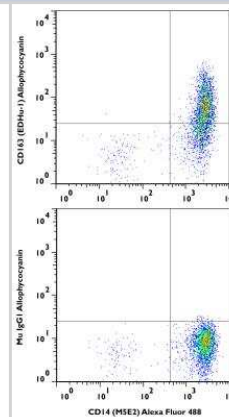
CD163 Antibody (EDHu-1) [Allophycocyanin]

Product Information	
Unit Size	0.1 ml
Concentration	Please see the vial label for concentration. If unlisted please contact technical services.
Storage	Store at 4C in the dark.
Clonality	Monoclonal
Clone	EDHu-1
Preservative	0.05% Sodium Azide
Isotype	IgG1
Conjugate	Allophycocyanin
Purity	Protein A purified
Buffer	PBS
Target Molecular Weight	125.5 kDa
Product Description	
Description	This conjugate is made on demand. Actual recovery may vary from the stated volume of this product. The volume will be greater than or equal to the unit size stated on the datasheet.
Host	Mouse
Gene ID	9332
Gene Symbol	CD163
Species	Human
Reactivity Notes	Primate reactivity reported in scientific literature (PMID: 28542585). Monkey reactivity reported in scientific literature (PMID: 28542585). Rat, canine, equine and feline reactivity reported from a verified customer review.
Marker	Histiocytic Marker
Specificity/Sensitivity	NB110-40686 recognizes the human CD163 cell surface antigen, a 130-140 kDa glycoprotein expressed by tissue macrophages. CD163 is not expressed by resting peripheral blood leucocytes, but expression may be induced on monocytes by culture in dexamethasone.
Immunogen	Leucocytes harvested from the pleural cavity of patients with idiopathic spontaneous pneumothorax
Product Application Details	
Applications	Western Blot, ELISA, Flow Cytometry, Flow (Cell Surface), Immunoassay, Immunocytochemistry/ Immunofluorescence, Immunohistochemistry, Immunohistochemistry-Frozen, Immunohistochemistry-Paraffin
Recommended Dilutions	Western Blot, Flow Cytometry, ELISA, Immunohistochemistry, Immunocytochemistry/ Immunofluorescence, Immunohistochemistry-Paraffin, Immunohistochemistry-Frozen, Immunoassay, Flow (Cell Surface)



Images

A surface stain was performed on human peripheral blood monocytes with CD163 (EDHu-1) antibody NB110-40686APC and a matched isotype control NBP2-27287APC. Cells were incubated in an antibody dilution of 1 ug/mL for 20 minutes at room temperature. A co-stain was performed with NB100-77758AF488.





Novus Biologicals USA

10730 E. Briarwood Avenue
Centennial, CO 80112
USA
Phone: 303.730.1950
Toll Free: 1.888.506.6887
Fax: 303.730.1966
nb-customerservice@bio-techne.com

Bio-Techne Canada

21 Canmotor Ave
Toronto, ON M8Z 4E6
Canada
Phone: 905.827.6400
Toll Free: 855.668.8722
Fax: 905.827.6402
canada.inquires@bio-techne.com

Bio-Techne Ltd

19 Barton Lane
Abingdon Science Park
Abingdon, OX14 3NB, United Kingdom
Phone: (44) (0) 1235 529449
Free Phone: 0800 37 34 15
Fax: (44) (0) 1235 533420
info.EMEA@bio-techne.com

General Contact Information

www.novusbio.com
Technical Support: nb-technical@bio-techne.com
Orders: nb-customerservice@bio-techne.com
General: novus@novusbio.com

Products Related to NB110-40686APC

NBP1-97005APC	Mouse IgG1 Isotype Control (MG1) [Allophycocyanin]
NB110-40686PE	CD163 Antibody (EDHu-1) [PE]
NBP2-49028PEP	CD163 Recombinant Protein Antigen
210-TA-005	TNF-alpha [Unconjugated]

Limitations

This product is for research use only and is not approved for use in humans or in clinical diagnosis. Primary Antibodies are guaranteed for 1 year from date of receipt.

For more information on our 100% guarantee, please visit www.novusbio.com/guarantee

Earn gift cards/discounts by submitting a review: www.novusbio.com/reviews/submit/NB110-40686APC

Earn gift cards/discounts by submitting a publication using this product:
www.novusbio.com/publications

