

Product Datasheet

Ulex Europaeus Lectin 1 Antibody NB110-13922

Unit Size: 0.25 ml

Store at 4C short term. Aliquot and store at -20C long term. Avoid freeze-thaw cycles.

www.novusbio.com



technical@novusbio.com

Publications: 2

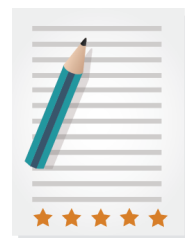
Protocols, Publications, Related Products, Reviews, Research Tools and Images at:
www.novusbio.com/NB110-13922

Updated 10/23/2024 v.20.1

Earn rewards for product
reviews and publications.

Submit a publication at www.novusbio.com/publications

Submit a review at www.novusbio.com/reviews/destination/NB110-13922



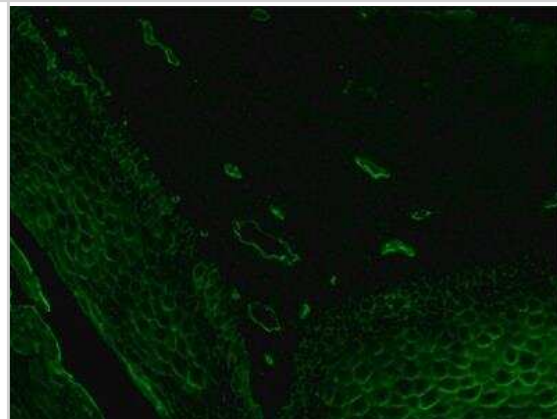
NB110-13922**Ulex Europaeus Lectin 1 Antibody**

Product Information	
Unit Size	0.25 ml
Concentration	This product is unpurified. The exact concentration of antibody is not quantifiable.
Storage	Store at 4C short term. Aliquot and store at -20C long term. Avoid freeze-thaw cycles.
Clonality	Polyclonal
Preservative	0.9% Sodium Azide
Isotype	IgG
Purity	Unpurified
Buffer	Whole antisera, delipidized
Product Description	
Host	Rabbit
Species	Plant
Marker	Endothelial Cells
Specificity/Sensitivity	The antibody may be used for studies of the vascular structures. It reacts specifically with UEA-I bound to human endothelial cells of normal and neoplastic blood and lymphatic vessels. Its uniform reaction with vessels enables differentiation between vessels and artificial slits in the tissue.
Immunogen	Anti-Ulex Europaeus-I (UEA-I) Lectin is developed in rabbit using purified Ulex Europaeus-I lectin from gorse seeds as the immunogen.
Product Application Details	
Applications	Immunocytochemistry/ Immunofluorescence, Immunohistochemistry, Immunohistochemistry-Frozen, Immunohistochemistry-Paraffin
Recommended Dilutions	Immunohistochemistry, Immunocytochemistry/ Immunofluorescence 1:500, Immunohistochemistry-Paraffin 1:500, Immunohistochemistry-Frozen 1:500
Application Notes	Lectin isolated from Ulex europaeus I (NBP2-42700) is specific for alpha-L-fucose-containing glycocompounds which (in combination with NB110-13922) makes it a specific marker for vascular endothelial cells and tumors derived from them. For immunoassays on animal tissues, Ulex Europaeus Lectin 1 Protein (NBP2-42700) would be a required product alongwith NB110-13922. Technically, NBP2-42700 will bind the carbohydrate moiety on vascular endothelial cells as first primary reagent and then NB110-13922 will bind to Ulex Europaeus-1 lectin (NBP2-42700) in the primary antibody incubation step (See product specific IHC-P Protocol).



Images

Immunohistochemistry: Ulex Europaeus Lectin 1 Antibody [NB110-13922] - Formalin fixed, paraffin-embedded Human tonsil tissue sections were stained with 1:1000 Anti-Lectin, Ulex europaeus-I antibody produced in Rabbit followed by 1:30 Anti-Rabbit IgG (whole molecule)-FITC antibody produced in Goat.



Publications

Ding L, Chakrabarti J, Sheriff S et al. Toll Like Receptor 9 Pathway Mediates Schlafen+-MDSC Polarization During Helicobacter-Induced Gastric Metaplasias Gastroenterology 2022-04-26 [PMID: 35487288] (IF/IHC, Mouse)

GHAZALI M, AB-RAHIM S, MUHAMAD M EXPRESSION OF THE MICROFOLD CELLS IN THREE-DIMENSIONAL COCULTURE SYSTEM FOR IN VITRO CULTIVATION OF HUMAN NOROVIRUS Int J App Pharm 2019-09-21

Procedures

Immunohistochemistry protocol for Ulex Europaeus Lectin 1 Antibody (NB110-13922)

Immunohistochemistry protocol for Ulex Europaeus Lectin 1 Antibody (NB110-13922):

IHC Staining Protocol

Materials:

1. Paraffin sections (4-6um) of animal or human tissue (material fixed with 10% phosphate buffered formalin)
2. Phosphate buffered saline (PBS) pH 7.5-7.6 (10-20 mM) containing 1% BSA
3. 0.1% Pronase in PBS
4. 0.1% Trypsin in PBS
5. 10 ug/ml Ulex Europaeus-1 lectin (NBP2-42700)
6. Anti Ulex Europaeus-1 lectin antibody (NB110-13922)
7. Secondary antiserum: FITC anti-rabbit IgG (H+L)
8. Mounting Medium

Method:

1. After deparaffinization treat with 0.1% Promase in PBS for 10 minutes at 37C. Alternatively, digest with 0.1% Trypsin in PBS for 25 minutes at 37C. Gently rinse in PBS for 5 minutes (2X).
2. Apply 2 drops of 10 ug/ml solution of UEA-1 (NBP2-42700)
3. Incubate for 30 minutes at 37C. Gently rinse in PBS for 5 minutes (X2)
4. Apply 2 drops Anti Ulex Europaeus-1 lectin antibody (NB110-13922) diluted 1:500 in PBS containing 1% BSA
5. Incubate for 1 hr. at 37C
6. Gently rinse in PBS for 5 minutes
7. Drain, carefully blot away excess moisture around the sections.
8. Quickly apply freshly prepared diluted FITC secondary antiserum (at previously determined appropriate dilution) in PBS containing 1% BSA.
9. Incubate for 30 minutes at 37C
10. Gently rinse in PBS for 5 minutes (x2). Blot away excess moisture from around the sections.
11. Add mounting medium and coverslip.
12. Read under the UV fluorescent microscope. Mounted preparations can be stored in a refrigerator.

Notes:

1. Do not allow tissue sections to dry out at any time during the aforementioned procedure.
2. In case of excessive background staining remove aggregates from antisera by centrifuging for 15 minutes immediately prior to use.



Novus Biologicals USA

10730 E. Briarwood Avenue
Centennial, CO 80112
USA
Phone: 303.730.1950
Toll Free: 1.888.506.6887
Fax: 303.730.1966
nb-customerservice@bio-techne.com

Bio-Techne Canada

21 Canmotor Ave
Toronto, ON M8Z 4E6
Canada
Phone: 905.827.6400
Toll Free: 855.668.8722
Fax: 905.827.6402
canada.inquires@bio-techne.com

Bio-Techne Ltd

19 Barton Lane
Abingdon Science Park
Abingdon, OX14 3NB, United Kingdom
Phone: (44) (0) 1235 529449
Free Phone: 0800 37 34 15
Fax: (44) (0) 1235 533420
info.EMEA@bio-techne.com

General Contact Information

www.novusbio.com
Technical Support: nb-technical@bio-techne.com
Orders: nb-customerservice@bio-techne.com
General: novus@novusbio.com

Products Related to NB110-13922

NBP2-42700-5mg	Ulex Europaeus Lectin 1 Native Protein
HAF008	Goat anti-Rabbit IgG Secondary Antibody [HRP]
NB7160	Goat anti-Rabbit IgG (H+L) Secondary Antibody [HRP]
NBP2-24891	Rabbit IgG Isotype Control

Limitations

This product is for research use only and is not approved for use in humans or in clinical diagnosis. Primary Antibodies are guaranteed for 1 year from date of receipt.

For more information on our 100% guarantee, please visit www.novusbio.com/guarantee

Earn gift cards/discounts by submitting a review: www.novusbio.com/reviews/submit/NB110-13922

Earn gift cards/discounts by submitting a publication using this product:
www.novusbio.com/publications

