

Product Datasheet

EPS8L2 Antibody NB100-97850

Unit Size: 0.1 ml

Store at 4C. Do not freeze.

www.novusbio.com



technical@novusbio.com

Protocols, Publications, Related Products, Reviews, Research Tools and Images at:
www.novusbio.com/NB100-97850

Updated 10/23/2024 v.20.1

Earn rewards for product
reviews and publications.

Submit a publication at www.novusbio.com/publications

Submit a review at www.novusbio.com/reviews/destination/NB100-97850



NB100-97850**EPS8L2 Antibody****Product Information**

Unit Size	0.1 ml
Concentration	0.2 mg/ml
Storage	Store at 4C. Do not freeze.
Clonality	Polyclonal
Preservative	0.09% Sodium Azide
Isotype	IgG
Purity	Immunogen affinity purified
Buffer	TBS and 0.1% BSA

Product Description

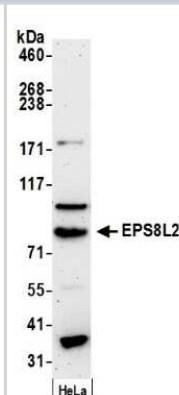
Host	Rabbit
Gene ID	64787
Gene Symbol	EPS8L2
Species	Human
Immunogen	The immunogen recognized by this antibody maps to a region between residue 665 and 715 of human epidermal growth factor receptor pathway substrate 8-like protein 2 using the numbering given in entry NP_073609.2 (GeneID 64787).

Product Application Details

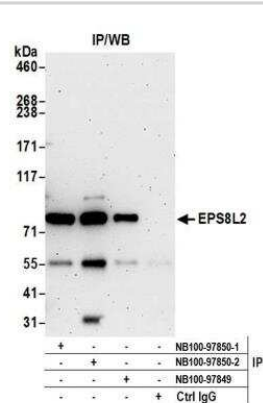
Applications	Western Blot, Immunoprecipitation
Recommended Dilutions	Western Blot 1:100-1:2000, Immunoprecipitation 1:10-1:500

Images

Western Blot: EPS8L2 Antibody [NB100-97850] - Detection of Human EPS8L2 by Western Blot. Samples: Whole cell lysate (50 ug) from HeLa cells prepared using NETN lysis buffer. Antibody: Affinity purified rabbit anti-EPS8L2 antibody NB100-97850 used for WB at 0.1 ug/ml. Detection: Chemiluminescence with an exposure time of 3 minutes.



Immunoprecipitation: EPS8L2 Antibody [NB100-97850] - Detection of human EPS8L2 by western blot of immunoprecipitates. Samples: Whole cell lysate (0.5 or 1.0 mg per IP reaction; 20% of IP loaded) from HeLa cells prepared using NETN lysis buffer. Antibodies: Affinity purified rabbit anti-EPS8L2 antibody NB100-97850 (lot 2) used for IP at 6 ug per reaction. EPS8L2 was also immunoprecipitated by a previous lot of this antibody (lot 1) and rabbit anti-EPS8L2 antibody NB100-97849. For blotting immunoprecipitated EPS8L2, NB100-97849 was used at 1 ug/ml. Detection: Chemiluminescence with an exposure time of 3 minutes.





Novus Biologicals USA

10730 E. Briarwood Avenue
Centennial, CO 80112
USA

Phone: 303.730.1950

Toll Free: 1.888.506.6887

Fax: 303.730.1966

nb-customerservice@bio-techne.com

Bio-Techne Canada

21 Canmotor Ave
Toronto, ON M8Z 4E6
Canada

Phone: 905.827.6400

Toll Free: 855.668.8722

Fax: 905.827.6402

canada.inquires@bio-techne.com

Bio-Techne Ltd

19 Barton Lane
Abingdon Science Park
Abingdon, OX14 3NB, United Kingdom

Phone: (44) (0) 1235 529449

Free Phone: 0800 37 34 15

Fax: (44) (0) 1235 533420

info.EMEA@bio-techne.com

General Contact Information

www.novusbio.com

Technical Support: nb-technical@bio-techne.com

Orders: nb-customerservice@bio-techne.com

General: novus@novusbio.com

Products Related to NB100-97850

HAF008	Goat anti-Rabbit IgG Secondary Antibody [HRP]
NB7160	Goat anti-Rabbit IgG (H+L) Secondary Antibody [HRP]
NBP2-24891	Rabbit IgG Isotype Control
H00064787-P01-10ug	Recombinant Human EPS8L2 GST (N-Term) Protein

Limitations

This product is for research use only and is not approved for use in humans or in clinical diagnosis. Primary Antibodies are guaranteed for 1 year from date of receipt.

For more information on our 100% guarantee, please visit www.novusbio.com/guarantee

Earn gift cards/discounts by submitting a review: www.novusbio.com/reviews/submit/NB100-97850

Earn gift cards/discounts by submitting a publication using this product:
www.novusbio.com/publications

