

Product Datasheet

MEPCE Antibody NB100-93420

Unit Size: 0.1 mg

Store at -20C. Avoid freeze-thaw cycles.

www.novusbio.com



technical@novusbio.com

Publications: 1

Protocols, Publications, Related Products, Reviews, Research Tools and Images at:
www.novusbio.com/NB100-93420

Updated 10/23/2024 v.20.1

Earn rewards for product
reviews and publications.

Submit a publication at www.novusbio.com/publications

Submit a review at www.novusbio.com/reviews/destination/NB100-93420



NB100-93420

MEPCE Antibody

Product Information	
Unit Size	0.1 mg
Concentration	0.5 mg/ml
Storage	Store at -20C. Avoid freeze-thaw cycles.
Clonality	Polyclonal
Preservative	0.02% Sodium Azide
Isotype	IgG
Purity	Immunogen affinity purified
Buffer	Tris saline (20 mM Tris pH 7.3, 150 mM NaCl), 0.5% BSA

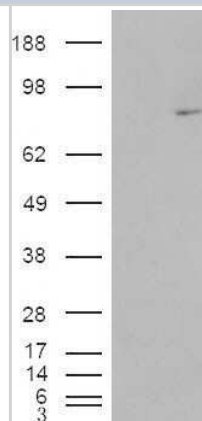
Product Description	
Host	Goat
Gene ID	56257
Gene Symbol	MEPCE
Species	Human, Rat
Specificity/Sensitivity	Western blot: Preliminary testing was unsuccessful on Human for this particular batch.
Immunogen	Peptide with sequence KQQRKFQYGN YCK corresponding to internal region according to NP_062552.2.

Product Application Details	
Applications	Western Blot, Immunohistochemistry, Immunohistochemistry-Paraffin, Peptide ELISA
Recommended Dilutions	Western Blot 1 - 3 ug/ml, Immunohistochemistry 5 - 10 ug/ml, Immunohistochemistry-Paraffin 5 - 10 ug/ml, Peptide ELISA Detection limit 1:2000
Application Notes	WB: Approx. 75 kDa band observed in rat testis lysates (calculated MW of 74.4 kDa band according to human NP_062552.2 and 75.3 kDa band according to rat XP_222048.4). In transfected HEK293 transiently expressing human MEPCE a band of approx. 75 kDa is observed. This band is not observed in the non-transfected HEK293. IHC-P: Human testis shows staining of the spermatids.

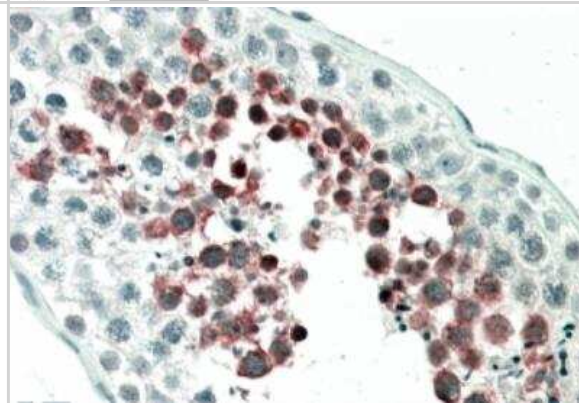


Images

Western Blot: MEPCE Antibody [NB100-93420] - HEK293 overexpressing MEPCE and probed with (mock transfection in first lane).



Immunohistochemistry-Paraffin: MEPCE Antibody [NB100-93420] - Analysis in human Testis shows staining of the spermatids.



Western Blot: MEPCE Antibody [NB100-93420] - (1ug/ml) staining of Rat Testis lysate (35ug protein in RIPA buffer). Primary incubation was 1 hour. Detected by chemiluminescence.



Publications

Jeronimo C, Forget D, Bouchard A et al. Systematic analysis of the protein interaction network for the human transcription machinery reveals the identity of the 7SK capping enzyme. *Mol Cell* 2007-07-20 [PMID: 17643375]



Novus Biologicals USA

10730 E. Briarwood Avenue
Centennial, CO 80112
USA
Phone: 303.730.1950
Toll Free: 1.888.506.6887
Fax: 303.730.1966
nb-customerservice@bio-techne.com

Bio-Techne Canada

21 Canmotor Ave
Toronto, ON M8Z 4E6
Canada
Phone: 905.827.6400
Toll Free: 855.668.8722
Fax: 905.827.6402
canada.inquires@bio-techne.com

Bio-Techne Ltd

19 Barton Lane
Abingdon Science Park
Abingdon, OX14 3NB, United Kingdom
Phone: (44) (0) 1235 529449
Free Phone: 0800 37 34 15
Fax: (44) (0) 1235 533420
info.EMEA@bio-techne.com

General Contact Information

www.novusbio.com
Technical Support: nb-technical@bio-techne.com
Orders: nb-customerservice@bio-techne.com
General: novus@novusbio.com

Products Related to NB100-93420

NBL1-13012	MEPCE Overexpression Lysate
HAF017	Rabbit anti-Goat IgG Secondary Antibody [HRP (Horseradish Peroxidase)]
HAF109	Donkey anti-Goat IgG Secondary Antibody [HRP (Horseradish Peroxidase)]
NB410-28088-1mg	Goat IgG Isotype Control

Limitations

This product is for research use only and is not approved for use in humans or in clinical diagnosis. Primary Antibodies are guaranteed for 1 year from date of receipt.

For more information on our 100% guarantee, please visit www.novusbio.com/guarantee

Earn gift cards/discounts by submitting a review: www.novusbio.com/reviews/submit/NB100-93420

Earn gift cards/discounts by submitting a publication using this product:
www.novusbio.com/publications



