

# Product Datasheet

## eIF3X Antibody NB100-93306

Unit Size: 0.1 ml

Store at 4C. Do not freeze.

[www.novusbio.com](http://www.novusbio.com)



[technical@novusbio.com](mailto:technical@novusbio.com)

### Publications: 6

Protocols, Publications, Related Products, Reviews, Research Tools and Images at:  
[www.novusbio.com/NB100-93306](http://www.novusbio.com/NB100-93306)

Updated 10/23/2024 v.20.1

Earn rewards for product  
reviews and publications.

Submit a publication at [www.novusbio.com/publications](http://www.novusbio.com/publications)

Submit a review at [www.novusbio.com/reviews/destination/NB100-93306](http://www.novusbio.com/reviews/destination/NB100-93306)



**NB100-93306****eIF3X Antibody**

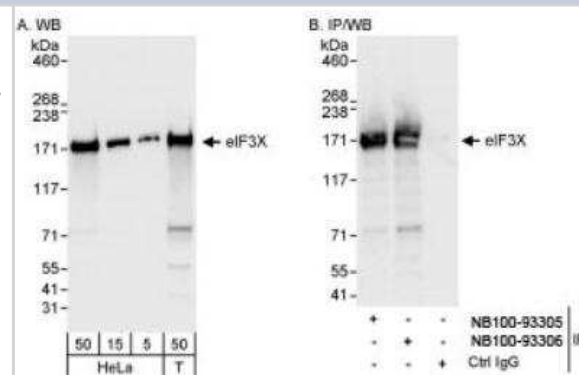
Product Information	
Unit Size	0.1 ml
Concentration	0.2 mg/ml
Storage	Store at 4C. Do not freeze.
Clonality	Polyclonal
Preservative	0.09% Sodium Azide
Isotype	IgG
Purity	Immunogen affinity purified
Buffer	TBS and 0.1% BSA

Product Description	
Host	Rabbit
Gene ID	23277
Gene Symbol	CLUH
Species	Human, Mouse
Reactivity Notes	Mouse reactivity reported in scientific literature (PMID: 25349259).
Immunogen	The immunogen recognized by this antibody maps to a region between residue 1259 and 1309 of human putative eukaryotic translation initiation factor 3 subunit using the numbering given in entry NP_056044.3 (GeneID 23277).

Product Application Details	
Applications	Western Blot, Immunocytochemistry/ Immunofluorescence, Immunoprecipitation
Recommended Dilutions	Western Blot 1:2000-1:10000, Immunocytochemistry/ Immunofluorescence, Immunoprecipitation 2 - 5 ug/mg lysate
Application Notes	Use in ICC/IF reported in scientific literature (PMID:32149416).

**Images**

Western Blot: eIF3X Antibody [NB100-93306] - Samples: Whole cell lysate from HeLa (5, 15 and 50 mcg for WB; 1 mg for IP, 20% of IP loaded) and 293T (T; 50 mcg) cells. Antibody: Affinity purified rabbit anti-eIF3X antibody NB100-93306 used for WB at 0.04 mcg/ml (A) and 1 mcg/ml (B) and used for IP at 3 mcg/mg lysate. eIF3X was also immunoprecipitated by rabbit anti-eIF3X antibody NB100-93305, which recognizes an upstream epitope. For blotting immunoprecipitated eIF3X, the ReliaBLOT (R) Reagents and Procedures (Cat. No. WB120) were used. Detection: Chemiluminescence with exposure times of 3 seconds (A) and 1 second (B).



## Publications

Marta Zaninello, Tim Schlegel, Hendrik Nolte, Mujeeb Pirzada, Elisa Savino, Esther Barth, Ines Klein, Hauke Wüstenberg, Tesmin Uddin, Lisa Wolff, Brunhilde Wirth, Helmar C. Lehmann, Jean-Michel Cioni, Thomas Langer, Elena I. Rugarli CLUH maintains functional mitochondria and translation in motoneuronal axons and prevents peripheral neuropathy *Science Advances* 2024-05-31 [PMID: 38809982]

Schatton D, Di Pietro G, Szczepanowska K et al. CLUH controls astrin-1 expression to couple mitochondrial metabolism to cell cycle progression *eLife* 2022-05-13 [PMID: 35559794] (Block/Neutralize)

HEmono M, Haller A, Chicher J et al. The interactome of CLUH reveals its association to SPAG5 and its co-translational proximity to mitochondrial proteins *BMC biology* 2022-01-10 [PMID: 35012549] (RIP, ICC/IF, WB, Mouse, Human)

Wakim J, Goudenege D et al. CLUH couples mitochondrial distribution to the energetic and metabolic status. *J Cell Sci* 2017-01-06 [PMID: 28424233] (WB, Human)

Pla-Martin D, Schatton D, Wiederstein JI et Al. CLUH granules coordinate translation of mitochondrial proteins with mTORC1 signaling and mitophagy *EMBO J.* 2020-03-09 [PMID: 32149416] (WB, ICC/IF, Mouse)

Gao J, Schatton D, Martinelli P et al. CLUH regulates mitochondrial biogenesis by binding mRNAs of nuclear-encoded mitochondrial proteins. CLUH regulates mitochondrial biogenesis by binding mRNAs of nuclear-encoded mitochondrial proteins. 2014-10-27 [PMID: 25349259] (WB, Mouse, Human)





### **Novus Biologicals USA**

10730 E. Briarwood Avenue  
Centennial, CO 80112  
USA  
Phone: 303.730.1950  
Toll Free: 1.888.506.6887  
Fax: 303.730.1966  
nb-customerservice@bio-techne.com

### **Bio-Techne Canada**

21 Canmotor Ave  
Toronto, ON M8Z 4E6  
Canada  
Phone: 905.827.6400  
Toll Free: 855.668.8722  
Fax: 905.827.6402  
canada.inquires@bio-techne.com

### **Bio-Techne Ltd**

19 Barton Lane  
Abingdon Science Park  
Abingdon, OX14 3NB, United Kingdom  
Phone: (44) (0) 1235 529449  
Free Phone: 0800 37 34 15  
Fax: (44) (0) 1235 533420  
info.EMEA@bio-techne.com

### **General Contact Information**

www.novusbio.com  
Technical Support: nb-technical@bio-techne.com  
Orders: nb-customerservice@bio-techne.com  
General: novus@novusbio.com

### **Products Related to NB100-93306**

---

HAF008	Goat anti-Rabbit IgG Secondary Antibody [HRP]
NB7160	Goat anti-Rabbit IgG (H+L) Secondary Antibody [HRP]
NBP2-24891	Rabbit IgG Isotype Control
NBP2-54967PEP	eIF3X Recombinant Protein Antigen

---

### **Limitations**

This product is for research use only and is not approved for use in humans or in clinical diagnosis. Primary Antibodies are guaranteed for 1 year from date of receipt.

For more information on our 100% guarantee, please visit [www.novusbio.com/guarantee](http://www.novusbio.com/guarantee)

Earn gift cards/discounts by submitting a review: [www.novusbio.com/reviews/submit/NB100-93306](http://www.novusbio.com/reviews/submit/NB100-93306)

Earn gift cards/discounts by submitting a publication using this product:  
[www.novusbio.com/publications](http://www.novusbio.com/publications)

