

Product Datasheet

ASH1 Antibody - BSA Free NB100-93290

Unit Size: 100 ul

Store at 4C. Do not freeze.

www.novusbio.com



technical@novusbio.com

Publications: 3

Protocols, Publications, Related Products, Reviews, Research Tools and Images at:
www.novusbio.com/NB100-93290

Updated 2/21/2025 v.20.1

Earn rewards for product
reviews and publications.

Submit a publication at www.novusbio.com/publications

Submit a review at www.novusbio.com/reviews/destination/NB100-93290



NB100-93290

ASH1 Antibody - BSA Free

Product Information	
Unit Size	100 ul
Concentration	1.0 mg/ml
Storage	Store at 4C. Do not freeze.
Clonality	Polyclonal
Preservative	0.09% Sodium Azide
Isotype	IgG
Purity	Immunogen affinity purified
Buffer	Tris-Citrate/Phosphate (pH 7.0 - 8.0)

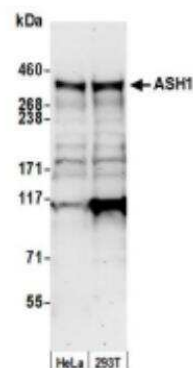
Product Description	
Host	Rabbit
Gene ID	55870
Gene Symbol	ASH1L
Species	Human, Mouse
Immunogen	The immunogen recognized by this antibody maps to a region between residue 2919 and 2969 of human absent, small and homeotic disks protein 1 using the numbering given in entry CAI12722.1 (GeneID 55870).

Product Application Details	
Applications	Western Blot, Immunohistochemistry, Immunohistochemistry-Paraffin, Immunoprecipitation
Recommended Dilutions	Western Blot 1:2000-1:10000, Immunohistochemistry 1:1000 - 1:5000, Immunoprecipitation 2-5 ug/mg lysate, Immunohistochemistry-Paraffin 1:1000 - 1:5000
Application Notes	Epitope retrieval with citrate buffer pH6.0 is recommended for FFPE tissue sections.

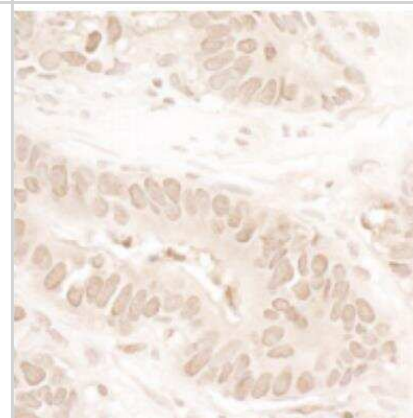


Images

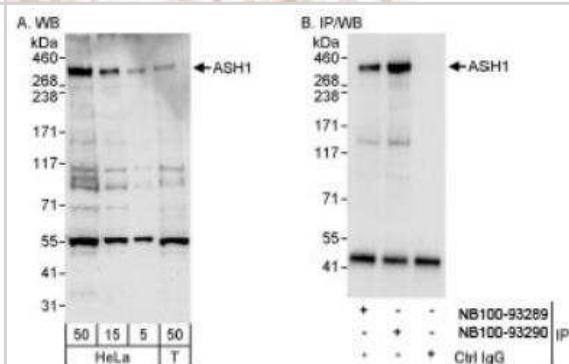
Western Blot: ASH1 Antibody [NB100-93290] - Whole cell lysate (50 ug) from HeLa and HEK293T cells prepared using NETN lysis buffer. Antibody: Affinity purified rabbit anti-ASH1 antibody used for WB at 0.1 ug/ml. Detection: Chemiluminescence with an exposure time of 30 seconds



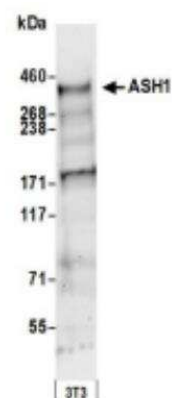
Immunohistochemistry-Paraffin: ASH1 Antibody [NB100-93290] - FFPE section of human colon carcinoma. Antibody: Affinity purified rabbit anti-ASH1 used at a dilution of 1:1,000 (1ug/ml). Detection: DAB



Western Blot: ASH1 Antibody [NB100-93290] - Detection of Human ASH1 on HeLa whole cell lysate using NB100-93290. ASH1 was also immunoprecipitated by rabbit anti-ASH1 antibody NB100-93289.



Western Blot: ASH1 Antibody [NB100-93290] - Whole cell lysate (50 ug) from mouse NIH3T3 cells prepared using NETN lysis buffer. Antibody: Affinity purified rabbit antiASH1 antibody used for WB at 0.4 ug/ml. Detection: Chemiluminescence with an exposure time of 30 seconds.



Publications

Yan Y, Tian M, Li M, Zhou G et Al. ASH1L haploinsufficiency results in autistic-like phenotypes in mice and links Eph receptor gene to autism spectrum disorder Neuron 2022-01-26 [PMID: 35081333]

Du Y, Wu S, Xi S et al. ASH1L in Hepatoma Cells and Hepatic Stellate Cells Promotes Fibrosis-Associated Hepatocellular Carcinoma by Modulating Tumor-Associated Macrophages. Advanced science (Weinheim, Baden-Wurttemberg, Germany) 2024-10-08 [PMID: 39377228]

Liu S, Tian M, He F et al. Mutations in ASH1L confer susceptibility to Tourette syndrome Mol. Psychiatry 2019-10-31 [PMID: 31673123] (WB, Mouse)





Novus Biologicals USA

10730 E. Briarwood Avenue
Centennial, CO 80112
USA
Phone: 303.730.1950
Toll Free: 1.888.506.6887
Fax: 303.730.1966
nb-customerservice@bio-techne.com

Bio-Techne Canada

21 Canmotor Ave
Toronto, ON M8Z 4E6
Canada
Phone: 905.827.6400
Toll Free: 855.668.8722
Fax: 905.827.6402
canada.inquires@bio-techne.com

Bio-Techne Ltd

19 Barton Lane
Abingdon Science Park
Abingdon, OX14 3NB, United Kingdom
Phone: (44) (0) 1235 529449
Free Phone: 0800 37 34 15
Fax: (44) (0) 1235 533420
info.EMEA@bio-techne.com

General Contact Information

www.novusbio.com
Technical Support: nb-technical@bio-techne.com
Orders: nb-customerservice@bio-techne.com
General: novus@novusbio.com

Products Related to NB100-93290

HAF008	Goat anti-Rabbit IgG Secondary Antibody [HRP]
NB7160	Goat anti-Rabbit IgG (H+L) Secondary Antibody [HRP]
NBP2-24891	Rabbit IgG Isotype Control
AF933	ACE-2 Antibody [Unconjugated]

Limitations

This product is for research use only and is not approved for use in humans or in clinical diagnosis. Primary Antibodies are guaranteed for 1 year from date of receipt.

For more information on our 100% guarantee, please visit www.novusbio.com/guarantee

Earn gift cards/discounts by submitting a review: www.novusbio.com/reviews/submit/NB100-93290

Earn gift cards/discounts by submitting a publication using this product:
www.novusbio.com/publications

