

Product Datasheet

Synaptotagmin 2 Antibody

NB100-91297

Unit Size: 0.1 ml

Store at 4C short term. Aliquot and store at -20C long term. Avoid freeze-thaw cycles.

www.novusbio.com



technical@novusbio.com

Protocols, Publications, Related Products, Reviews, Research Tools and Images at:
www.novusbio.com/NB100-91297

Updated 10/23/2024 v.20.1

Earn rewards for product
reviews and publications.

Submit a publication at www.novusbio.com/publications

Submit a review at www.novusbio.com/reviews/destination/NB100-91297



NB100-91297

Synaptotagmin 2 Antibody

Product Information	
Unit Size	0.1 ml
Concentration	This product is unpurified. The exact concentration of antibody is not quantifiable.
Storage	Store at 4C short term. Aliquot and store at -20C long term. Avoid freeze-thaw cycles.
Clonality	Polyclonal
Preservative	No Preservative
Reconstitution Instructions	Reconstitute in 0.1 ml of sterile water. Centrifuge to remove any insoluble material. Glycerol may be added (1:1) for additional stability. Please note the sample size is provided in reconstituted format.
Isotype	IgG
Purity	Unpurified
Buffer	Lyophilized from whole antisera

Product Description	
Host	Rabbit
Gene ID	127833
Gene Symbol	SYT2
Species	Human, Mouse, Rat, Primate
Reactivity Notes	Marmoset
Immunogen	A synthetic peptide from rat Synaptotagmin 2 conjugated to blue carrier protein was used as the antigen.

Product Application Details	
Applications	Western Blot, Immunohistochemistry, Immunohistochemistry-Paraffin
Recommended Dilutions	Western Blot 1:1000-1:2000, Immunohistochemistry 1:1000-1:2000, Immunohistochemistry-Paraffin 1:1000-1:2000

Images

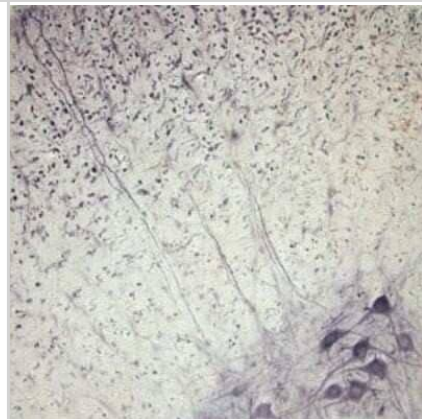
Immunohistochemistry: Synaptotagmin 2 Antibody [NB100-91297] - IHC on rat spinal cord using Rabbit antibody to Synaptotagmin 2 (80-130) at 1 : 3000 dilution. Pre-absorption of the antibody with the immunising peptide completely abolishes the immunostaining (not shown).



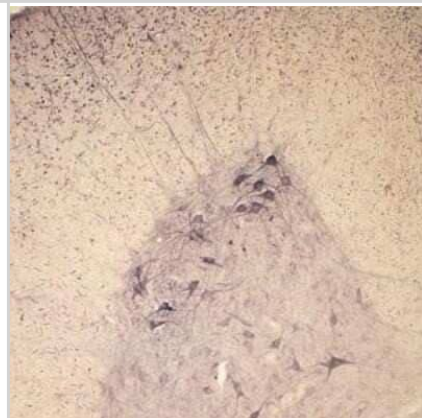
Immunohistochemistry: Synaptotagmin 2 Antibody [NB100-91297] - IHC on rat spinal cord using Rabbit antibody to rat, mouse Synaptotagmin-2: whole serum at 1:3000 dilution. Pre-absorption of the antibody with the immunising peptide completely abolishes the immunostaining (not shown).



Immunohistochemistry: Synaptotagmin 2 Antibody [NB100-91297] - IHC on rat spinal cord using Rabbit antibody to rat, mouse Synaptotagmin-2 (Synaptotagmin II, SytII, SYT2): whole serum at 1 : 3000 dilution. Pre-absorption of the antibody with the immunising peptide completely abolishes the immunostaining (not shown).



Immunohistochemistry: Synaptotagmin 2 Antibody [NB100-91297] - IHC on rat spinal cord using Rabbit antibody to rat, mouse Synaptotagmin-2 (Synaptotagmin II, SytII, SYT2): whole serum at 1 : 3000 dilution. Pre-absorption of the antibody with the immunising peptide completely abolishes the immunostaining (not shown).



Immunohistochemistry: Synaptotagmin 2 Antibody [NB100-91297] - IHC on rat spinal cord using Rabbit antibody to rat, mouse Synaptotagmin-2 (Synaptotagmin II, SytII, SYT2): whole serum at 1 : 3000 dilution. Pre-absorption of the antibody with the immunising peptide completely abolishes the immunostaining (not shown).





Novus Biologicals USA

10730 E. Briarwood Avenue
Centennial, CO 80112
USA
Phone: 303.730.1950
Toll Free: 1.888.506.6887
Fax: 303.730.1966
nb-customerservice@bio-techne.com

Bio-Techne Canada

21 Canmotor Ave
Toronto, ON M8Z 4E6
Canada
Phone: 905.827.6400
Toll Free: 855.668.8722
Fax: 905.827.6402
canada.inquires@bio-techne.com

Bio-Techne Ltd

19 Barton Lane
Abingdon Science Park
Abingdon, OX14 3NB, United Kingdom
Phone: (44) (0) 1235 529449
Free Phone: 0800 37 34 15
Fax: (44) (0) 1235 533420
info.EMEA@bio-techne.com

General Contact Information

www.novusbio.com
Technical Support: nb-technical@bio-techne.com
Orders: nb-customerservice@bio-techne.com
General: novus@novusbio.com

Products Related to NB100-91297

HAF008	Goat anti-Rabbit IgG Secondary Antibody [HRP]
NB7160	Goat anti-Rabbit IgG (H+L) Secondary Antibody [HRP]
NBP2-24891	Rabbit IgG Isotype Control
NBP2-49403PEP	Synaptotagmin 2 Recombinant Protein Antigen

Limitations

This product is for research use only and is not approved for use in humans or in clinical diagnosis. Primary Antibodies are guaranteed for 1 year from date of receipt.

For more information on our 100% guarantee, please visit www.novusbio.com/guarantee

Earn gift cards/discounts by submitting a review: www.novusbio.com/reviews/submit/NB100-91297

Earn gift cards/discounts by submitting a publication using this product:
www.novusbio.com/publications

