

Product Datasheet

SEC22B Antibody - Azide and BSA Free NB100-91277

Unit Size: 0.5 mg

Store at 4C short term. Aliquot and store at -20C long term. Avoid freeze-thaw cycles.

www.novusbio.com



technical@novusbio.com

Publications: 1

Protocols, Publications, Related Products, Reviews, Research Tools and Images at:
www.novusbio.com/NB100-91277

Updated 10/23/2024 v.20.1

Earn rewards for product
reviews and publications.

Submit a publication at www.novusbio.com/publications

Submit a review at www.novusbio.com/reviews/destination/NB100-91277



NB100-91277

SEC22B Antibody - Azide and BSA Free

Product Information

Unit Size	0.5 mg
Concentration	LYOPH mg/ml
Storage	Store at 4C short term. Aliquot and store at -20C long term. Avoid freeze-thaw cycles.
Clonality	Polyclonal
Preservative	No Preservative
Reconstitution Instructions	Reconstitute 0.5 mg size in 0.5 ml of sterile water. Centrifuge to remove any insoluble material. Glycerol may be added (1:1) for additional stability. Please note the 0.1 mg size is provided in reconstituted format.
Isotype	IgG
Purity	Ammonium sulfate precipitation
Buffer	Lyophilized from PBS

Product Description

Host	Rabbit
Gene ID	9554
Gene Symbol	SEC22B
Species	Human, Mouse, Rat
Immunogen	A synthetic peptide from amino acid region 2-50 of human SEC22B conjugated to blue carrier protein was used as the antigen. The peptide is homologous in rat and mouse.

Product Application Details

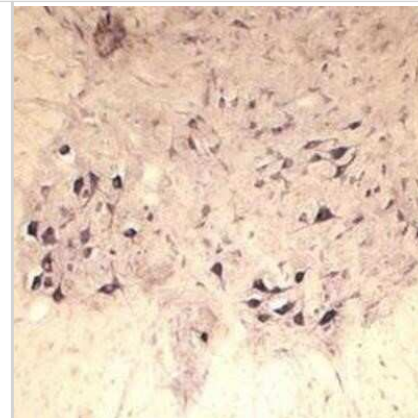
Applications	Western Blot, Immunohistochemistry, Immunohistochemistry-Frozen, Immunohistochemistry-Paraffin
Recommended Dilutions	Western Blot 10-50 ug/ml, Immunohistochemistry 10-50 ug/ml, Immunohistochemistry-Paraffin 1:10-1:500, Immunohistochemistry-Frozen 1:10-1:500

Images

Immunohistochemistry-Paraffin: SEC22B Antibody [NB100-91277] - IHC on rat spinal cord using Rabbit antibody to SEC22B at a concentration of 30 ug/ml. Pre-absorption of the antibody with the immunising peptide completely abolishes the immunostaining (not shown).



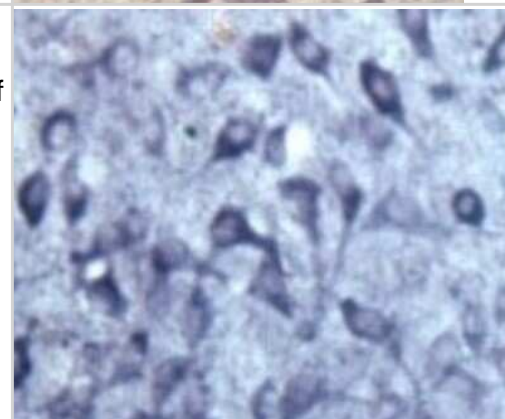
Immunohistochemistry: SEC22B Antibody [NB100-91277] - IHC on rat spinal cord using Rabbit antibody to Vesicle-trafficking protein SEC22b (SEC22B, SEC22L1, ERS24): IgG at a concentration of 30 ug/ml. Pre-absorption of the antibody with the immunising peptide completely abolishes the immunostaining (not shown).



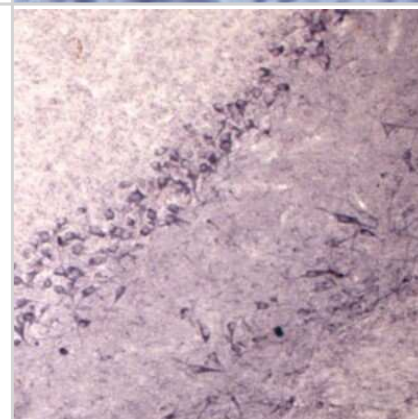
Immunohistochemistry: SEC22B Antibody [NB100-91277] - rat spinal cord using Rabbit antibody to Vesicle-trafficking protein SEC22b (SEC22B, SEC22L1, ERS24): IgG at a concentration of 30 ug/ml. Pre-absorption of the antibody with the immunizing peptide completely abolishes the immunostaining (not shown).



Immunohistochemistry: SEC22B Antibody [NB100-91277] - rat brain using Rabbit antibody to Vesicle-trafficking protein SEC22b (SEC22B, SEC22L1, ERS24): IgG at a concentration of 30 ug/ml. Pre-absorption of the antibody with the immunizing peptide completely abolishes the immunostaining (not shown).



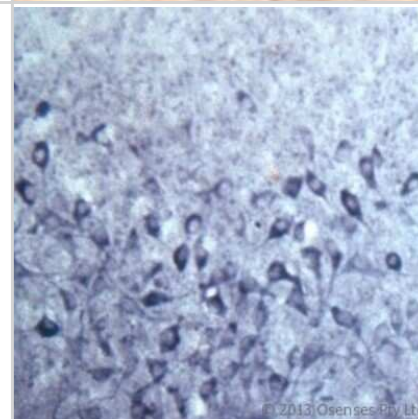
Immunohistochemistry: SEC22B Antibody [NB100-91277] - rat spinal cord using Rabbit antibody to Vesicle-trafficking protein SEC22b (SEC22B, SEC22L1, ERS24): IgG at a concentration of 30 ug/ml. Pre-absorption of the antibody with the immunizing peptide completely abolishes the immunostaining (not shown).



Immunohistochemistry: SEC22B Antibody [NB100-91277] - rat spinal cord using Rabbit antibody to Vesicle-trafficking protein SEC22b (SEC22B, SEC22L1, ERS24): IgG at a concentration of 30 ug/ml. Pre-absorption of the antibody with the immunizing peptide completely abolishes the immunostaining (not shown).



Immunohistochemistry: SEC22B Antibody [NB100-91277] - IHC on rat brain using Rabbit antibody to SEC22B at a concentration of 30 ug/ml. Pre-absorption of the antibody with the immunising peptide completely abolishes the immunostaining (not shown).



Immunohistochemistry: SEC22B Antibody [NB100-91277] - IHC on rat spinal cord using Rabbit antibody to SEC22B at a concentration of 30 ug/ml. Pre-absorption of the antibody with the immunising peptide completely abolishes the immunostaining (not shown).



Publications

Stempels FC, Jiang M, Warner HM et al. Giant worm-shaped ESCRT scaffolds surround actin-independent integrin clusters The Journal of cell biology 2023-07-03 [PMID: 37200023] (ICC/IF, Human)



Novus Biologicals USA

10730 E. Briarwood Avenue
Centennial, CO 80112
USA
Phone: 303.730.1950
Toll Free: 1.888.506.6887
Fax: 303.730.1966
nb-customerservice@bio-techne.com

Bio-Techne Canada

21 Canmotor Ave
Toronto, ON M8Z 4E6
Canada
Phone: 905.827.6400
Toll Free: 855.668.8722
Fax: 905.827.6402
canada.inquires@bio-techne.com

Bio-Techne Ltd

19 Barton Lane
Abingdon Science Park
Abingdon, OX14 3NB, United Kingdom
Phone: (44) (0) 1235 529449
Free Phone: 0800 37 34 15
Fax: (44) (0) 1235 533420
info.EMEA@bio-techne.com

General Contact Information

www.novusbio.com
Technical Support: nb-technical@bio-techne.com
Orders: nb-customerservice@bio-techne.com
General: novus@novusbio.com

Products Related to NB100-91277

HAF008	Goat anti-Rabbit IgG Secondary Antibody [HRP]
NB7160	Goat anti-Rabbit IgG (H+L) Secondary Antibody [HRP]
NBP2-24891	Rabbit IgG Isotype Control
NBP2-23454	Recombinant Human SEC22B His Protein

Limitations

This product is for research use only and is not approved for use in humans or in clinical diagnosis. Primary Antibodies are guaranteed for 1 year from date of receipt.

For more information on our 100% guarantee, please visit www.novusbio.com/guarantee

Earn gift cards/discounts by submitting a review: www.novusbio.com/reviews/submit/NB100-91277

Earn gift cards/discounts by submitting a publication using this product:
www.novusbio.com/publications

