

# Product Datasheet

## Als2 Antibody NB100-885

Unit Size: 0.1 mg

Store at -20C. Avoid freeze-thaw cycles.

[www.novusbio.com](http://www.novusbio.com)



[technical@novusbio.com](mailto:technical@novusbio.com)

### Publications: 2

Protocols, Publications, Related Products, Reviews, Research Tools and Images at:  
[www.novusbio.com/NB100-885](http://www.novusbio.com/NB100-885)

Updated 10/23/2024 v.20.1

Earn rewards for product  
reviews and publications.

Submit a publication at [www.novusbio.com/publications](http://www.novusbio.com/publications)

Submit a review at [www.novusbio.com/reviews/destination/NB100-885](http://www.novusbio.com/reviews/destination/NB100-885)



**NB100-885**

Als2 Antibody

**Product Information**

<b>Unit Size</b>	0.1 mg
<b>Concentration</b>	0.5 mg/ml
<b>Storage</b>	Store at -20C. Avoid freeze-thaw cycles.
<b>Clonality</b>	Polyclonal
<b>Preservative</b>	0.02% Sodium Azide
<b>Isotype</b>	IgG
<b>Purity</b>	Immunogen affinity purified
<b>Buffer</b>	Tris saline (20 mM Tris pH 7.3, 150 mM NaCl), 0.5% BSA

**Product Description**

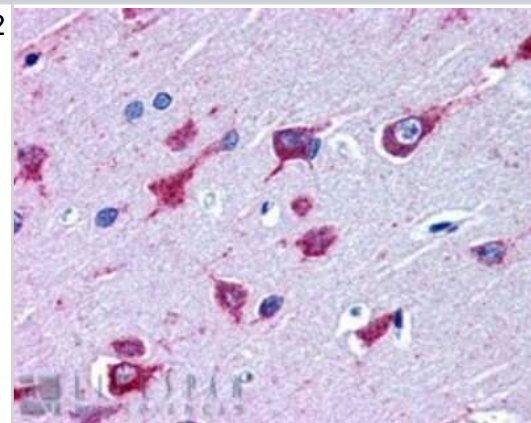
<b>Host</b>	Goat
<b>Gene ID</b>	57679
<b>Gene Symbol</b>	ALS2
<b>Species</b>	Human, Mouse
<b>Reactivity Notes</b>	Mouse reactivity reported in scientific literature (PMID: 22982304).
<b>Immunogen</b>	Peptide with sequence LKACYYQIQREKLN corresponding to C-Terminus according to NP_065970.2.

**Product Application Details**

<b>Applications</b>	Immunohistochemistry, Immunohistochemistry-Paraffin, Peptide ELISA
<b>Recommended Dilutions</b>	Immunohistochemistry, Immunohistochemistry-Paraffin 3 - 5 ug/ml, Peptide ELISA Detection limit 1:8000
<b>Application Notes</b>	WB: No signal obtained yet but low background observed in human brain extracts at upto 1 ug/ml. IHC-P: Human cortex shows pixulate cytoplasm staining in some neuronal cells.

**Images**

Immunohistochemistry: Als2 Antibody [NB100-885] - IHC staining of Als2 in paraffin embedded Human Cortex using NB100-885 at 3.8ug/ml. Steamed antigen retrieval with citrate buffer pH 6, AP-staining.

**Publications**

Yang Y, Hentati A, Deng HX et al. The gene encoding alsin, a protein with three guanine-nucleotide exchange factor domains, is mutated in a form of recessive amyotrophic lateral sclerosis. Nat Genet 2001-10-01 [PMID: 11586297]

Cobanoglu G, Ozansoy M, Nazli Ba?ak A. Are alsin and spartin novel interaction partners? Biochem Biophys Res Commun 2012-09-07 [PMID: 22982304] (ICC/IF, Mouse)



### Novus Biologicals USA

10730 E. Briarwood Avenue  
Centennial, CO 80112  
USA  
Phone: 303.730.1950  
Toll Free: 1.888.506.6887  
Fax: 303.730.1966  
nb-customerservice@bio-techne.com

### Bio-Techne Canada

21 Canmotor Ave  
Toronto, ON M8Z 4E6  
Canada  
Phone: 905.827.6400  
Toll Free: 855.668.8722  
Fax: 905.827.6402  
canada.inquires@bio-techne.com

### Bio-Techne Ltd

19 Barton Lane  
Abingdon Science Park  
Abingdon, OX14 3NB, United Kingdom  
Phone: (44) (0) 1235 529449  
Free Phone: 0800 37 34 15  
Fax: (44) (0) 1235 533420  
info.EMEA@bio-techne.com

### General Contact Information

www.novusbio.com  
Technical Support: nb-technical@bio-techne.com  
Orders: nb-customerservice@bio-techne.com  
General: novus@novusbio.com

### Products Related to NB100-885

HAF017	Rabbit anti-Goat IgG Secondary Antibody [HRP (Horseradish Peroxidase)]
HAF109	Donkey anti-Goat IgG Secondary Antibody [HRP (Horseradish Peroxidase)]
NB410-28088-1mg	Goat IgG Isotype Control
NBP2-14284PEP	Als2 Recombinant Protein Antigen

### Limitations

This product is for research use only and is not approved for use in humans or in clinical diagnosis. Primary Antibodies are guaranteed for 1 year from date of receipt.

For more information on our 100% guarantee, please visit [www.novusbio.com/guarantee](http://www.novusbio.com/guarantee)

Earn gift cards/discounts by submitting a review: [www.novusbio.com/reviews/submit/NB100-885](http://www.novusbio.com/reviews/submit/NB100-885)

Earn gift cards/discounts by submitting a publication using this product:  
[www.novusbio.com/publications](http://www.novusbio.com/publications)



