

# Product Datasheet

## EPS15R Antibody NB100-88149

Unit Size: 0.1 ml

Store at 4C. Do not freeze.

[www.novusbio.com](http://www.novusbio.com)



[technical@novusbio.com](mailto:technical@novusbio.com)

### Publications: 1

Protocols, Publications, Related Products, Reviews, Research Tools and Images at:  
[www.novusbio.com/NB100-88149](http://www.novusbio.com/NB100-88149)

Updated 9/9/2025 v.20.1

Earn rewards for product  
reviews and publications.

Submit a publication at [www.novusbio.com/publications](http://www.novusbio.com/publications)

Submit a review at [www.novusbio.com/reviews/destination/NB100-88149](http://www.novusbio.com/reviews/destination/NB100-88149)



**NB100-88149**

## EPS15R Antibody

Product Information	
Unit Size	0.1 ml
Concentration	0.2 mg/ml
Storage	Store at 4C. Do not freeze.
Clonality	Polyclonal
Preservative	0.09% Sodium Azide
Isotype	IgG
Purity	Immunogen affinity purified
Buffer	TBS and 0.1% BSA

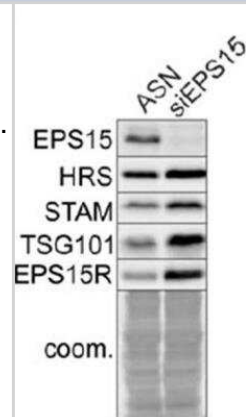
Product Description	
Description	Novus Biologicals Rabbit EPS15R Antibody (NB100-88149) is a polyclonal antibody validated for use in WB and IP. Anti-EPS15R Antibody: Cited in 1 publication. All Novus Biologicals antibodies are covered by our 100% guarantee.
Host	Rabbit
Gene ID	58513
Gene Symbol	EPS15L1
Species	Human
Immunogen	The immunogen recognized by this antibody maps to a region between residue 814 and 864 of human epidermal growth factor receptor pathway substrate 15-like 1 using the numbering given in entry NP_067058.1 (GeneID 58513).

Product Application Details	
Applications	Western Blot, Immunoprecipitation
Recommended Dilutions	Western Blot 1:2000-1:10000, Immunoprecipitation 2 - 5 ug/mg lysate

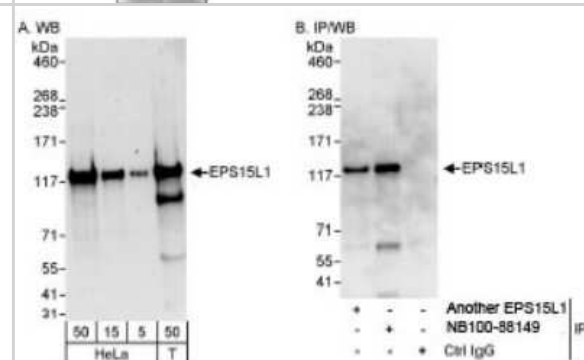


## Images

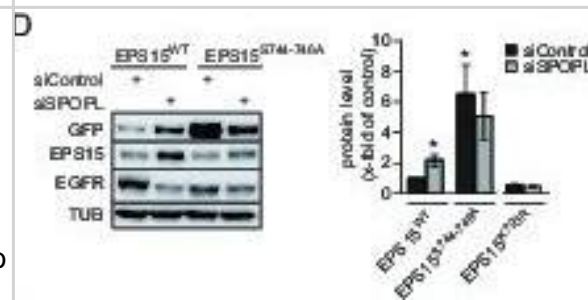
Western Blot: EPS15R Antibody [NB100-88149] - EPS15 depletion stabilizes ESCRT components HRS, STAM and TSG101. Image collected and cropped by CiteAb from the following publication (<https://elifesciences.org/articles/13841>) licensed under a CC-BY license.



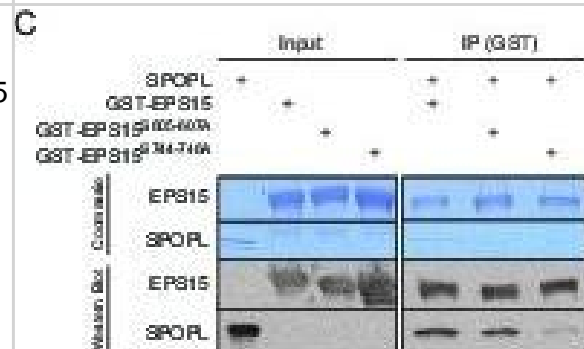
Western Blot: EPS15R Antibody [NB100-88149] - Detection of Human EPS15L1 on HeLa whole cell lysate using NB100-88149. EPS15L1 was also immunoprecipitated by another rabbit anti-EPS15L1 antibody.



Western Blot: EPS15R Antibody [NB100-88149] - EPS15 is targeted via a SPOP/SPOPL binding consensus motif. (D) HeLa cells stably expressing GFP-tagged wild-type EPS15, EPS15S744-S746A or the EPS15K793R mutants from a doxycycline-inducible promoter transfected as indicated (+) with control siRNA or siRNA depleting SPOPL. The levels of EPS15-GFP, EGFR & for control tubulin (TUB) analyzed by immunoblotting with specific antibodies. Experiments quantified in Fiji & the EPS15 levels plotted as fold-increase compared to controls. Data mean  $\pm$  SEM, N = 4. \* $p$  $\leq$ 0.05. Note that SPOPL depletion does not further increase the levels of both EPS15 mutants. Image collected & cropped by CiteAb from the following publication (<https://elifesciences.org/articles/13841>), licensed under a CC-BY license. Not internally tested by Novus Biologicals.



Western Blot: EPS15R Antibody [NB100-88149] - EPS15 is targeted via a SPOP/SPOPL binding consensus motif. (C) Purified SPOPL was incubated as indicated with GST-tagged wild-type EPS15 or GST-EPS15 mutants, where the predicted SPOPL binding motifs have been mutated individually (GST-EPS15S605-S607A & EPS15S744-S746A, respectively), pulled down with glutathione sepharose (IP [GST]) & bound proteins analyzed by Coomassie blue staining (upper panel) & immunoblotting (lower panels). Note that SPOPL readily binds to GST-EPS15 & GST-EPS15S605-S607A, but this interaction is strongly reduced with GST-EPS15S744-S746A mutant. Image collected & cropped by CiteAb from the following publication (<https://elifesciences.org/articles/13841>), licensed under a CC-BY license. Not internally tested by Novus Biologicals.



## Publications

Gschweithl M, Ulbricht A, Barnes CA et al. A SPOPL/Cullin-3 ubiquitin ligase complex regulates endocytic trafficking by targeting EPS15 at endosomes. *Elife*. 2016-04-22 [PMID: 27008177] (WB, Human)



### **Novus Biologicals USA**

10730 E. Briarwood Avenue  
Centennial, CO 80112  
USA

Phone: 303.730.1950

Toll Free: 1.888.506.6887

Fax: 303.730.1966

[nb-customerservice@bio-techne.com](mailto:nb-customerservice@bio-techne.com)

### **Bio-Techne Canada**

21 Canmotor Ave  
Toronto, ON M8Z 4E6  
Canada

Phone: 905.827.6400

Toll Free: 855.668.8722

Fax: 905.827.6402

[canada.inquires@bio-techne.com](mailto:canada.inquires@bio-techne.com)

### **Bio-Techne Ltd**

19 Barton Lane  
Abingdon Science Park  
Abingdon, OX14 3NB, United Kingdom

Phone: (44) (0) 1235 529449

Free Phone: 0800 37 34 15

Fax: (44) (0) 1235 533420

[info.EMEA@bio-techne.com](mailto:info.EMEA@bio-techne.com)

### **General Contact Information**

[www.novusbio.com](http://www.novusbio.com)

Technical Support: [nb-technical@bio-techne.com](mailto:nb-technical@bio-techne.com)

Orders: [nb-customerservice@bio-techne.com](mailto:nb-customerservice@bio-techne.com)

General: [novus@novusbio.com](mailto:novus@novusbio.com)

### **Products Related to NB100-88149**

---

NBL1-10302	EPS15R Overexpression Lysate
NBP2-33376H	Blue Marker Antibody (6F4-F6) [HRP]
HAF008	Goat anti-Rabbit IgG Secondary Antibody [HRP]
NB7160	Goat anti-Rabbit IgG (H+L) Secondary Antibody [HRP]
NBP2-24891	Rabbit IgG Isotype Control

---

### **Limitations**

This product is for research use only and is not approved for use in humans or in clinical diagnosis. Primary Antibodies are guaranteed for 1 year from date of receipt.

For more information on our 100% guarantee, please visit [www.novusbio.com/guarantee](http://www.novusbio.com/guarantee)

Earn gift cards/discounts by submitting a review: [www.novusbio.com/reviews/submit/NB100-88149](http://www.novusbio.com/reviews/submit/NB100-88149)

Earn gift cards/discounts by submitting a publication using this product:  
[www.novusbio.com/publications](http://www.novusbio.com/publications)



