

Product Datasheet

Cyclin L2 Antibody NB100-87009

Unit Size: 0.1 ml

Store at 4C. Do not freeze.

www.novusbio.com



technical@novusbio.com

Publications: 3

Protocols, Publications, Related Products, Reviews, Research Tools and Images at:
www.novusbio.com/NB100-87009

Updated 9/9/2025 v.20.1

Earn rewards for product
reviews and publications.

Submit a publication at www.novusbio.com/publications

Submit a review at www.novusbio.com/reviews/destination/NB100-87009



NB100-87009**Cyclin L2 Antibody**

Product Information	
Unit Size	0.1 ml
Concentration	0.2 mg/ml
Storage	Store at 4C. Do not freeze.
Clonality	Polyclonal
Preservative	0.09% Sodium Azide
Isotype	IgG
Purity	Immunogen affinity purified
Buffer	TBS and 0.1% BSA

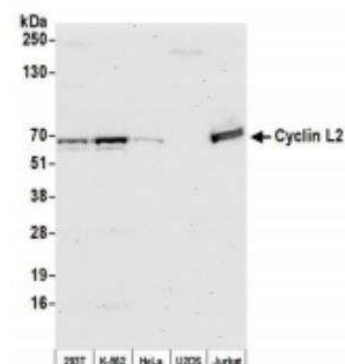
Product Description	
Description	Novus Biologicals Rabbit Cyclin L2 Antibody (NB100-87009) is a polyclonal antibody validated for use in WB and IP. Anti-Cyclin L2 Antibody: Cited in 3 publications. All Novus Biologicals antibodies are covered by our 100% guarantee.
Host	Rabbit
Gene ID	81669
Gene Symbol	CCNL2
Species	Human
Immunogen	The immunogen recognized by this antibody maps to a region between residue 470 and 520 of human cyclin L2 using the numbering given in entry NP_112199.2 (GeneID 81669).

Product Application Details	
Applications	Western Blot, Immunoblotting, Immunoprecipitation, Knockdown Validated
Recommended Dilutions	Western Blot 1:2000-1:10000, Immunoprecipitation 2-10 ug/mg lysate, Immunoblotting, Knockdown Validated
Application Notes	Knockdown validation (PMID: 31852782). Use in immunoblotting reported in scientific literature (PMID:31852782).

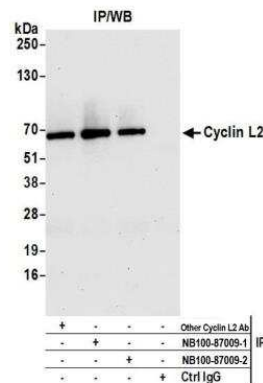


Images

Western Blot: Cyclin L2 Antibody [NB100-87009] - Whole cell lysate (50 ug) from HEK293T, K-562, HeLa, U2OS, and Jurkat cells prepared using NETN lysis buffer. Antibody: Affinity purified Rabbit anti-Cyclin L2 antibody used for WB at 0.04 ug/ml. Detection: Chemiluminescence with an exposure time of 30 seconds.



Immunoprecipitation: Cyclin L2 Antibody [NB100-87009] - Detection of human Cyclin L2 by western blot of immunoprecipitates. Samples: Whole cell lysate (1.0 mg per IP reaction; 20% of IP loaded) from Hela cells prepared using NETN lysis buffer. Antibodies: Affinity purified Rabbit anti-Cyclin L2 antibody NB100-87009 (lot 2) used for IP at 6 ug per reaction. Cyclin L2 was also immunoprecipitated by a previous lot of this antibody (lot 1) and rabbit anti-Cyclin L2 antibody from Company B. For blotting immunoprecipitated Cyclin L2, NB100-87009 was used at 0.04 ug/ml. Detection: Chemiluminescence with an exposure time of 10 seconds.



Publications

Parrish PCR, Thomas JD, Gabel AM Et al. Discovery of synthetic lethal and tumor suppressor paralog pairs in the human genome Cell reports 2021-08-31 [PMID: 34469736] (WB, Human)

Kisaka JK, Ratner L, Kyei GB The dual specificity kinase DYRK1A modulates the levels of cyclin L2 to control HIV replication in macrophages J. Virol. 2019-12-18 [PMID: 31852782] (IP, IB, KD, Human)

Kyei GB, Cheng X, Ramani R, Ratner L. Cyclin L2 Is a Critical HIV Dependency Factor in Macrophages that Controls SAMHD1 Abundance. Cell Host Microbe. 2014-12-17 [PMID: 25532805] (WB, Human)



Novus Biologicals USA

10730 E. Briarwood Avenue
Centennial, CO 80112
USA
Phone: 303.730.1950
Toll Free: 1.888.506.6887
Fax: 303.730.1966
nb-customerservice@bio-techne.com

Bio-Techne Canada

21 Canmotor Ave
Toronto, ON M8Z 4E6
Canada
Phone: 905.827.6400
Toll Free: 855.668.8722
Fax: 905.827.6402
canada.inquires@bio-techne.com

Bio-Techne Ltd

19 Barton Lane
Abingdon Science Park
Abingdon, OX14 3NB, United Kingdom
Phone: (44) (0) 1235 529449
Free Phone: 0800 37 34 15
Fax: (44) (0) 1235 533420
info.EMEA@bio-techne.com

General Contact Information

www.novusbio.com
Technical Support: nb-technical@bio-techne.com
Orders: nb-customerservice@bio-techne.com
General: novus@novusbio.com

Products Related to NB100-87009

HAF008	Goat anti-Rabbit IgG Secondary Antibody [HRP]
NB7160	Goat anti-Rabbit IgG (H+L) Secondary Antibody [HRP]
NBP2-24891	Rabbit IgG Isotype Control
NBP2-47497PEP	Cyclin L2 Recombinant Protein Antigen

Limitations

This product is for research use only and is not approved for use in humans or in clinical diagnosis. Primary Antibodies are guaranteed for 1 year from date of receipt.

For more information on our 100% guarantee, please visit www.novusbio.com/guarantee

Earn gift cards/discounts by submitting a review: www.novusbio.com/reviews/submit/NB100-87009

Earn gift cards/discounts by submitting a publication using this product:
www.novusbio.com/publications

