

Product Datasheet

ATF2 Antibody NB100-835

Unit Size: 0.1 mg

Store at -20C. Avoid freeze-thaw cycles.

www.novusbio.com



technical@novusbio.com

Reviews: 1 Publications: 2

Protocols, Publications, Related Products, Reviews, Research Tools and Images at:
www.novusbio.com/NB100-835

Updated 10/23/2024 v.20.1

**Earn rewards for product
reviews and publications.**

Submit a publication at www.novusbio.com/publications

Submit a review at www.novusbio.com/reviews/destination/NB100-835



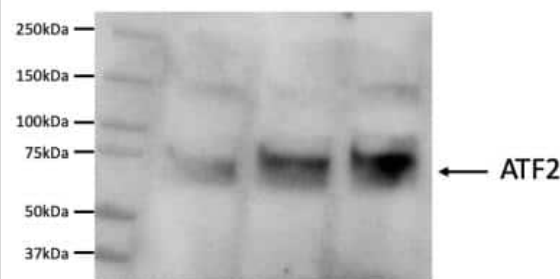
NB100-835**ATF2 Antibody**

Product Information	
Unit Size	0.1 mg
Concentration	0.5 mg/ml
Storage	Store at -20C. Avoid freeze-thaw cycles.
Clonality	Polyclonal
Preservative	0.02% Sodium Azide
Isotype	IgG
Purity	Immunogen affinity purified
Buffer	Tris saline (20 mM Tris pH 7.3, 150 mM NaCl), 0.5% BSA
Product Description	
Host	Goat
Gene ID	1386
Gene Symbol	ATF2
Species	Human
Immunogen	Peptide with sequence C-IVMAPSSQSQPSGS corresponding to C-Terminus according to NP_001871.2.
Product Application Details	
Applications	Western Blot, Peptide ELISA
Recommended Dilutions	Western Blot 0.3 - 1 ug/mL, Peptide ELISA Detection limit 1:32000
Application Notes	WB: Approx. 55 kDa band and 30 kDa band bands observed in lysates of human placenta. These bands correspond to earlier findings in scientific literature (PMID: 11932306). Approx. 75 kDa band observed in nuclear lysates of HeLa, HepG2 and K562 is reported in scientific literature (PMID: 19331149).



Images

Western Blot: ATF2 Antibody [NB100-835] - Human primary astrocyte lysates probed with ATF2 antibody. WB image submitted by a verified customer review.



Western Blot: ATF2 Antibody [NB100-835] - Staining of HepG2 (A), K562 (B) and HeLa (C) nuclear lysates (35 ug protein in RIPA buffer). Antibody at 1 ug/mL. Detected by chemiluminescence.



Publications

Monzen K, Hiroi Y, Kudoh S et al. Smads, TAK1, and their common target ATF-2 play a critical role in cardiomyocyte differentiation. J Cell Biol 2001-05-14 [PMID: 11352931]

Bailey J, Phillips RJ, Pollard AJ et al. Characterization and functional analysis of cAMP response element modulator protein and activating transcription factor 2 (ATF2) isoforms in the human myometrium during pregnancy and labor: identification of a novel ATF2 species with potent transactivation properties. J Clin Endocrinol Metab 2002-04-01 [PMID: 11932306]



Novus Biologicals USA

10730 E. Briarwood Avenue
Centennial, CO 80112
USA
Phone: 303.730.1950
Toll Free: 1.888.506.6887
Fax: 303.730.1966
nb-customerservice@bio-techne.com

Bio-Techne Canada

21 Canmotor Ave
Toronto, ON M8Z 4E6
Canada
Phone: 905.827.6400
Toll Free: 855.668.8722
Fax: 905.827.6402
canada.inquires@bio-techne.com

Bio-Techne Ltd

19 Barton Lane
Abingdon Science Park
Abingdon, OX14 3NB, United Kingdom
Phone: (44) (0) 1235 529449
Free Phone: 0800 37 34 15
Fax: (44) (0) 1235 533420
info.EMEA@bio-techne.com

General Contact Information

www.novusbio.com
Technical Support: nb-technical@bio-techne.com
Orders: nb-customerservice@bio-techne.com
General: novus@novusbio.com

Products Related to NB100-835

NB800-PC1	HeLa Whole Cell Lysate
HAF017	Rabbit anti-Goat IgG Secondary Antibody [HRP (Horseradish Peroxidase)]
HAF109	Donkey anti-Goat IgG Secondary Antibody [HRP (Horseradish Peroxidase)]
NB410-28088-1mg	Goat IgG Isotype Control

Limitations

This product is for research use only and is not approved for use in humans or in clinical diagnosis. Primary Antibodies are guaranteed for 1 year from date of receipt.

For more information on our 100% guarantee, please visit www.novusbio.com/guarantee

Earn gift cards/discounts by submitting a review: www.novusbio.com/reviews/submit/NB100-835

Earn gift cards/discounts by submitting a publication using this product:
www.novusbio.com/publications



