

# Product Datasheet

## LIM kinase 2 [p Thr505] Antibody NB100-82023

Unit Size: 0.05 ml

Store at 4C short term. Aliquot and store at -20C long term. Avoid freeze-thaw cycles.

[www.novusbio.com](http://www.novusbio.com)



[technical@novusbio.com](mailto:technical@novusbio.com)

Protocols, Publications, Related Products, Reviews, Research Tools and Images at:  
[www.novusbio.com/NB100-82023](http://www.novusbio.com/NB100-82023)

Updated 10/23/2024 v.20.1

Earn rewards for product  
reviews and publications.

Submit a publication at [www.novusbio.com/publications](http://www.novusbio.com/publications)

Submit a review at [www.novusbio.com/reviews/destination/NB100-82023](http://www.novusbio.com/reviews/destination/NB100-82023)



**NB100-82023**

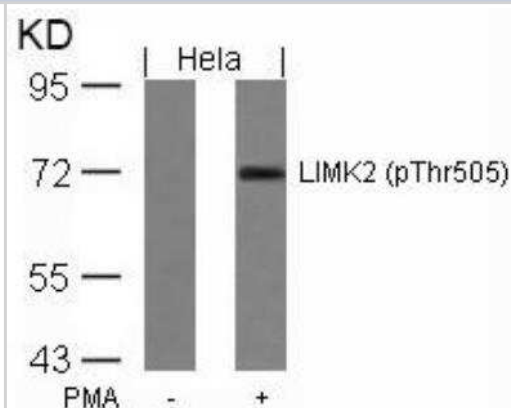
LIM kinase 2 [p Thr505] Antibody

Product Information	
Unit Size	0.05 ml
Concentration	1.0 mg/ml
Storage	Store at 4C short term. Aliquot and store at -20C long term. Avoid freeze-thaw cycles.
Clonality	Polyclonal
Preservative	0.02% Sodium Azide
Isotype	IgG
Purity	Immunogen affinity purified
Buffer	PBS, 50% glycerol, 0.5% BSA
Target Molecular Weight	72 kDa
Product Description	
Host	Rabbit
Gene ID	3985
Gene Symbol	LIMK2
Species	Human, Mouse, Rat
Specificity/Sensitivity	Detects endogenous levels of LIM kinase 2 only when phosphorylated at threonine 505.
Immunogen	The antiserum was produced against synthesized phosphopeptide derived from human LIM Kinase 2 around the phosphorylation site of threonine 505 (R-Y-TP-V-V).
Product Application Details	
Applications	Western Blot, Immunocytochemistry/ Immunofluorescence, Immunohistochemistry, Immunohistochemistry-Paraffin
Recommended Dilutions	Western Blot 1:500-1:1000, Immunohistochemistry 1:50-1:100, Immunocytochemistry/ Immunofluorescence 1:100-1:200, Immunohistochemistry-Paraffin 1:50-1:100

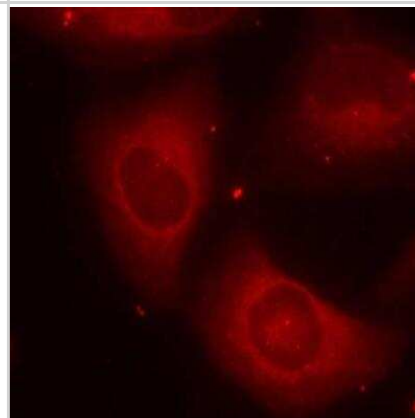


## Images

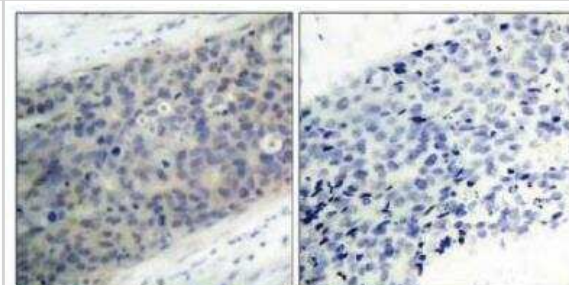
Western Blot: LIM kinase 2 [p Thr505] Antibody [NB100-82023] - Analysis of extracts from Hela cells untreated or treated with PMA using LIM kinase 2 [p Thr505] Antibody.



Immunocytochemistry/Immunofluorescence: LIM kinase 2 [p Thr505] Antibody [NB100-82023] - Staining of methanol-fixed Hela cells using LIM kinase 2 [p Thr505] Antibody.



Immunohistochemistry-Paraffin: LIM kinase 2 [p Thr505] Antibody [NB100-82023] - Analysis of paraffin- embedded human breast carcinoma tissue using NB100-82023 (left) or the same antibody preincubated with blocking peptide(right).





### **Novus Biologicals USA**

10730 E. Briarwood Avenue  
Centennial, CO 80112  
USA  
Phone: 303.730.1950  
Toll Free: 1.888.506.6887  
Fax: 303.730.1966  
nb-customerservice@bio-techne.com

### **Bio-Techne Canada**

21 Canmotor Ave  
Toronto, ON M8Z 4E6  
Canada  
Phone: 905.827.6400  
Toll Free: 855.668.8722  
Fax: 905.827.6402  
canada.inquires@bio-techne.com

### **Bio-Techne Ltd**

19 Barton Lane  
Abingdon Science Park  
Abingdon, OX14 3NB, United Kingdom  
Phone: (44) (0) 1235 529449  
Free Phone: 0800 37 34 15  
Fax: (44) (0) 1235 533420  
info.EMEA@bio-techne.com

### **General Contact Information**

www.novusbio.com  
Technical Support: nb-technical@bio-techne.com  
Orders: nb-customerservice@bio-techne.com  
General: novus@novusbio.com

### **Products Related to NB100-82023**

HAF008	Goat anti-Rabbit IgG Secondary Antibody [HRP]
NB7160	Goat anti-Rabbit IgG (H+L) Secondary Antibody [HRP]
NBP2-24891	Rabbit IgG Isotype Control
H00003985-Q01-10ug	Recombinant Human LIM kinase 2 GST (N-Term) Protein

### **Limitations**

This product is for research use only and is not approved for use in humans or in clinical diagnosis. Primary Antibodies are guaranteed for 1 year from date of receipt.

For more information on our 100% guarantee, please visit [www.novusbio.com/guarantee](http://www.novusbio.com/guarantee)

Earn gift cards/discounts by submitting a review: [www.novusbio.com/reviews/submit/NB100-82023](http://www.novusbio.com/reviews/submit/NB100-82023)

Earn gift cards/discounts by submitting a publication using this product:  
[www.novusbio.com/publications](http://www.novusbio.com/publications)

