

Product Datasheet

IGF-I R/IGF1R [p Tyr1165, p Tyr1166] Antibody - BSA Free NB100-81983

Unit Size: 0.05 ml

Store at 4C short term. Aliquot and store at -20C long term. Avoid freeze-thaw cycles.

www.novusbio.com



technical@novusbio.com

Publications: 2

Protocols, Publications, Related Products, Reviews, Research Tools and Images at:
www.novusbio.com/NB100-81983

Updated 2/21/2025 v.20.1

Earn rewards for product
reviews and publications.

Submit a publication at www.novusbio.com/publications

Submit a review at www.novusbio.com/reviews/destination/NB100-81983



NB100-81983

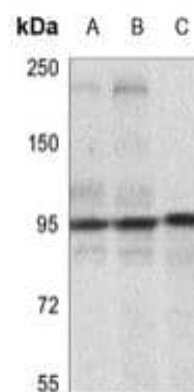
IGF-I R/IGF1R [p Tyr1165, p Tyr1166] Antibody - BSA Free

Product Information	
Unit Size	0.05 ml
Concentration	1.0 mg/ml
Storage	Store at 4C short term. Aliquot and store at -20C long term. Avoid freeze-thaw cycles.
Clonality	Polyclonal
Preservative	0.02% Sodium Azide
Isotype	IgG
Purity	Immunogen affinity purified
Buffer	PBS, 50% glycerol, 0.5% BSA
Product Description	
Host	Rabbit
Gene ID	3480
Gene Symbol	IGF1R
Species	Human, Mouse, Rat
Specificity/Sensitivity	Detects endogenous levels of IGF-I R/IGF1R only when phosphorylated at tyrosine 1165/tyrosine1166.
Immunogen	The antiserum was produced against synthesized phosphopeptide derived from human IGF-I R/IGF1R around the phosphorylation site of tyrosine 1165/tyrosine 1166 (T-D-YP-YP-R-K).
Product Application Details	
Applications	Western Blot, Immunohistochemistry
Recommended Dilutions	Western Blot 1:500-1:1000, Immunohistochemistry 1:50-1:100

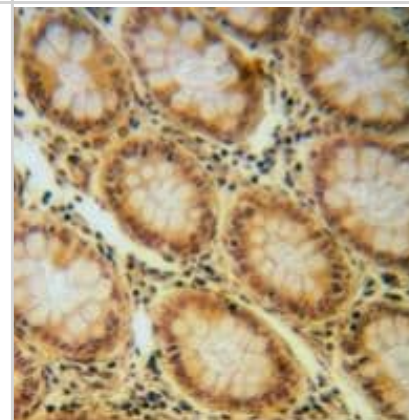


Images

Western Blot: IGF-I R/IGF1R [p Tyr1165, p Tyr1166] Antibody [NB100-81983] - Western blot in MCF7 (A), MCF7-insulin-15min (B), A2780 (C) whole cell lysates. (Predicted band size: 154 kD; Observed band size: 95; 200 kD)



Immunohistochemistry-Paraffin: IGF-I R/IGF1R [p Tyr1165, p Tyr1166] Antibody [NB100-81983] - Immunohistochemical staining in human colorectal cancer formalin fixed paraffin embedded tissue section.



Publications

Schwiebert C, Kuhnen P, Becker NP et al. Antagonistic Autoantibodies to Insulin-Like Growth Factor-1 Receptor Associate with Poor Physical Strength Int J Mol Sci 2020-01-11 [PMID: 31940750] (WB, Human)

Welsink T Schomburg L . Development and Diagnostic Application of a Novel Quantitative Testfor Determination and Characterization of Autoantibodies againstInsulin-like Growth Factor 1 Receptor. Thesis. 2015-01-01 (WB, Human)



Novus Biologicals USA

10730 E. Briarwood Avenue
Centennial, CO 80112
USA
Phone: 303.730.1950
Toll Free: 1.888.506.6887
Fax: 303.730.1966
nb-customerservice@bio-techne.com

Bio-Techne Canada

21 Canmotor Ave
Toronto, ON M8Z 4E6
Canada
Phone: 905.827.6400
Toll Free: 855.668.8722
Fax: 905.827.6402
canada.inquires@bio-techne.com

Bio-Techne Ltd

19 Barton Lane
Abingdon Science Park
Abingdon, OX14 3NB, United Kingdom
Phone: (44) (0) 1235 529449
Free Phone: 0800 37 34 15
Fax: (44) (0) 1235 533420
info.EMEA@bio-techne.com

General Contact Information

www.novusbio.com
Technical Support: nb-technical@bio-techne.com
Orders: nb-customerservice@bio-techne.com
General: novus@novusbio.com

Products Related to NB100-81983

NBL1-11867	IGF-I R/IGF1R Overexpression Lysate
HAF008	Goat anti-Rabbit IgG Secondary Antibody [HRP]
NB7160	Goat anti-Rabbit IgG (H+L) Secondary Antibody [HRP]
NBP2-24891	Rabbit IgG Isotype Control

Limitations

This product is for research use only and is not approved for use in humans or in clinical diagnosis. Primary Antibodies are guaranteed for 1 year from date of receipt.

For more information on our 100% guarantee, please visit www.novusbio.com/guarantee

Earn gift cards/discounts by submitting a review: www.novusbio.com/reviews/submit/NB100-81983

Earn gift cards/discounts by submitting a publication using this product:
www.novusbio.com/publications

