

Product Datasheet

ER alpha/NR3A1 [p Ser106] Antibody NB100-81912

Unit Size: 0.05 ml

Store at 4C short term. Aliquot and store at -20C long term. Avoid freeze-thaw cycles.

www.novusbio.com



technical@novusbio.com

Protocols, Publications, Related Products, Reviews, Research Tools and Images at:
www.novusbio.com/NB100-81912

Updated 10/23/2024 v.20.1

Earn rewards for product
reviews and publications.

Submit a publication at www.novusbio.com/publications

Submit a review at www.novusbio.com/reviews/destination/NB100-81912



NB100-81912

ER alpha/NR3A1 [p Ser106] Antibody

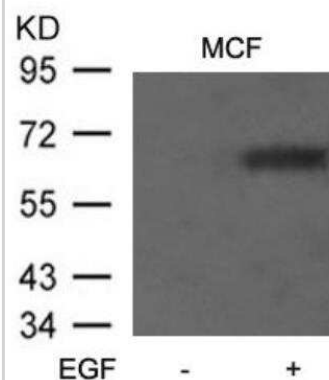
Product Information	
Unit Size	0.05 ml
Concentration	1.0 mg/ml
Storage	Store at 4C short term. Aliquot and store at -20C long term. Avoid freeze-thaw cycles.
Clonality	Polyclonal
Preservative	0.02% Sodium Azide
Isotype	IgG
Purity	Immunogen affinity purified
Buffer	PBS, 50% glycerol, 0.5% BSA
Target Molecular Weight	66 kDa

Product Description	
Host	Rabbit
Gene ID	2099
Gene Symbol	ESR1
Species	Human, Mouse, Rat
Specificity/Sensitivity	Detects endogenous levels of ER alpha/NR3A1 only when phosphorylated at serine 106.
Immunogen	The antiserum was produced against synthesized phosphopeptide derived from human ER alpha/NR3A1 around the phosphorylation site of serine 106 (S-P- SP-P-L).

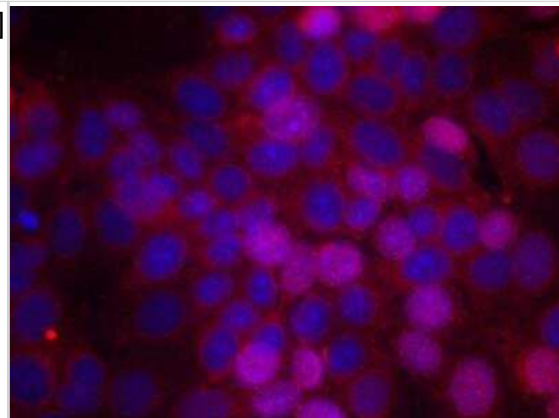
Product Application Details	
Applications	Western Blot, Immunocytochemistry/ Immunofluorescence, Immunohistochemistry, Immunohistochemistry-Paraffin
Recommended Dilutions	Western Blot 1:500-1:2000, Immunohistochemistry 1:100-1:300, Immunocytochemistry/ Immunofluorescence 1:200-1:1000, Immunohistochemistry-Paraffin 1:50-1:100

Images

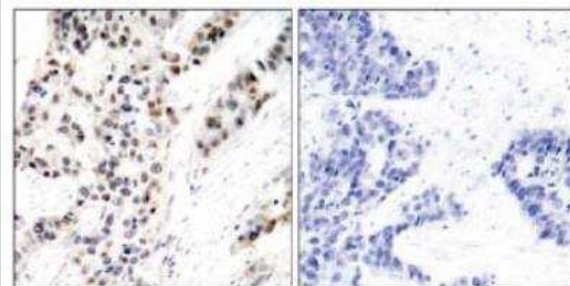
Western Blot: ER alpha/NR3A1 [p Ser106] Antibody [NB100-81912] - Western blot analysis of extracts from MCF7 cells untreated or treated with EGF



Immunocytochemistry/Immunofluorescence: ER alpha/NR3A1 [p Ser106] Antibody [NB100-81912] - Staining of methanol-fixed MCF cells using Estrogen Receptor-alpha (Phospho-Ser106) antibody.

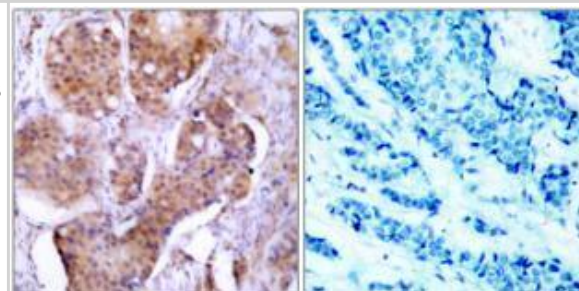


Immunohistochemistry-Paraffin: ER alpha/NR3A1 [p Ser106] Antibody [NB100-81912] - Analysis of paraffin- embedded human breast carcinoma tissue using Estrogen Receptor-alpha (phospho-Ser106) antibody NB100-81912.

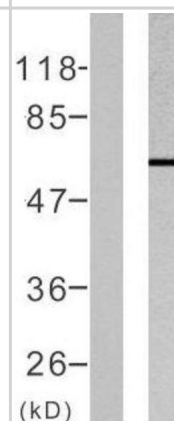


P-Peptide - +

Immunohistochemistry-Paraffin: ER alpha/NR3A1 [p Ser106] Antibody [NB100-81912] - Immunohistochemical analysis of paraffin-embedded human breast carcinoma, using NB100-81912. The picture on the right is blocked with the phospho peptide.



Western Blot: ER alpha/NR3A1 [p Ser106] Antibody [NB100-81912] - Western blot analysis of lysates from MCF7 cells, using NB100-81912. The lane on the left is blocked with the phospho peptide





Novus Biologicals USA

10730 E. Briarwood Avenue
Centennial, CO 80112
USA
Phone: 303.730.1950
Toll Free: 1.888.506.6887
Fax: 303.730.1966
nb-customerservice@bio-techne.com

Bio-Techne Canada

21 Canmotor Ave
Toronto, ON M8Z 4E6
Canada
Phone: 905.827.6400
Toll Free: 855.668.8722
Fax: 905.827.6402
canada.inquires@bio-techne.com

Bio-Techne Ltd

19 Barton Lane
Abingdon Science Park
Abingdon, OX14 3NB, United Kingdom
Phone: (44) (0) 1235 529449
Free Phone: 0800 37 34 15
Fax: (44) (0) 1235 533420
info.EMEA@bio-techne.com

General Contact Information

www.novusbio.com
Technical Support: nb-technical@bio-techne.com
Orders: nb-customerservice@bio-techne.com
General: novus@novusbio.com

Products Related to NB100-81912

NBL1-10344	ER alpha/NR3A1 Overexpression Lysate
HAF008	Goat anti-Rabbit IgG Secondary Antibody [HRP]
NB7160	Goat anti-Rabbit IgG (H+L) Secondary Antibody [HRP]
NBP2-24891	Rabbit IgG Isotype Control

Limitations

This product is for research use only and is not approved for use in humans or in clinical diagnosis. Primary Antibodies are guaranteed for 1 year from date of receipt.

For more information on our 100% guarantee, please visit www.novusbio.com/guarantee

Earn gift cards/discounts by submitting a review: www.novusbio.com/reviews/submit/NB100-81912

Earn gift cards/discounts by submitting a publication using this product:
www.novusbio.com/publications

