

# Product Datasheet

## ER alpha/NR3A1 Antibody NB100-81909

Unit Size: 0.1 ml

Store at 4C short term. Aliquot and store at -20C long term. Avoid freeze-thaw cycles.

[www.novusbio.com](http://www.novusbio.com)



[technical@novusbio.com](mailto:technical@novusbio.com)

**Reviews: 2 Publications: 1**

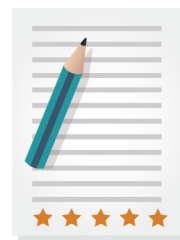
Protocols, Publications, Related Products, Reviews, Research Tools and Images at:  
[www.novusbio.com/NB100-81909](http://www.novusbio.com/NB100-81909)

Updated 2/20/2025 v.20.1

**Earn rewards for product  
reviews and publications.**

Submit a publication at [www.novusbio.com/publications](http://www.novusbio.com/publications)

Submit a review at [www.novusbio.com/reviews/destination/NB100-81909](http://www.novusbio.com/reviews/destination/NB100-81909)



**NB100-81909**

ER alpha/NR3A1 Antibody

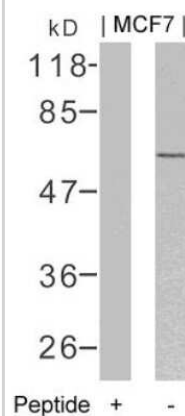
Product Information	
Unit Size	0.1 ml
Concentration	1.0 mg/ml
Storage	Store at 4C short term. Aliquot and store at -20C long term. Avoid freeze-thaw cycles.
Clonality	Polyclonal
Preservative	0.02% Sodium Azide
Isotype	IgG
Purity	Immunogen affinity purified
Buffer	PBS, 50% glycerol, 0.5% BSA
Target Molecular Weight	66 kDa

Product Description	
Host	Rabbit
Gene ID	2099
Gene Symbol	ESR1
Species	Human, Mouse, Rat
Specificity/Sensitivity	Detects endogenous levels of total ER alpha/NR3A1 protein.
Immunogen	The antiserum was produced against synthesized peptide derived from human ER alpha/NR3A1.

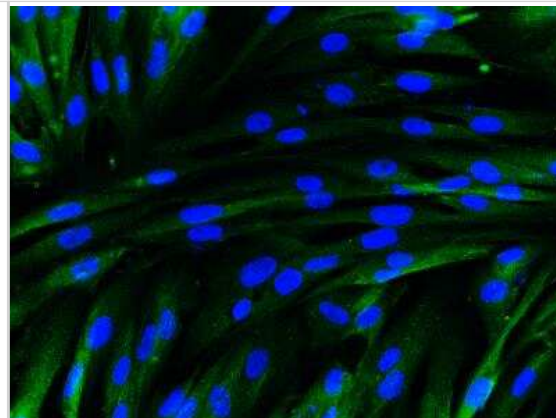
Product Application Details	
Applications	Western Blot, Simple Western, Immunocytochemistry/ Immunofluorescence, Immunohistochemistry, Immunohistochemistry-Paraffin
Recommended Dilutions	Western Blot 1:500-1:2000, Simple Western, Immunohistochemistry 1:100-1:300, Immunocytochemistry/ Immunofluorescence 1:200-1:1000, Immunohistochemistry-Paraffin 1:50 - 1:100
Application Notes	This ER alpha/NR3A1 Antibody is validated for ICC/IF from a verified customer review.

**Images**

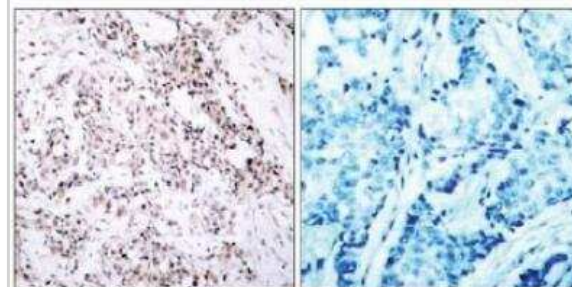
Western Blot: ER alpha/NR3A1 Antibody [NB100-81909] - Western blot analysis of extracts from MCF7 cells using NB100-81909 and the same antibody preincubated with blocking peptide.



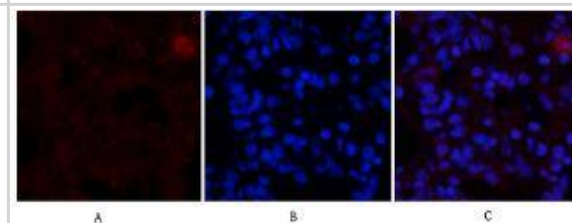
Immunocytochemistry/Immunofluorescence: ER alpha/NR3A1 Antibody [NB100-81909] - ICC/IF showing estrogen receptor alpha (green) in human cervical stromal cells. Nuclei are stained with DAPI (blue). Antibody at 1:200 in 3% BSA. ICC/IF image submitted by a verified customer review.



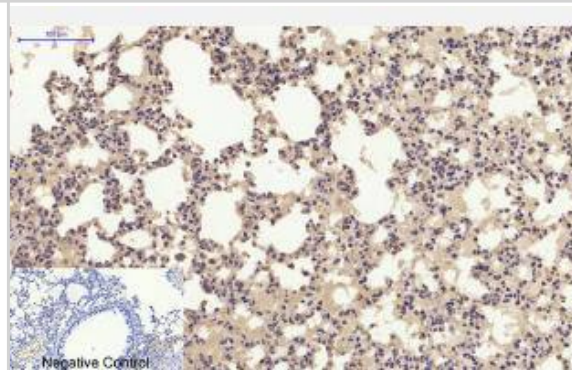
Immunohistochemistry-Paraffin: ER alpha/NR3A1 Antibody [NB100-81909] - Analysis of paraffin-embedded human breast carcinoma tissue using NB100-81909 (left) or the same antibody preincubated with blocking peptide(right).



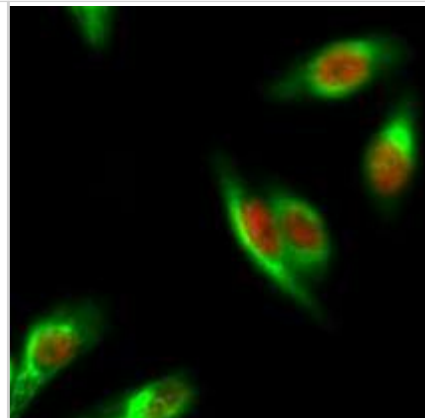
Immunohistochemistry-Paraffin: ER alpha/NR3A1 Antibody [NB100-81909] - Immunofluorescence analysis of rat-lung tissue.



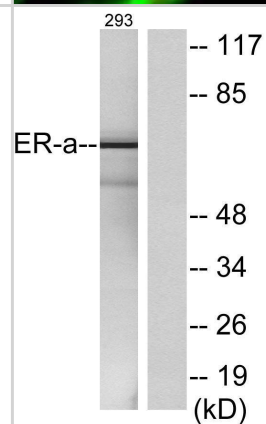
Immunohistochemistry-Paraffin: ER alpha/NR3A1 Antibody [NB100-81909] - Immunohistochemical analysis of paraffin-embedded Mouse-lung tissue.



Immunocytochemistry/ Immunofluorescence: ER alpha/NR3A1 Antibody [NB100-81909] - Immunofluorescence analysis of Hela cells.



Western Blot: ER alpha/NR3A1 Antibody [NB100-81909] - Western blot analysis of lysates from 293 cells, using NB100-81909. The lane on the right is blocked with the synthesized peptide.



Immunohistochemistry-Paraffin: ER alpha/NR3A1 Antibody [NB100-81909] - Immunohistochemical analysis of paraffin-embedded Human-lung tissue.



## Publications

Tantengco O, Richardson L, Mennon R Effects of a gestational level of estradiol on cellular transition, migration, and inflammation in cervical epithelial and stromal cells Am J Reprod Immunol 2020-11-05 [PMID: 33152143]



### **Novus Biologicals USA**

10730 E. Briarwood Avenue  
Centennial, CO 80112  
USA  
Phone: 303.730.1950  
Toll Free: 1.888.506.6887  
Fax: 303.730.1966  
nb-customerservice@bio-techne.com

### **Bio-Techne Canada**

21 Canmotor Ave  
Toronto, ON M8Z 4E6  
Canada  
Phone: 905.827.6400  
Toll Free: 855.668.8722  
Fax: 905.827.6402  
canada.inquires@bio-techne.com

### **Bio-Techne Ltd**

19 Barton Lane  
Abingdon Science Park  
Abingdon, OX14 3NB, United Kingdom  
Phone: (44) (0) 1235 529449  
Free Phone: 0800 37 34 15  
Fax: (44) (0) 1235 533420  
info.EMEA@bio-techne.com

### **General Contact Information**

www.novusbio.com  
Technical Support: nb-technical@bio-techne.com  
Orders: nb-customerservice@bio-techne.com  
General: novus@novusbio.com

### **Products Related to NB100-81909**

---

HAF008	Goat anti-Rabbit IgG Secondary Antibody [HRP]
NB7160	Goat anti-Rabbit IgG (H+L) Secondary Antibody [HRP]
NBP2-24891	Rabbit IgG Isotype Control
H00002099-Q01-10ug	Recombinant Human ER alpha/NR3A1 GST (N-Term) Protein

---

### **Limitations**

This product is for research use only and is not approved for use in humans or in clinical diagnosis. Primary Antibodies are guaranteed for 1 year from date of receipt.

For more information on our 100% guarantee, please visit [www.novusbio.com/guarantee](http://www.novusbio.com/guarantee)

Earn gift cards/discounts by submitting a review: [www.novusbio.com/reviews/submit/NB100-81909](http://www.novusbio.com/reviews/submit/NB100-81909)

Earn gift cards/discounts by submitting a publication using this product:  
[www.novusbio.com/publications](http://www.novusbio.com/publications)

