

Product Datasheet

DNA Polymerase lambda Antibody - BSA Free NB100-81665

Unit Size: 100 ul

Store at 4C. Do not freeze.

www.novusbio.com



technical@novusbio.com

Publications: 1

Protocols, Publications, Related Products, Reviews, Research Tools and Images at:
www.novusbio.com/NB100-81665

Updated 9/9/2025 v.20.1

Earn rewards for product
reviews and publications.

Submit a publication at www.novusbio.com/publications

Submit a review at www.novusbio.com/reviews/destination/NB100-81665



NB100-81665**DNA Polymerase lambda Antibody - BSA Free**

Product Information	
Unit Size	100 ul
Concentration	1.0 mg/ml
Storage	Store at 4C. Do not freeze.
Clonality	Polyclonal
Preservative	0.09% Sodium Azide
Isotype	IgG
Purity	Immunogen affinity purified
Buffer	Tris-Citrate/Phosphate (pH 7.0 - 8.0)

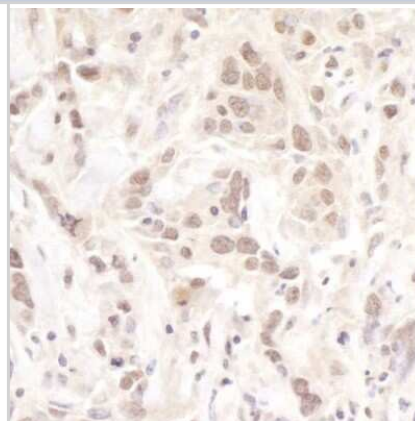
Product Description	
Description	Novus Biologicals Rabbit DNA Polymerase lambda Antibody - BSA Free (NB100-81665) is a polyclonal antibody validated for use in IHC, WB and IP. Anti-DNA Polymerase lambda Antibody: Cited in 1 publication. All Novus Biologicals antibodies are covered by our 100% guarantee.
Host	Rabbit
Gene ID	27343
Gene Symbol	POLL
Species	Human, Mouse
Immunogen	The immunogen recognized by this antibody maps to a region between residue 525 and 575 of human polymerase (DNA directed), lambda using the numbering given in entry NP_037406.1 (GeneID 27343).

Product Application Details	
Applications	Immunohistochemistry-Paraffin, Immunohistochemistry, Immunoprecipitation, Western Blot (Negative)
Recommended Dilutions	Immunohistochemistry 1:500-1:2000, Immunoprecipitation 2-10 ug/mg lysate, Immunohistochemistry-Paraffin 1:500-1:2000, Western Blot (Negative)
Application Notes	Epitope retrieval with citrate buffer pH6.0 is recommended for FFPE tissue sections. Western Blot Not recommended.

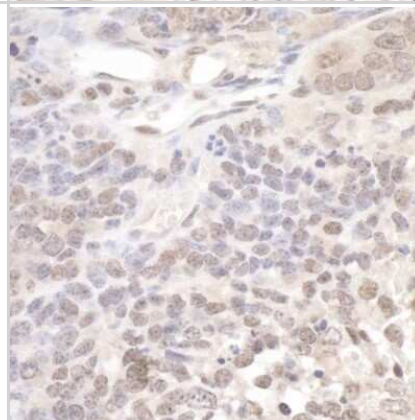


Images

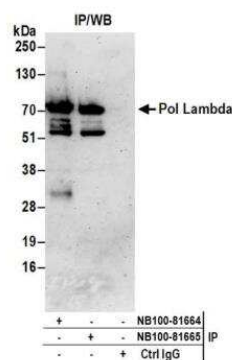
Immunohistochemistry-Paraffin: DNA Polymerase lambda Antibody [NB100-81665] - Detection of human Pol Lambda by immunohistochemistry. Sample: FFPE section of human breast carcinoma. Antibody: Affinity purified rabbit anti- Pol Lambda (NB100-81665). Detection: DAB



Immunohistochemistry-Paraffin: DNA Polymerase lambda Antibody [NB100-81665] - Detection of mouse Pol Lambda by immunohistochemistry. Sample: FFPE section of mouse teratoma. Antibody: Affinity purified rabbit anti- Pol Lambda (NB100-81665). Detection: DAB



Immunoprecipitation: DNA Polymerase lambda Antibody [NB100-81665] - Detection of human Pol Lambda by western blot of immunoprecipitates. Samples: Whole cell lysate (0.5 or 1.0 mg per IP reaction; 20% of IP loaded) from HeLa cells prepared using NETN lysis buffer. Antibodies: Affinity purified rabbit anti-Pol Lambda antibody NB100-81665 used for IP at 6 ug per reaction. Pol Lambda was also immunoprecipitated by rabbit anti-Pol Lambda antibody NB100-81664. For blotting immunoprecipitated Pol Lambda, NB100-81665 was used at 1 ug/ml. Detection: Chemiluminescence with an exposure time of 3 minutes.



Publications

Chandramouly G, Jamsen J, Borisonnik N et al. Pol lambda promotes microhomology-mediated end-joining Nature structural & molecular biology 2022-12-19 [PMID: 36536104] (WB, Human)

Details:

Dilution used in WB 1:1000



Novus Biologicals USA

10730 E. Briarwood Avenue
Centennial, CO 80112
USA
Phone: 303.730.1950
Toll Free: 1.888.506.6887
Fax: 303.730.1966
nb-customerservice@bio-techne.com

Bio-Techne Canada

21 Canmotor Ave
Toronto, ON M8Z 4E6
Canada
Phone: 905.827.6400
Toll Free: 855.668.8722
Fax: 905.827.6402
canada.inquires@bio-techne.com

Bio-Techne Ltd

19 Barton Lane
Abingdon Science Park
Abingdon, OX14 3NB, United Kingdom
Phone: (44) (0) 1235 529449
Free Phone: 0800 37 34 15
Fax: (44) (0) 1235 533420
info.EMEA@bio-techne.com

General Contact Information

www.novusbio.com
Technical Support: nb-technical@bio-techne.com
Orders: nb-customerservice@bio-techne.com
General: novus@novusbio.com

Products Related to NB100-81665

NBL1-14573	DNA Polymerase lambda Overexpression Lysate
NBP2-33376H	Blue Marker Antibody (6F4-F6) [HRP]
HAF008	Goat anti-Rabbit IgG Secondary Antibody [HRP]
NB7160	Goat anti-Rabbit IgG (H+L) Secondary Antibody [HRP]
NBP2-24891	Rabbit IgG Isotype Control

Limitations

This product is for research use only and is not approved for use in humans or in clinical diagnosis. Primary Antibodies are guaranteed for 1 year from date of receipt.

For more information on our 100% guarantee, please visit www.novusbio.com/guarantee

Earn gift cards/discounts by submitting a review: www.novusbio.com/reviews/submit/NB100-81665

Earn gift cards/discounts by submitting a publication using this product:
www.novusbio.com/publications

