

Product Datasheet

CPSF2 Antibody NB100-79823

Unit Size: 0.1 ml

Store at 4C. Do not freeze.

www.novusbio.com



technical@novusbio.com

Publications: 3

Protocols, Publications, Related Products, Reviews, Research Tools and Images at:
www.novusbio.com/NB100-79823

Updated 9/9/2025 v.20.1

Earn rewards for product
reviews and publications.

Submit a publication at www.novusbio.com/publications

Submit a review at www.novusbio.com/reviews/destination/NB100-79823



NB100-79823

CPSF2 Antibody

| Product Information | |
|-------------------------|-----------------------------|
| Unit Size | 0.1 ml |
| Concentration | 0.2 mg/ml |
| Storage | Store at 4C. Do not freeze. |
| Clonality | Polyclonal |
| Preservative | 0.09% Sodium Azide |
| Isotype | IgG |
| Purity | Immunogen affinity purified |
| Buffer | TBS and 0.1% BSA |
| Target Molecular Weight | 88 kDa |

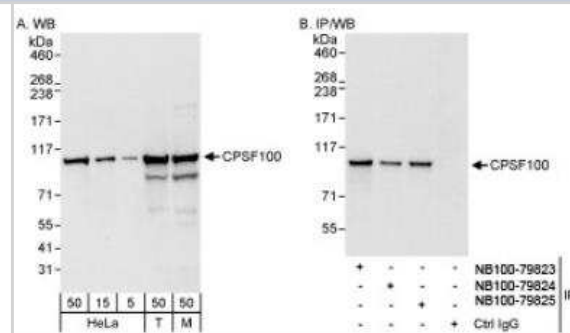
| Product Description | |
|---------------------|---|
| Description | Novus Biologicals Rabbit CPSF2 Antibody (NB100-79823) is a polyclonal antibody validated for use in IHC, WB, IP and ChIP. Anti-CPSF2 Antibody: Cited in 3 publications. All Novus Biologicals antibodies are covered by our 100% guarantee. |
| Host | Rabbit |
| Gene ID | 53981 |
| Gene Symbol | CPSF2 |
| Species | Human, Mouse |
| Immunogen | The immunogen recognized by this antibody maps to a region between residue 450 and 500 of human cleavage and polyadenylation specific factor 2, 100kDa using the numbering given in entry NP_059133.1 (GeneID 53981). |

| Product Application Details | |
|-----------------------------|---|
| Applications | Western Blot, Immunohistochemistry-Paraffin, Immunohistochemistry, Immunoprecipitation, Chromatin Immunoprecipitation (ChIP) |
| Recommended Dilutions | Western Blot 1:2000-1:10000, Immunohistochemistry 1:100-1:500, Immunoprecipitation 2-5 ug/mg lysate, Immunohistochemistry-Paraffin 1:100-1:500, Chromatin Immunoprecipitation (ChIP) 1:10-1:500 |
| Application Notes | Epitope retrieval with citrate buffer pH6.0 is recommended for FFPE tissue sections. Chip, WB reactivity reported in (PMID: 25274738). |

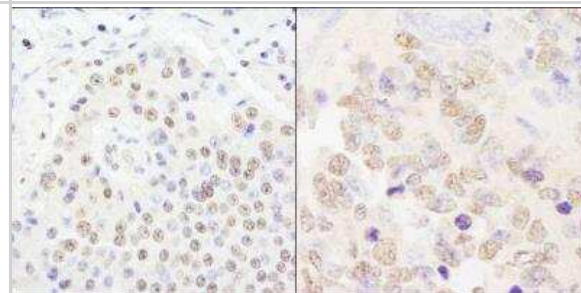


Images

Western Blot: CPSF2 Antibody [NB100-79823] - Detection of CPSF2 from HeLa whole cell lysate (5, 15, 50 microgram), 293T (T; 50 microgram) and mouse NIH3T3 (M; 50 microgram). CPSF100 was also immunoprecipitated by rabbit anti-CPSF100 antibodies NB100-79824 and NB100-79825.



Immunohistochemistry-Paraffin: CPSF2 Antibody [NB100-79823] - Human pancreatic islet cell tumor (left) and mouse teratoma (right). Antibody used at a dilution of 1:200 (1ug/ml).



Publications

Pieraccioli M, Caggiano C, Mignini L et al. The transcriptional terminator XRN2 and the RNA-binding protein Sam68 link alternative polyadenylation to cell cycle progression in prostate cancer *Nature structural & molecular biology* 2022 -11-01 [PMID: 36344846] (WB, Human)

Tran DD, Saran S, Williamson AJ et al. THOC5 controls 3'end-processing of immediate early genes via interaction with polyadenylation specific factor 100 (CPSF100). *Nucleic Acids Res.* 2014-10-01 [PMID: 25274738] (WB, Chemotaxis, Mouse)

Details:

CPSF2 antibody used for ChIP on ERT2Cre THOC5 (flox/flox) MEF cells. Antibody also used for WB on Mouse NIH3T3 cells were transfected with CPSF100-specific siRNA and control siRNA and cell lysates .

Sagawa F, Ibrahim H, Morrison AL et al. Nucleophosmin deposition during mRNA 3' end processing influences poly (A) tail length. *EMBO J* 2011-08-01 [PMID: 21822216]



Novus Biologicals USA

10730 E. Briarwood Avenue
Centennial, CO 80112
USA
Phone: 303.730.1950
Toll Free: 1.888.506.6887
Fax: 303.730.1966
nb-customerservice@bio-techne.com

Bio-Techne Canada

21 Canmotor Ave
Toronto, ON M8Z 4E6
Canada
Phone: 905.827.6400
Toll Free: 855.668.8722
Fax: 905.827.6402
canada.inquires@bio-techne.com

Bio-Techne Ltd

19 Barton Lane
Abingdon Science Park
Abingdon, OX14 3NB, United Kingdom
Phone: (44) (0) 1235 529449
Free Phone: 0800 37 34 15
Fax: (44) (0) 1235 533420
info.EMEA@bio-techne.com

General Contact Information

www.novusbio.com
Technical Support: nb-technical@bio-techne.com
Orders: nb-customerservice@bio-techne.com
General: novus@novusbio.com

Products Related to NB100-79823

| | |
|------------|---|
| NBL1-09446 | CPSF2 Overexpression Lysate |
| HAF008 | Goat anti-Rabbit IgG Secondary Antibody [HRP] |
| NB7160 | Goat anti-Rabbit IgG (H+L) Secondary Antibody [HRP] |
| NBP2-24891 | Rabbit IgG Isotype Control |

Limitations

This product is for research use only and is not approved for use in humans or in clinical diagnosis. Primary Antibodies are guaranteed for 1 year from date of receipt.

For more information on our 100% guarantee, please visit www.novusbio.com/guarantee

Earn gift cards/discounts by submitting a review: www.novusbio.com/reviews/submit/NB100-79823

Earn gift cards/discounts by submitting a publication using this product:
www.novusbio.com/publications

