

Product Datasheet

Importin alpha 2/KPNA2 Antibody - BSA Free NB100-79808

Unit Size: 100 ul

Store at 4C. Do not freeze.

www.novusbio.com



technical@novusbio.com

Publications: 1

Protocols, Publications, Related Products, Reviews, Research Tools and Images at:
www.novusbio.com/NB100-79808

Updated 2/21/2025 v.20.1

Earn rewards for product
reviews and publications.

Submit a publication at www.novusbio.com/publications

Submit a review at www.novusbio.com/reviews/destination/NB100-79808



NB100-79808

Importin alpha 2/KPNA2 Antibody - BSA Free

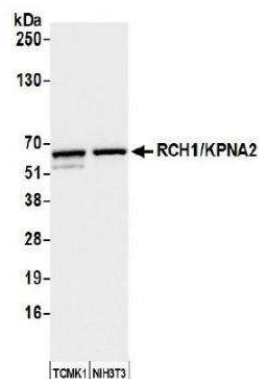
Product Information	
Unit Size	100 ul
Concentration	1.0 mg/ml
Storage	Store at 4C. Do not freeze.
Clonality	Polyclonal
Preservative	0.09% Sodium Azide
Isotype	IgG
Purity	Immunogen affinity purified
Buffer	Tris-Citrate/Phosphate (pH 7.0 - 8.0)

Product Description	
Host	Rabbit
Gene ID	3838
Gene Symbol	KPNA2
Species	Human, Mouse
Immunogen	The immunogen recognized by this antibody maps to a region between residue 475 and the C-terminus (residue 529) of human RAG cohort 1 (Karyopherin Alpha 2) using the numbering given in entry NP_002257.1 (GeneID 3838).

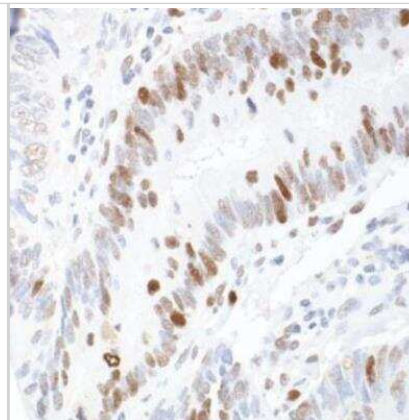
Product Application Details	
Applications	Western Blot, Immunohistochemistry, Immunohistochemistry-Paraffin, Immunoprecipitation
Recommended Dilutions	Western Blot 1:10000 - 1:25000, Immunohistochemistry 1:1000 -1:5000, Immunoprecipitation 2 - 10 ug/mg lysate, Immunohistochemistry-Paraffin 1:1000 -1:5000
Application Notes	Epitope retrieval with citrate buffer pH6.0 is recommended for FFPE tissue sections.

Images

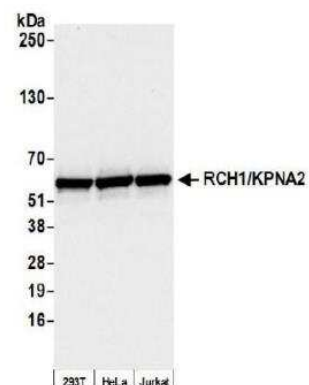
Western Blot: Importin alpha 2/KPNA2 Antibody [NB100-79808] - Whole cell lysate (10 ug) from TCMK-1 and NIH 3T3 cells prepared using NETN lysis buffer. Antibody: Affinity purified rabbit anti-RCH1/KPNA2 antibody used for WB at 0.04 ug/ml. Detection: Chemiluminescence with an exposure time of 3 seconds.



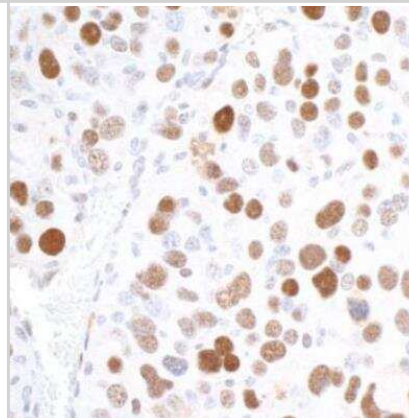
Immunohistochemistry-Paraffin: Importin alpha 2/KPNA2 Antibody [NB100-79808] - FFPE section of human colon carcinoma. Antibody: Affinity purified rabbit anti- RCH1/KPNA2 used at 1:5,000 (0.2ug/ml). Detection: DAB



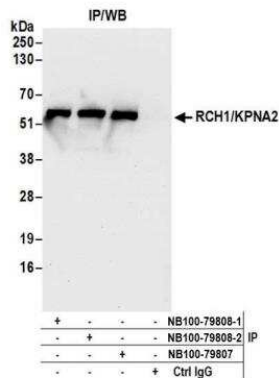
Western Blot: Importin alpha 2/KPNA2 Antibody [NB100-79808] - Whole cell lysate (10 ug) from HEK293T, HeLa, and Jurkat cells prepared using NETN lysis buffer. Antibody: Affinity purified rabbit anti-RCH1/KPNA2 antibody used for WB at 0.04 ug/ml. Detection: Chemiluminescence with an exposure time of 3 seconds.



Immunohistochemistry-Paraffin: Importin alpha 2/KPNA2 Antibody [NB100-79808] - FFPE section of mouse renal cell carcinoma. Antibody: Affinity purified rabbit anti-RCH1/KPNA2 used at 1:5,000 (0.2ug/ml). Detection: DAB



Immunoprecipitation: Importin alpha 2/KPNA2 Antibody [NB100-79808] - Detection of human RCH1/KPNA2 by western blot of immunoprecipitates. Samples: Whole cell lysate (0.5 or 1.0 mg per IP reaction; 20% of IP loaded) from HeLa cells. Antibodies: Affinity purified rabbit anti-RCH1/KPNA2 antibody NB100-79808 (lot NB100-79808-2) used for IP at 6 ug per reaction. RCH1/KPNA2 was also immunoprecipitated by a previous lot of this antibody (lot NB100-79808-1) and rabbit anti-RCH1/KPNA2 antibody NB100-79807. For blotting immunoprecipitated RCH1/KPNA2, NB100-79808 was used at 0.04 ug/ml. Detection: Chemiluminescence with an exposure time of 30 seconds.



Publications

Chatterjee S, Kundu CN Nanoformulated quinacrine regulates NECTIN-4 domain specific functions in cervical cancer stem cells Eur. J. Pharmacol. 2020-06-27 [PMID: 32603697] (IP, Human)



Novus Biologicals USA

10730 E. Briarwood Avenue
Centennial, CO 80112
USA
Phone: 303.730.1950
Toll Free: 1.888.506.6887
Fax: 303.730.1966
nb-customerservice@bio-techne.com

Bio-Techne Canada

21 Canmotor Ave
Toronto, ON M8Z 4E6
Canada
Phone: 905.827.6400
Toll Free: 855.668.8722
Fax: 905.827.6402
canada.inquires@bio-techne.com

Bio-Techne Ltd

19 Barton Lane
Abingdon Science Park
Abingdon, OX14 3NB, United Kingdom
Phone: (44) (0) 1235 529449
Free Phone: 0800 37 34 15
Fax: (44) (0) 1235 533420
info.EMEA@bio-techne.com

General Contact Information

www.novusbio.com
Technical Support: nb-technical@bio-techne.com
Orders: nb-customerservice@bio-techne.com
General: novus@novusbio.com

Products Related to NB100-79808

NBL1-12370	Importin alpha 2/KPNA2 Overexpression Lysate
HAF008	Goat anti-Rabbit IgG Secondary Antibody [HRP]
NB7160	Goat anti-Rabbit IgG (H+L) Secondary Antibody [HRP]
NBP2-24891	Rabbit IgG Isotype Control

Limitations

This product is for research use only and is not approved for use in humans or in clinical diagnosis. Primary Antibodies are guaranteed for 1 year from date of receipt.

For more information on our 100% guarantee, please visit www.novusbio.com/guarantee

Earn gift cards/discounts by submitting a review: www.novusbio.com/reviews/submit/NB100-79808

Earn gift cards/discounts by submitting a publication using this product:
www.novusbio.com/publications

