

Product Datasheet

Importin alpha 2/KPNA2 Antibody - BSA Free NB100-79807

Unit Size: 100 ul

Store at 4C. Do not freeze.

www.novusbio.com



technical@novusbio.com

Publications: 7

Protocols, Publications, Related Products, Reviews, Research Tools and Images at:
www.novusbio.com/NB100-79807

Updated 2/21/2025 v.20.1

Earn rewards for product
reviews and publications.

Submit a publication at www.novusbio.com/publications

Submit a review at www.novusbio.com/reviews/destination/NB100-79807



NB100-79807

Importin alpha 2/KPNA2 Antibody - BSA Free

Product Information	
Unit Size	100 ul
Concentration	1.0 mg/ml
Storage	Store at 4C. Do not freeze.
Clonality	Polyclonal
Preservative	0.09% Sodium Azide
Isotype	IgG
Purity	Immunogen affinity purified
Buffer	Tris-Citrate/Phosphate (pH 7.0 - 8.0)

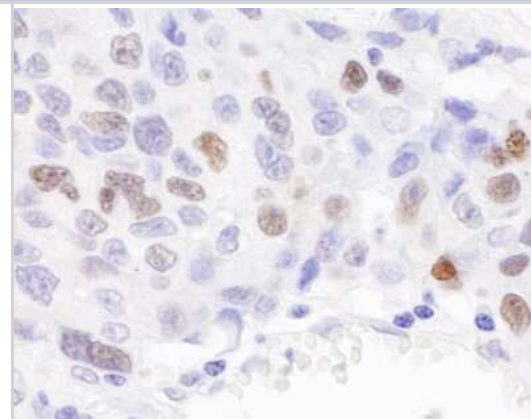
Product Description	
Host	Rabbit
Gene ID	3838
Gene Symbol	KPNA2
Species	Human
Immunogen	The immunogen recognized by this antibody maps to a region between residues 1 and 50 of human RAG cohort 1 (Karyopherin Alpha 2) using the numbering given in entry NP_002257.1 (GeneID 3838).

Product Application Details	
Applications	Western Blot, Immunohistochemistry, Immunohistochemistry-Paraffin, Immunoprecipitation
Recommended Dilutions	Western Blot 1:5000-1:15000, Immunohistochemistry 1:500 -1:2000, Immunoprecipitation 2 - 10 ug/mg lysate, Immunohistochemistry-Paraffin 1:1000
Application Notes	Use in Immunoprecipitation reported in scientific literature (PMID 25977366). Epitope retrieval with citrate buffer pH6.0 is recommended for FFPE tissue sections.

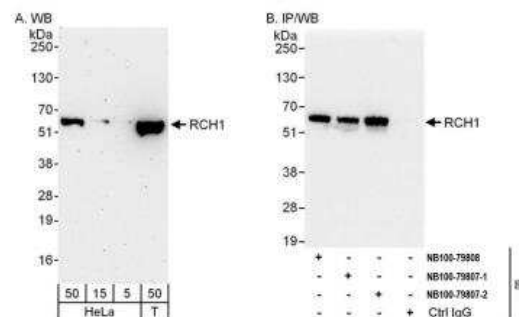


Images

Immunohistochemistry: Importin alpha 2/KPNA2 Antibody [NB100-79807] - Sample: FFPE section of human ovarian carcinoma. Antibody: Affinity purified rabbit anti- RCH1 used at a dilution of 1:1,000 (1ug/ml). Detection: DAB



Immunoprecipitation: Importin alpha 2/KPNA2 Antibody [NB100-79807] - Detection of human RCH1/Importin alpha 2/KPNA2 by western blot and immunoprecipitation. Samples: Whole cell lysate from HeLa (5, 15 and 50 ug for WB; 1 mg for IP, 20% of IP loaded) and HEK293T (T; 50 ug) cells. Antibodies: Affinity purified rabbit anti-RCH1 antibody NB100-79807 (lot 2) used for WB at 0.1 ug/ml (A) and 1 ug/ml (B) and used for IP at 3 ug/mg lysate. RCH1 was also immunoprecipitated by a previous lot of NB100-79807 (lot 1) and by rabbit anti-RCH1 antibody NB100-79808, which recognizes a downstream epitope. Detection: Chemiluminescence with exposure times of 3 minutes (A) and 3 seconds (B).



Publications

Chu TLH Aurora kinase A, regulated by HMMR and TPX2, controls cell migration and engraftment via centrosome polarization Thesis 2020-01-01 (WB, Human)

Chu TLH, Connell M, Zhou L et al. Cell Cycle-dependent Tumor Engraftment and Migration are Enabled by Aurora A. Mol. Cancer Res. 2017-10-09 [PMID: 28993511] (Human)

Yajima M, Wessel GM. Essential elements for translation: the germline factor Vasa functions broadly in somatic cells. Development. 2015-06-01 [PMID: 25977366] (WB, IP)

Jeong SA, Kim K, Lee JH et al. Akt-mediated phosphorylation increases the binding affinity of hTERT for importin alpha to promote nuclear translocation. J. Cell. Sci. 2015-05-21 [PMID: 25999477] (WB, Human)

Ishiguro K, Ando T, Maeda O et al. Cutting edge: tubulin alpha functions as an adaptor in NFAT-importin beta interaction. J Immunol 2011-03-01 [PMID: 21278340]

Jeffrey RA, Ch'ng TH, O'Dell TJ et al. Activity-dependent anchoring of importin alpha at the synapse involves regulated binding to the cytoplasmic tail of the NR1-1a subunit of the NMDA receptor. J Neurosci 2009-12-01 [PMID: 20016075]

Sato H, Maquat LE. Remodeling of the pioneer translation initiation complex involves translation and the karyopherin importin beta. Genes Dev 2009-11-01 [PMID: 19884259]



Novus Biologicals USA

10730 E. Briarwood Avenue
Centennial, CO 80112
USA
Phone: 303.730.1950
Toll Free: 1.888.506.6887
Fax: 303.730.1966
nb-customerservice@bio-techne.com

Bio-Techne Canada

21 Canmotor Ave
Toronto, ON M8Z 4E6
Canada
Phone: 905.827.6400
Toll Free: 855.668.8722
Fax: 905.827.6402
canada.inquires@bio-techne.com

Bio-Techne Ltd

19 Barton Lane
Abingdon Science Park
Abingdon, OX14 3NB, United Kingdom
Phone: (44) (0) 1235 529449
Free Phone: 0800 37 34 15
Fax: (44) (0) 1235 533420
info.EMEA@bio-techne.com

General Contact Information

www.novusbio.com
Technical Support: nb-technical@bio-techne.com
Orders: nb-customerservice@bio-techne.com
General: novus@novusbio.com

Error: Subreport could not be shown.

Limitations

This product is for research use only and is not approved for use in humans or in clinical diagnosis. Primary Antibodies are guaranteed for 1 year from date of receipt.

For more information on our 100% guarantee, please visit www.novusbio.com/guarantee

Earn gift cards/discounts by submitting a review: www.novusbio.com/reviews/submit/NB100-79807

Earn gift cards/discounts by submitting a publication using this product:
www.novusbio.com/publications

