

# Product Datasheet

## BANP Antibody - BSA Free NB100-79784

Unit Size: 100 ul

Store at 4C. Do not freeze.

[www.novusbio.com](http://www.novusbio.com)



[technical@novusbio.com](mailto:technical@novusbio.com)

Protocols, Publications, Related Products, Reviews, Research Tools and Images at:  
[www.novusbio.com/NB100-79784](http://www.novusbio.com/NB100-79784)

Updated 2/21/2025 v.20.1

Earn rewards for product  
reviews and publications.

Submit a publication at [www.novusbio.com/publications](http://www.novusbio.com/publications)

Submit a review at [www.novusbio.com/reviews/destination/NB100-79784](http://www.novusbio.com/reviews/destination/NB100-79784)



**NB100-79784**

BANP Antibody - BSA Free

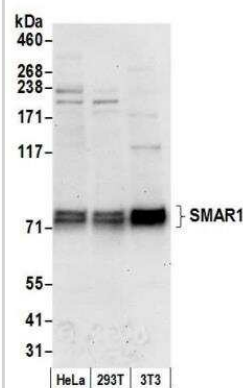
Product Information	
Unit Size	100 ul
Concentration	1.0 mg/ml
Storage	Store at 4C. Do not freeze.
Clonality	Polyclonal
Preservative	0.09% Sodium Azide
Isotype	IgG
Purity	Immunogen affinity purified
Buffer	Tris-Citrate/Phosphate (pH 7.0 - 8.0)

Product Description	
Host	Rabbit
Gene ID	54971
Gene Symbol	BANP
Species	Human, Mouse, Rat
Immunogen	The immunogen recognized by this antibody maps to a region between residue 425 and the C-terminus (residue 469) of human BTG3 associated nuclear protein using the numbering given in TrEMBL entry Q96GJ7 (GeneID 54971).

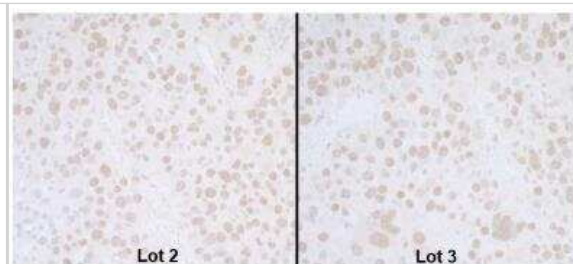
Product Application Details	
Applications	Western Blot, Immunohistochemistry, Immunohistochemistry-Paraffin, Immunoprecipitation
Recommended Dilutions	Western Blot 1:10000-1:25000, Immunohistochemistry 1:10-1:500, Immunoprecipitation 1:500-1:2500, Immunohistochemistry-Paraffin 1:10-1:500
Application Notes	Epitope retrieval with citrate buffer pH6.0 is recommended for FFPE tissues.

**Images**

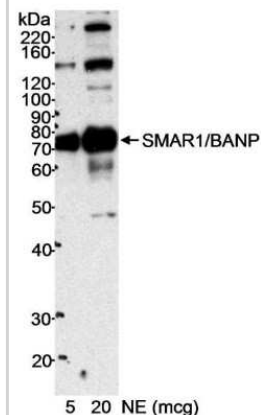
Western Blot: BANP Antibody [NB100-79784] - Detection of human and mouse SMAR1 by western blot. Samples: Whole cell lysate (50 ug) from HeLa, HEK293T, and mouse NIH 3T3 cells prepared using NETN lysis buffer. Antibody: Affinity purified rabbit anti-SMAR1 antibody NB100-79784 used for WB at 0.1 ug/ml. Detection: Chemiluminescence with an exposure time of 30 seconds.



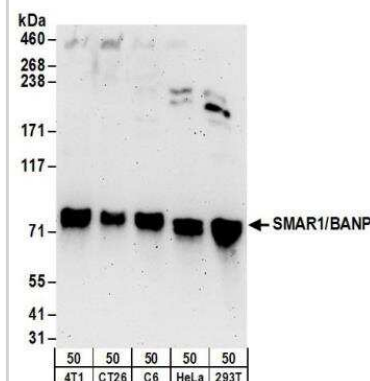
Immunohistochemistry: BANP Antibody [NB100-79784] - Detection of human SMAR1 by immunohistochemistry. Samples: FFPE sections of human lung carcinoma. Antibodies: Affinity purified rabbit anti-SMAR1 Cat. No. NB100-79784 Lot 2 used at a dilution of 1:5,000 (0.2ug/ml) (left) and Cat. No. NB100-79784 Lot3 used at a dilution of 1:5,000 (0.2ug/ml) (right). Detection: DAB



Western Blot: BANP Antibody [NB100-79784] - Nuclear extract (NE) from HeLa cells. Antibody used at 0.1 ug/ml.



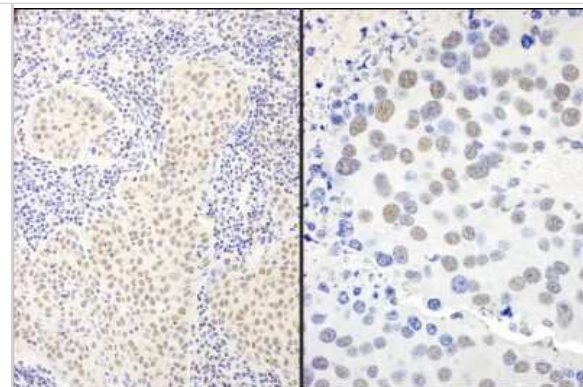
Western Blot: BANP Antibody [NB100-79784] - Detection of Human, Mouse and Rat SMAR1/BANP by Western Blot. Samples: Whole cell lysate (50 ug) from mouse 4T1, mouse CT26.WT, rat C6, HeLa, and 293T cells. Antibodies: Affinity purified rabbit anti-SMAR1/BANP antibody NB100-79784 used for WB at 0.1 ug/ml. Detection: Chemiluminescence with an exposure time of 3 minutes.



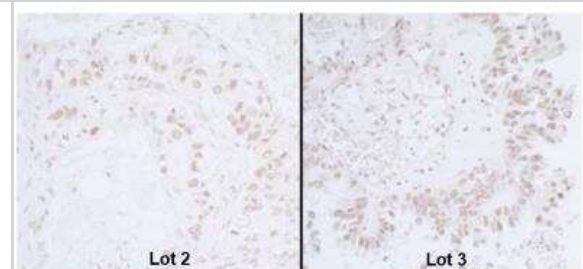
Immunohistochemistry-Paraffin: BANP Antibody [NB100-79784] - FFPE section of human breast tumor. Affinity purified rabbit anti-SMAR1/BANP used at a dilution of 1:250. Detection: DAB staining using Immunohistochemistry Accessory Kit



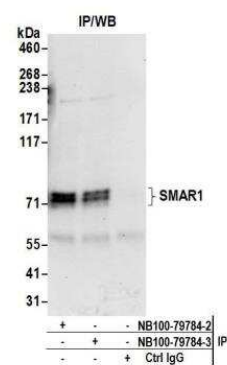
Immunohistochemistry: BANP Antibody [NB100-79784] - Sample: FFPE sections of human lung carcinoma (left) and mouse renal cell carcinoma (right). Antibody: Affinity purified rabbit anti-fs18 SMAR1 fs20 used at a dilution of 1:5,000 (0.2ug/ml). Detection: DAB



Immunohistochemistry: BANP Antibody [NB100-79784] - Detection of mouse SMAR1 by immunohistochemistry. Samples: FFPE sections of mouse renal cell carcinoma. Antibodies: Affinity purified rabbit anti-SMAR1 Cat. No. NB100-79784 Lot 2 used at a dilution of 1:5,000 (0.2ug/ml) (left) and Cat. No. NB100-79784 Lot3 used at a dilution of 1:5,000 (0.2ug/ml) (right). Detection: DAB



Immunoprecipitation: BANP Antibody [NB100-79784] - Detection of human SMAR1 by western blot of immunoprecipitates. Samples: Whole cell lysate (0.5 or 1.0 mg per IP reaction; 20% of IP loaded) from HeLa cells prepared using NETN lysis buffer. Antibodies: Affinity purified rabbit anti-SMAR1 antibody NB100-79784 (lot NB100-79784-3) used for IP at 6 ug per reaction. SMAR1 was also immunoprecipitated by a previous lot of this antibody (lot NB100-79784-2). For blotting immunoprecipitated SMAR1, NB100-79784 was used at 1 ug/ml. Detection: Chemiluminescence with an exposure time of 30 seconds.





### **Novus Biologicals USA**

10730 E. Briarwood Avenue  
Centennial, CO 80112  
USA  
Phone: 303.730.1950  
Toll Free: 1.888.506.6887  
Fax: 303.730.1966  
nb-customerservice@bio-techne.com

### **Bio-Techne Canada**

21 Canmotor Ave  
Toronto, ON M8Z 4E6  
Canada  
Phone: 905.827.6400  
Toll Free: 855.668.8722  
Fax: 905.827.6402  
canada.inquires@bio-techne.com

### **Bio-Techne Ltd**

19 Barton Lane  
Abingdon Science Park  
Abingdon, OX14 3NB, United Kingdom  
Phone: (44) (0) 1235 529449  
Free Phone: 0800 37 34 15  
Fax: (44) (0) 1235 533420  
info.EMEA@bio-techne.com

### **General Contact Information**

www.novusbio.com  
Technical Support: nb-technical@bio-techne.com  
Orders: nb-customerservice@bio-techne.com  
General: novus@novusbio.com

### **Products Related to NB100-79784**

---

NBL1-07914	BANP Overexpression Lysate
HAF008	Goat anti-Rabbit IgG Secondary Antibody [HRP]
NB7160	Goat anti-Rabbit IgG (H+L) Secondary Antibody [HRP]
NBP2-24891	Rabbit IgG Isotype Control

---

### **Limitations**

This product is for research use only and is not approved for use in humans or in clinical diagnosis. Primary Antibodies are guaranteed for 1 year from date of receipt.

For more information on our 100% guarantee, please visit [www.novusbio.com/guarantee](http://www.novusbio.com/guarantee)

Earn gift cards/discounts by submitting a review: [www.novusbio.com/reviews/submit/NB100-79784](http://www.novusbio.com/reviews/submit/NB100-79784)

Earn gift cards/discounts by submitting a publication using this product:  
[www.novusbio.com/publications](http://www.novusbio.com/publications)

