

# Product Datasheet

## CYLD Antibody - Azide and BSA Free NB100-78600

Unit Size: 100 ul

Store at 4C short term. Aliquot and store at -20C long term. Avoid freeze-thaw cycles.

[www.novusbio.com](http://www.novusbio.com)



[technical@novusbio.com](mailto:technical@novusbio.com)

Protocols, Publications, Related Products, Reviews, Research Tools and Images at:  
[www.novusbio.com/NB100-78600](http://www.novusbio.com/NB100-78600)

Updated 9/9/2025 v.20.1

Earn rewards for product  
reviews and publications.

Submit a publication at [www.novusbio.com/publications](http://www.novusbio.com/publications)

Submit a review at [www.novusbio.com/reviews/destination/NB100-78600](http://www.novusbio.com/reviews/destination/NB100-78600)



**NB100-78600**

CYLD Antibody - Azide and BSA Free

| Product Information     |  |
|-------------------------|--|
| Unit Size               | 100 ul   |
| Concentration           | Concentrations vary lot to lot. See vial label for concentration. If unlisted please contact technical services. |
| Storage                 | Store at 4C short term. Aliquot and store at -20C long term. Avoid freeze-thaw cycles.                           |
| Clonality               | Polyclonal   |
| Preservative            | No Preservative  |
| Isotype                 | IgG  |
| Purity                  | Antigen Affinity-purified  |
| Buffer                  | PBS (pH 7), 20% Glycerol   |
| Target Molecular Weight | 107 kDa  |

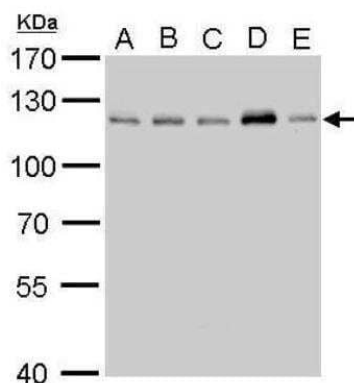
| Product Description |   |
|---------------------|---|
| Description         | Novus Biologicals Rabbit CYLD Antibody - Azide and BSA Free (NB100-78600) is a polyclonal antibody validated for use in IHC, WB and ICC/IF. All Novus Biologicals antibodies are covered by our 100% guarantee. |
| Host                | Rabbit  |
| Gene ID             | 1540  |
| Gene Symbol         | CYLD  |
| Species             | Human, Mouse, Rat   |
| Immunogen           | Carrier-protein conjugated synthetic peptide encompassing a sequence within the C-terminus region of human CYLD. The exact sequence is proprietary.   |

| Product Application Details |  |
|-----------------------------|--|
| Applications                | Western Blot, Immunohistochemistry-Paraffin, Immunocytochemistry/ Immunofluorescence, Immunohistochemistry   |
| Recommended Dilutions       | Western Blot 1:500-1:3000, Immunohistochemistry 1:100-1:1000, Immunocytochemistry/ Immunofluorescence 1:100-1:1000, Immunohistochemistry-Paraffin 1:100-1:1000 |

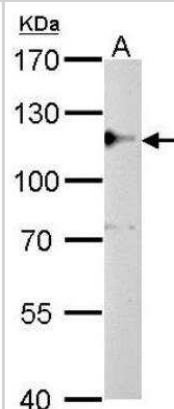


## Images

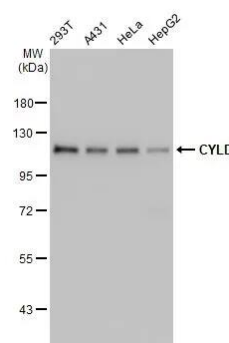
Western Blot: CYLD Antibody [NB100-78600] - A. C8D30 whole cell lysate/extract. B. NIH-3T3 whole cell lysate/extract. C. BCL-1 whole cell lysate/extract. D. Raw264.7 whole cell lysate/extract. E. C2C12 whole cell lysate/extract.



Western Blot: CYLD Antibody [NB100-78600] - A. 50 ug rat brain lysate/extract 7.5 % SDS-PAGE CYLD antibody dilution: 1:500.



Western Blot: CYLD Antibody [NB100-78600] - Various whole cell extracts (30 ug) were separated by 7.5% SDS-PAGE, and the membrane was blotted with CYLD antibody (NB100-78600) diluted at 1:1000. The HRP-conjugated anti-rabbit IgG antibody was used to detect the primary antibody.





### **Novus Biologicals USA**

10730 E. Briarwood Avenue  
Centennial, CO 80112  
USA  
Phone: 303.730.1950  
Toll Free: 1.888.506.6887  
Fax: 303.730.1966  
nb-customerservice@bio-techne.com

### **Bio-Techne Canada**

21 Canmotor Ave  
Toronto, ON M8Z 4E6  
Canada  
Phone: 905.827.6400  
Toll Free: 855.668.8722  
Fax: 905.827.6402  
canada.inquires@bio-techne.com

### **Bio-Techne Ltd**

19 Barton Lane  
Abingdon Science Park  
Abingdon, OX14 3NB, United Kingdom  
Phone: (44) (0) 1235 529449  
Free Phone: 0800 37 34 15  
Fax: (44) (0) 1235 533420  
info.EMEA@bio-techne.com

### **General Contact Information**

www.novusbio.com  
Technical Support: nb-technical@bio-techne.com  
Orders: nb-customerservice@bio-techne.com  
General: novus@novusbio.com

### **Products Related to NB100-78600**

---

|                |   |
|----------------|---|
| HAF008         | Goat anti-Rabbit IgG Secondary Antibody [HRP]       |
| NB7160         | Goat anti-Rabbit IgG (H+L) Secondary Antibody [HRP] |
| NBP2-24891     | Rabbit IgG Isotype Control                          |
| NB100-56461PEP | CYLD Antibody Blocking Peptide                      |

---

### **Limitations**

This product is for research use only and is not approved for use in humans or in clinical diagnosis. Primary Antibodies are guaranteed for 1 year from date of receipt.

For more information on our 100% guarantee, please visit [www.novusbio.com/guarantee](http://www.novusbio.com/guarantee)

Earn gift cards/discounts by submitting a review: [www.novusbio.com/reviews/submit/NB100-78600](http://www.novusbio.com/reviews/submit/NB100-78600)

Earn gift cards/discounts by submitting a publication using this product:  
[www.novusbio.com/publications](http://www.novusbio.com/publications)

