

# Product Datasheet

## PSGL-1/CD162 Antibody (HECA-452) - BSA Free NB100-78039

Unit Size: 0.1 ml

Store at 4C short term. Aliquot and store at -20C long term. Avoid freeze-thaw cycles.

[www.novusbio.com](http://www.novusbio.com)



[technical@novusbio.com](mailto:technical@novusbio.com)

**Reviews: 1 Publications: 12**

Protocols, Publications, Related Products, Reviews, Research Tools and Images at:  
[www.novusbio.com/NB100-78039](http://www.novusbio.com/NB100-78039)

Updated 9/9/2025 v.20.1

**Earn rewards for product  
reviews and publications.**

Submit a publication at [www.novusbio.com/publications](http://www.novusbio.com/publications)

Submit a review at [www.novusbio.com/reviews/destination/NB100-78039](http://www.novusbio.com/reviews/destination/NB100-78039)



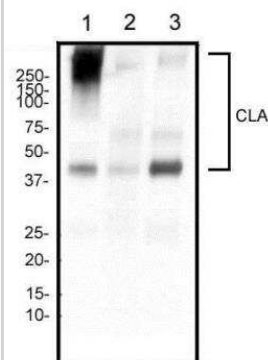
**NB100-78039****PSGL-1/CD162 Antibody (HECA-452) - BSA Free**

<b>Product Information</b>	
<b>Unit Size</b>	0.1 ml
<b>Concentration</b>	1.0 mg/ml
<b>Storage</b>	Store at 4C short term. Aliquot and store at -20C long term. Avoid freeze-thaw cycles.
<b>Clonality</b>	Monoclonal
<b>Clone</b>	HECA-452
<b>Preservative</b>	0.02% Sodium Azide
<b>Isotype</b>	IgM Kappa
<b>Purity</b>	IgM purified
<b>Buffer</b>	PBS
<b>Product Description</b>	
<b>Description</b>	Novus Biologicals Rat PSGL-1/CD162 Antibody (HECA-452) - BSA Free (NB100-78039) is a monoclonal antibody validated for use in IHC, WB, ELISA, Flow and ICC/IF. Anti-PSGL-1/CD162 Antibody: Cited in 12 publications. All Novus Biologicals antibodies are covered by our 100% guarantee.
<b>Host</b>	Rat
<b>Gene ID</b>	6404
<b>Gene Symbol</b>	SELPLG
<b>Species</b>	Human, Mouse
<b>Specificity/Sensitivity</b>	CLA antibody clone HECA-452 is known to recognize the cutaneous lymphocyte-associated antigen / CLA which is a specialized glycosylated form of P-selectin glycoprotein ligand-1/PSGL-1. Besides lymphocytes, this clone has been shown to react with normal endometrium as well as breast cancer tissues (PMID 19625313 and 22970241).
<b>Immunogen</b>	Human tonsil stroma
<b>Product Application Details</b>	
<b>Applications</b>	Western Blot, Immunohistochemistry-Paraffin, ELISA, Flow Cytometry, Flow (Cell Surface), Immunocytochemistry/ Immunofluorescence, Immunohistochemistry, Immunohistochemistry-Frozen, CyTOF-ready
<b>Recommended Dilutions</b>	Western Blot 2 ug/ml, Flow Cytometry &lt; = 2 ug/10 <sup>6</sup> cells in 100 ul, ELISA, Immunohistochemistry 1:10-1:500, Immunocytochemistry/ Immunofluorescence reported in scientific literature (PMID 1693467), Immunohistochemistry-Paraffin 1:10-1:500, Immunohistochemistry-Frozen 1:10-1:500, Flow (Cell Surface), CyTOF-ready

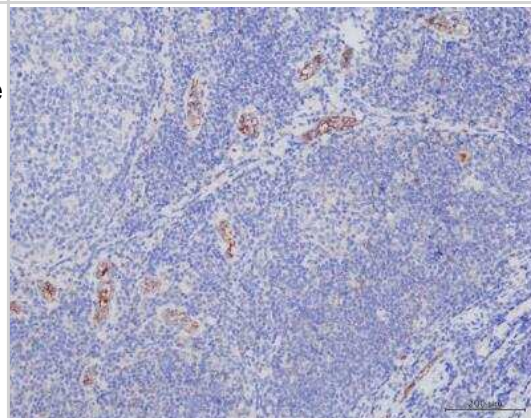


## Images

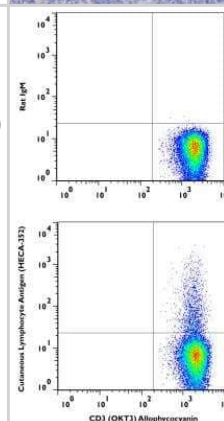
**Western Blot:** PSGL-1/CD162 Antibody (HECA-452) [NB100-78039] - Cutaneous Lymphocyte Antigen (CLA) Antibody (HECA-452) [NB100-78039] - Analysis of human tonsil (1), human spleen (2), and human lymph node (3) tissue using CD162 antibody at a concentration of 2 ug/ml.



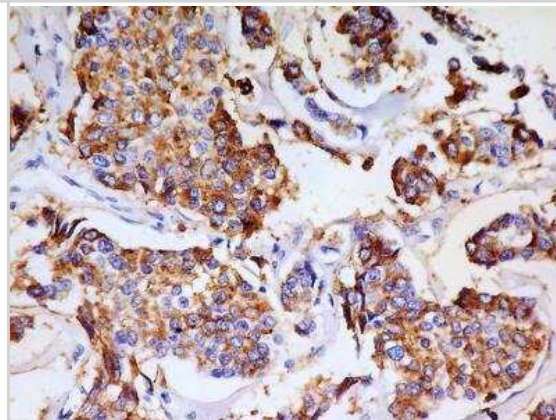
**Immunohistochemistry-Paraffin:** PSGL-1/CD162 Antibody (HECA-452) [NB100-78039] - Human tonsil tissue stained with PSGL-1/CD162 Antibody (HECA-452) at 5ug/mL, and Leica Refine DAB kit. IHC-P image submitted by a verified customer review.



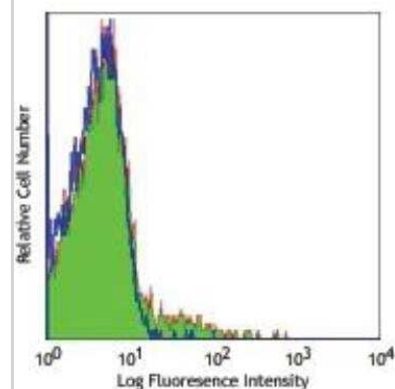
**Flow (Cell Surface):** PSGL-1/CD162 Antibody (HECA-452) [NB100-78039] - Cutaneous Lymphocyte Antigen (CLA) Antibody (HECA-452) [NB100-78039] - A cell surface stain was performed on CD3+ hPBMCs with Cutaneous Lymphocyte Antigen (CLA) antibody (HECA-452) NB100-78039 and a matched isotype control NBP2-31379. Cells were incubated in an antibody dilution of 1 ug/mL for 20 minutes at room temperature, followed by mouse F(ab)2 IgG (H+L) APC-conjugated secondary antibody [F0101B, R&D Systems]. A co-stain was performed using CD3 antibody NBP2-25186APC.



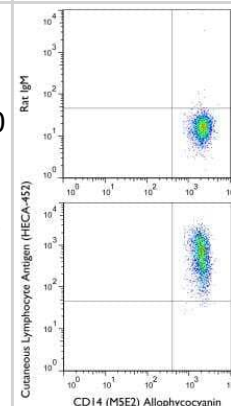
**Immunohistochemistry-Paraffin:** PSGL-1/CD162 Antibody (HECA-452) [NB100-78039] - Cutaneous Lymphocyte Antigen (CLA) Antibody (HECA-452) [NB100-78039] - IHC analysis of formalin-fixed paraffin-embedded tissue section of human breast adenocarcinoma using CLA antibody (clone HECA-452) at 5 ug/ml concentration. The antibody generated a membrane-cytoplasmic staining in the cancerous cells of breast adenocarcinoma. Note:- Besides lymphocytes, CLA has been shown to be present on cells of normal endometrium as well as breast cancer tissues (PMID 19625313 and 22970241).



Flow Cytometry: PSGL-1/CD162 Antibody (HECA-452) [NB100-78039] - Cutaneous Lymphocyte Antigen (CLA) Antibody (HECA-452) [NB100-78039] - Human peripheral blood lymphocytes stained with purified HECA-452, followed by anti-mouse IgG FITC



Flow (Cell Surface): PSGL-1/CD162 Antibody (HECA-452) [NB100-78039] - Cutaneous Lymphocyte Antigen (CLA) Antibody (HECA-452) [NB100-78039] - A cell surface stain was performed on CD14+ hPBMCs with Cutaneous Lymphocyte Antigen (CLA) antibody (HECA-452) NB100-78039 and a matched isotype control NBP2-31379. Cells were incubated in an antibody dilution of 1 ug/mL for 20 minutes at room temperature, followed by rat-Dylight 488 conjugated secondary antibody. A co-stain was performed using CD14 antibody NB100-77758AF488.



## Publications

- Li GX, Jiang XH, Zang JN et al. B-cell receptor associated protein 31 deficiency decreases the expression of adhesion molecule CD11b/CD18 and PSGL-1 in neutrophils to ameliorate acute lung injury *The International Journal of Biochemistry & Cell Biology* 2022-11-01 [PMID: 36210579] (Flow Cytometry, Immunohistochemistry, Western Blot)
- Qi Xu, Ming Shi, Lu Ding, Yu Xia, Liang Luo, Xiaofang Lu, Xiaoying Zhang, David Y. B. Deng High expression of P-selectin induces neutrophil extracellular traps via the PSGL-1/Syk/Ca<sup>2+</sup>/PAD4 pathway to exacerbate acute pancreatitis *Frontiers in Immunology* 2023-09-28 [PMID: 37841279]
- Shi H, Jiang C, Yao H et al. CD44 fucosylation on bone marrow-derived mesenchymal stem cells enhances homing and promotes enteric nervous system remodeling in diabetic mice *Cell & Bioscience* 2021-12-01 [PMID: 34193268] (Mouse)
- Yeini E, Ofek P, Pozzi S et al. P-selectin axis plays a key role in microglia immunophenotype and glioblastoma progression *Nature communications* 2021-03-26 [PMID: 33771989] (FLOW)
- Yamanaka K, Dimitroff CJ, Fuhlbrigge RC et al. Vitamins A and D are potent inhibitors of cutaneous lymphocyte-associated antigen expression. *J Allergy Clin Immunol.* 2008-01-01 [PMID: 17910894] (WB)
- Picker LJ, Michie SA, Rott LS, Butcher EC. A unique phenotype of skin-associated lymphocytes in humans. Preferential expression of the HECA-452 epitope by benign and malignant T cells at cutaneous sites. *Am J Pathol.* 1990-05-01 [PMID: 1693467] (IF/IHC, WB, FLOW)
- Walcheck B, Leppanen A, Cummings R et al. The monoclonal antibody CHO-131 binds to a core 2 O-glycan terminated with sialyl-Lewis x, which is a functional glycan ligand for P-selectin. *Blood.* 2002-06-01 [PMID: 12010808] (FLOW, ELISA)
- Borges E, Pendl G, Eytner R et al. The binding of T cell-expressed P-selectin glycoprotein ligand-1 to E- and P-selectin is differentially regulated. *J Biol Chem.* 1997-11-01 [PMID: 9353350]
- Picker LJ, Kishimoto TK, Smith CW et al. ELAM-1 is an adhesion molecule for skin-homing T cells. *Nature.* 1991-02-01 [PMID: 1705666]
- Berg EL, Yoshino T, Rott LS et al. The cutaneous lymphocyte antigen is a skin lymphocyte homing receptor for the vascular lectin endothelial cell-leukocyte adhesion molecule 1. *J Exp Med.* 1991-12-01 [PMID: 1720810]
- Duijvestijn AM, Horst E, Pals ST et al. High endothelial differentiation in human lymphoid and inflammatory tissues defined by monoclonal antibody HECA-452. *Am J Pathol.* 1988-01-01 [PMID: 3276207]
- Kim CH, Cheong KA, Park CD, Lee AY. Therapeutic Effects of Combination Using Glucosamine Plus Tacrolimus (FK-506) on The Development of Atopic Dermatitis-Like Skin Lesions in NC/Nga Mice. *Scand J Immunol*;75(5):471-8. 2012-05-01 [PMID: 22023698] (IF/IHC, Mouse)



### **Novus Biologicals USA**

10730 E. Briarwood Avenue  
Centennial, CO 80112  
USA  
Phone: 303.730.1950  
Toll Free: 1.888.506.6887  
Fax: 303.730.1966  
nb-customerservice@bio-techne.com

### **Bio-Techne Canada**

21 Canmotor Ave  
Toronto, ON M8Z 4E6  
Canada  
Phone: 905.827.6400  
Toll Free: 855.668.8722  
Fax: 905.827.6402  
canada.inquires@bio-techne.com

### **Bio-Techne Ltd**

19 Barton Lane  
Abingdon Science Park  
Abingdon, OX14 3NB, United Kingdom  
Phone: (44) (0) 1235 529449  
Free Phone: 0800 37 34 15  
Fax: (44) (0) 1235 533420  
info.EMEA@bio-techne.com

### **General Contact Information**

www.novusbio.com  
Technical Support: nb-technical@bio-techne.com  
Orders: nb-customerservice@bio-techne.com  
General: novus@novusbio.com

### **Products Related to NB100-78039**

---

NBL1-15720	SR-BI Overexpression Lysate
HAF005	Goat anti-Rat IgG Secondary Antibody [HRP]
F0105B	Goat anti-Rat IgG Secondary Antibody [Phycoerythrin]
NBP3-16974PEP	PSGL-1/CD162 Recombinant Protein Antigen

---

### **Limitations**

This product is for research use only and is not approved for use in humans or in clinical diagnosis. Primary Antibodies are guaranteed for 1 year from date of receipt.

For more information on our 100% guarantee, please visit [www.novusbio.com/guarantee](http://www.novusbio.com/guarantee)

Earn gift cards/discounts by submitting a review: [www.novusbio.com/reviews/submit/NB100-78039](http://www.novusbio.com/reviews/submit/NB100-78039)

Earn gift cards/discounts by submitting a publication using this product:  
[www.novusbio.com/publications](http://www.novusbio.com/publications)

