

Product Datasheet

HLA-DR Antibody (L243) [PE]

NB100-77855PE

Unit Size: 0.1 ml

Store at 4C in the dark.

www.novusbio.com



technical@novusbio.com

Protocols, Publications, Related Products, Reviews, Research Tools and Images at:
www.novusbio.com/NB100-77855PE

Updated 10/23/2024 v.20.1

Earn rewards for product reviews and publications.

Submit a publication at www.novusbio.com/publications

Submit a review at www.novusbio.com/reviews/destination/NB100-77855PE



NB100-77855PE

HLA-DR Antibody (L243) [PE]

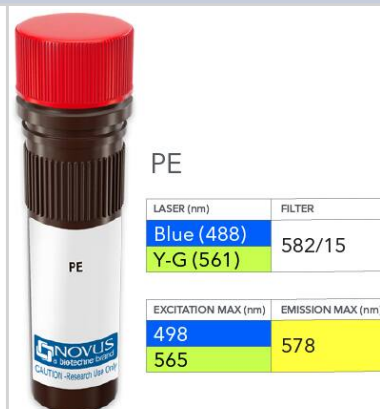
Product Information	
Unit Size	0.1 ml
Concentration	Please see the vial label for concentration. If unlisted please contact technical services.
Storage	Store at 4C in the dark.
Clonality	Monoclonal
Clone	L243
Preservative	0.05% Sodium Azide
Isotype	IgG2a Kappa
Conjugate	PE
Purity	Protein A purified
Buffer	PBS

Product Description	
Host	Mouse
Gene ID	3122
Gene Symbol	HLA-DRA
Species	Human, Canine, Baboon, Primate
Reactivity Notes	Predicted cross-reactivity with Chimpanzee, Baboon, Cynomolgus, Rhesus, Marmoset, Tamarin, Squirrel Monkey
Immunogen	Human lymphoblastoid cell line (RPMI 8866).

Product Application Details	
Applications	Western Blot, ELISA, Electron Microscopy, Flow Cytometry, Flow (Cell Surface), Functional, Immunocytochemistry/ Immunofluorescence, Immunohistochemistry, Immunohistochemistry-Frozen, Immunohistochemistry-Paraffin, In vitro assay, Immunoprecipitation, Block/Neutralize, CyTOF-ready, Dual RNAscope ISH-IHC
Recommended Dilutions	Western Blot, Flow Cytometry, ELISA, Immunohistochemistry, Immunocytochemistry/ Immunofluorescence, Immunoprecipitation, Immunohistochemistry-Paraffin, Immunohistochemistry-Frozen, Functional, In vitro assay, Electron Microscopy, Flow (Cell Surface), CyTOF-ready, Block/Neutralize, Dual RNAscope ISH-IHC
Application Notes	Optimal dilution of this antibody should be experimentally determined.

Images

HLA-DR Antibody (L243) [PE] [NB100-77855PE] - Vial of PE conjugated antibody. PE has two excitation maxima, 498 nm excited by the Blue laser (488 nm) and 565 nm excited by the Yellow-Green laser (561 nm). Both result in emission at 578 nm.





Novus Biologicals USA

10730 E. Briarwood Avenue
Centennial, CO 80112
USA
Phone: 303.730.1950
Toll Free: 1.888.506.6887
Fax: 303.730.1966
nb-customerservice@bio-techne.com

Bio-Techne Canada

21 Canmotor Ave
Toronto, ON M8Z 4E6
Canada
Phone: 905.827.6400
Toll Free: 855.668.8722
Fax: 905.827.6402
canada.inquires@bio-techne.com

Bio-Techne Ltd

19 Barton Lane
Abingdon Science Park
Abingdon, OX14 3NB, United Kingdom
Phone: (44) (0) 1235 529449
Free Phone: 0800 37 34 15
Fax: (44) (0) 1235 533420
info.EMEA@bio-techne.com

General Contact Information

www.novusbio.com
Technical Support: nb-technical@bio-techne.com
Orders: nb-customerservice@bio-techne.com
General: novus@novusbio.com

Products Related to NB100-77855PE

NBP1-96981PE	Mouse IgG2a Kappa Isotype Control (M2AK) [PE]
NB100-77855V	HLA-DR Antibody (L243) [DyLight 405]
210-TA-005	TNF-alpha [Unconjugated]
M6000B-1	IL-6 [HRP]

Limitations

This product is for research use only and is not approved for use in humans or in clinical diagnosis. Primary Antibodies are guaranteed for 1 year from date of receipt.

For more information on our 100% guarantee, please visit www.novusbio.com/guarantee

Earn gift cards/discounts by submitting a review: www.novusbio.com/reviews/submit/NB100-77855PE

Earn gift cards/discounts by submitting a publication using this product:
www.novusbio.com/publications

