

Product Datasheet

CHIP/STUB1 Antibody - BSA Free NB100-77316

Unit Size: 100 ul

Store at 4C. Do not freeze.

www.novusbio.com



technical@novusbio.com

Protocols, Publications, Related Products, Reviews, Research Tools and Images at:
www.novusbio.com/NB100-77316

Updated 2/24/2025 v.20.1

Earn rewards for product
reviews and publications.

Submit a publication at www.novusbio.com/publications

Submit a review at www.novusbio.com/reviews/destination/NB100-77316



NB100-77316

CHIP/STUB1 Antibody - BSA Free

Product Information

Unit Size	100 ul
Concentration	1.0 mg/ml
Storage	Store at 4C. Do not freeze.
Clonality	Polyclonal
Preservative	0.09% Sodium Azide
Isotype	IgG
Purity	Immunogen affinity purified
Buffer	Tris-Citrate/Phosphate (pH 7.0 - 8.0)

Product Description

Host	Rabbit
Gene ID	10273
Gene Symbol	STUB1
Species	Human
Immunogen	The immunogen recognized by this antibody maps to a region between residue 253 and 303 of human STIP1 homology and U-box containing protein 1 (carboxy terminus of Hsp70-interacting protein) using the numbering given in entry NP_005852.2 (GeneID 10273).

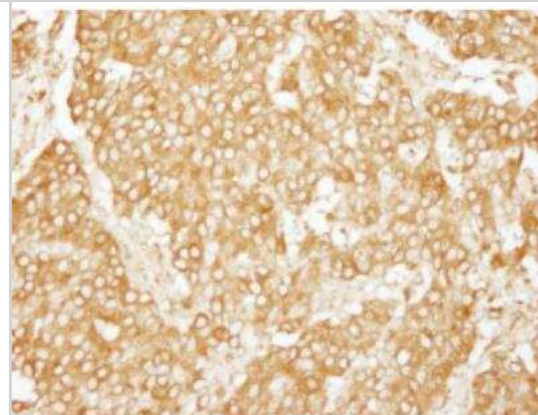
Product Application Details

Applications	Immunohistochemistry, Immunohistochemistry-Paraffin, Immunoprecipitation, Western Blot (Negative)
Recommended Dilutions	Immunohistochemistry 1:1000-1:5000, Immunoprecipitation 2-5 ug/mg lysate, Immunohistochemistry-Paraffin 1:1000-1:5000, Western Blot (Negative)
Application Notes	Epitope retrieval with citrate buffer pH 6.0 is recommended for FFPE tissue sections.



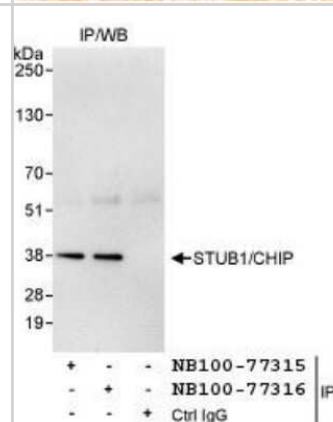
Images

Immunohistochemistry-Paraffin: CHIP/STUB1 Antibody [NB100-77316] - Section of human breast carcinoma. Antibody: Affinity purified rabbit antiSTUB1/CHIP used at a dilution of 1:1,000 (1ug/ml). Detection: DAB



Immunoprecipitation: CHIP/STUB1 Antibody [NB100-77316] - Detection of Human STUB1/CHIP by Western Blot of Immunoprecipitates.

Samples: Whole cell lysate (1 mg for IP, 20% of IP loaded) from HeLa cells. Antibodies: Affinity purified rabbit anti-STUB1/CHIP antibody NB100-77316 used for IP at 3 mcg/mg lysate. STUB1/CHIP was also immunoprecipitated by rabbit anti-STUB1/CHIP antibody NB100-77315, which recognizes an upstream epitope. Detection: Chemiluminescence with an exposure time of 30 seconds.





Novus Biologicals USA

10730 E. Briarwood Avenue
Centennial, CO 80112
USA
Phone: 303.730.1950
Toll Free: 1.888.506.6887
Fax: 303.730.1966
nb-customerservice@bio-techne.com

Bio-Techne Canada

21 Canmotor Ave
Toronto, ON M8Z 4E6
Canada
Phone: 905.827.6400
Toll Free: 855.668.8722
Fax: 905.827.6402
canada.inquires@bio-techne.com

Bio-Techne Ltd

19 Barton Lane
Abingdon Science Park
Abingdon, OX14 3NB, United Kingdom
Phone: (44) (0) 1235 529449
Free Phone: 0800 37 34 15
Fax: (44) (0) 1235 533420
info.EMEA@bio-techne.com

General Contact Information

www.novusbio.com
Technical Support: nb-technical@bio-techne.com
Orders: nb-customerservice@bio-techne.com
General: novus@novusbio.com

Limitations

This product is for research use only and is not approved for use in humans or in clinical diagnosis. Primary Antibodies are guaranteed for 1 year from date of receipt.

For more information on our 100% guarantee, please visit www.novusbio.com/guarantee

Earn gift cards/discounts by submitting a review: www.novusbio.com/reviews/submit/NB100-77316

Earn gift cards/discounts by submitting a publication using this product:
www.novusbio.com/publications

