

Product Datasheet

RB1CC1 Antibody NB100-77279

Unit Size: 0.1 ml

Store at 4C. Do not freeze.

www.novusbio.com



technical@novusbio.com

Publications: 3

Protocols, Publications, Related Products, Reviews, Research Tools and Images at:
www.novusbio.com/NB100-77279

Updated 10/23/2024 v.20.1

Earn rewards for product
reviews and publications.

Submit a publication at www.novusbio.com/publications

Submit a review at www.novusbio.com/reviews/destination/NB100-77279



NB100-77279

RB1CC1 Antibody

Product Information	
Unit Size	0.1 ml
Concentration	0.2 mg/ml
Storage	Store at 4C. Do not freeze.
Clonality	Polyclonal
Preservative	0.09% Sodium Azide
Isotype	IgG
Purity	Immunogen affinity purified
Buffer	TBS and 0.1% BSA
Target Molecular Weight	183 kDa

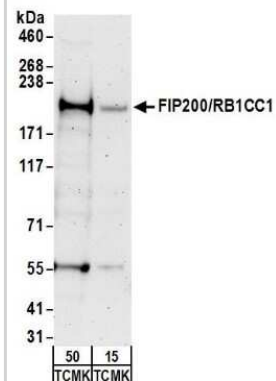
Product Description	
Host	Rabbit
Gene ID	9821
Gene Symbol	RB1CC1
Species	Human, Mouse
Immunogen	The immunogen recognized by this antibody maps to a region between residue 1544 and 1594 of human 200 kDa FAK family kinase-interacting protein (RB1-inducible coiled-coil 1) using the numbering given in entry NP_055596.2 (GeneID 9821).

Product Application Details	
Applications	Western Blot, Immunoprecipitation
Recommended Dilutions	Western Blot 1:2000-1:10000, Immunoprecipitation 2-5 ug/mg lysate

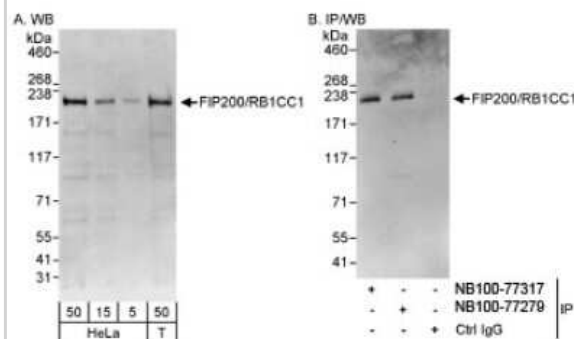


Images

Western Blot: RB1CC1 Antibody [NB100-77279] - Detection of Mouse FIP200/RB1CC1 by Western Blot. Samples: Whole cell lysate from TCMK-1 (15 and 50 ug) cells. Antibodies: Affinity purified rabbit anti-FIP200/RB1CC1 antibody NB100-77279 used for WB at 0.2 ug/ml. Detection: Chemiluminescence with an exposure time of 3 minutes.



Western Blot: RB1CC1 Antibody [NB100-77279] - Detection of Human FIP200/RB1CC1 on HeLa whole cell lysate using NB100-77279. FIP200/RB1CC1 was also immunoprecipitated by rabbit anti-FIP200/RB1CC1 antibody NB100-77317.



Publications

Thomas HE, Zhang Y, Stefely JA et al. Mitochondrial Complex I Activity Is Required for Maximal Autophagy Cell Rep 2018-08-28 [PMID: 30157433] (WB, Human)

Brennan LA, Kantorow WL, Chauss D et al. Spatial expression patterns of autophagy genes in the eye lens and induction of autophagy in lens cells. Mol Vis 2012-01-01 [PMID: 22815631]

Hwa Jung et al. Mol.Biol.Cell 20 (7):1992-2003. 2009-01-01 [PMID: 19225151]



Novus Biologicals USA

10730 E. Briarwood Avenue
Centennial, CO 80112
USA
Phone: 303.730.1950
Toll Free: 1.888.506.6887
Fax: 303.730.1966
nb-customerservice@bio-techne.com

Bio-Techne Canada

21 Canmotor Ave
Toronto, ON M8Z 4E6
Canada
Phone: 905.827.6400
Toll Free: 855.668.8722
Fax: 905.827.6402
canada.inquires@bio-techne.com

Bio-Techne Ltd

19 Barton Lane
Abingdon Science Park
Abingdon, OX14 3NB, United Kingdom
Phone: (44) (0) 1235 529449
Free Phone: 0800 37 34 15
Fax: (44) (0) 1235 533420
info.EMEA@bio-techne.com

General Contact Information

www.novusbio.com
Technical Support: nb-technical@bio-techne.com
Orders: nb-customerservice@bio-techne.com
General: novus@novusbio.com

Products Related to NB100-77279

NBL1-15184	RB1CC1 Overexpression Lysate
HAF008	Goat anti-Rabbit IgG Secondary Antibody [HRP]
NB7160	Goat anti-Rabbit IgG (H+L) Secondary Antibody [HRP]
NBP2-24891	Rabbit IgG Isotype Control

Limitations

This product is for research use only and is not approved for use in humans or in clinical diagnosis. Primary Antibodies are guaranteed for 1 year from date of receipt.

For more information on our 100% guarantee, please visit www.novusbio.com/guarantee

Earn gift cards/discounts by submitting a review: www.novusbio.com/reviews/submit/NB100-77279

Earn gift cards/discounts by submitting a publication using this product:
www.novusbio.com/publications

